

eelaf  
RESIDENCE  
— NEW CAIRO —

---

إيلاف



**embracing  
people and nature**



ایلاف



THE  
**eelaf**  
STORY

ایلاف



WHERE DREAMS THRIVE,  
MOMENTS ARE CHERISHED,  
AND CONNECTIONS FLOURISH

---



THE  
**eelaf**  
STORY

FOR THE MILLENNIALS -  
THE VIBRANT AND DYNAMIC GENERATION SHAPING  
THE WORLD TODAY.

Once upon a time in the world of real estate development, there was a newborn project that had a unique perspective that believed there was something more important than just the architecture, landscape, or facilities of a project. An understanding that what truly made a place special was its people; the familiarity, intimacy, and domesticity it provided to its residents.

Eelaf, derived from the Arabic word meaning "familiarity," had a different approach when it came to identifying their projects. They didn't focus on the usual norms; instead, they looked at the characteristics of the people who would be calling these places home. It was all about the who, rather than the how.

Within Eelaf, there was a special focus on a particular group of people known as Alfeya. These are the millennials - the vibrant and dynamic generation shaping the world today. Eelaf recognized that the key to capturing their hearts was to create spaces that catered to their unique characteristics, allowing them to build comfort zones and emotional bonds.

From the very beginning, Eelaf set out to weave a narrative of familiarity, becoming a project of havens of warmth and connection. It was not just about the physical structure; it was about fostering a sense of belonging and understanding with aspirations, dreams and values. Every detail, from room layouts to communal areas, was meticulously designed to encourage interaction and create a strong sense of community.

Eelaf offers an experience where architecture and facilities become charming backdrops to the beautiful stories of its occupants.

**WELCOME TO EELAF**, where connections are built, and comfort zones become cherished memories.



ايلاف

WHY?  
eelaf





INTRODUCING THE FIRST BOUTIQUE COMPOUND DESIGNED EXCLUSIVELY FOR MILLENNIALS - A HAVEN THAT CATERS TO ALL THEIR NEEDS AND INTERESTS.

In this stage of life where every connection matters and everything is interconnected, our boutique compound offers a unique space where life bonds flow seamlessly. It's a place where our native language is value, and every aspect of the community is designed to foster meaningful connections and experiences. Join us at our one-of-a-kind community and experience firsthand the power of connection in a vibrant and thriving environment.

We understand what makes this dynamic generation tick, and we've crafted a community that appeals to every aspect of their lives. Investors will also find it enticing. Our community welcomes individuals with diverse interests and passions, whether you're an eco-minded individual, a pet lover, a nature lover or a seeker of experiences. We value the importance of connections above all else, starting with family, followed by friends, coworkers, neighbors, and social gatherings.



OUR  
LOCATION

“

eolaf

Where Accessibility Meets Tranquility -  
Your Perfect Home

”



WELCOME TO EELAF, a stunning development located directly on the Suez road, making it easily accessible through various routes such as the Old Suez Road, New Suez Road, Youssef Elsebai axis, Alnaser Axis road, and the Ring Road.

## ACCESSIBILITY

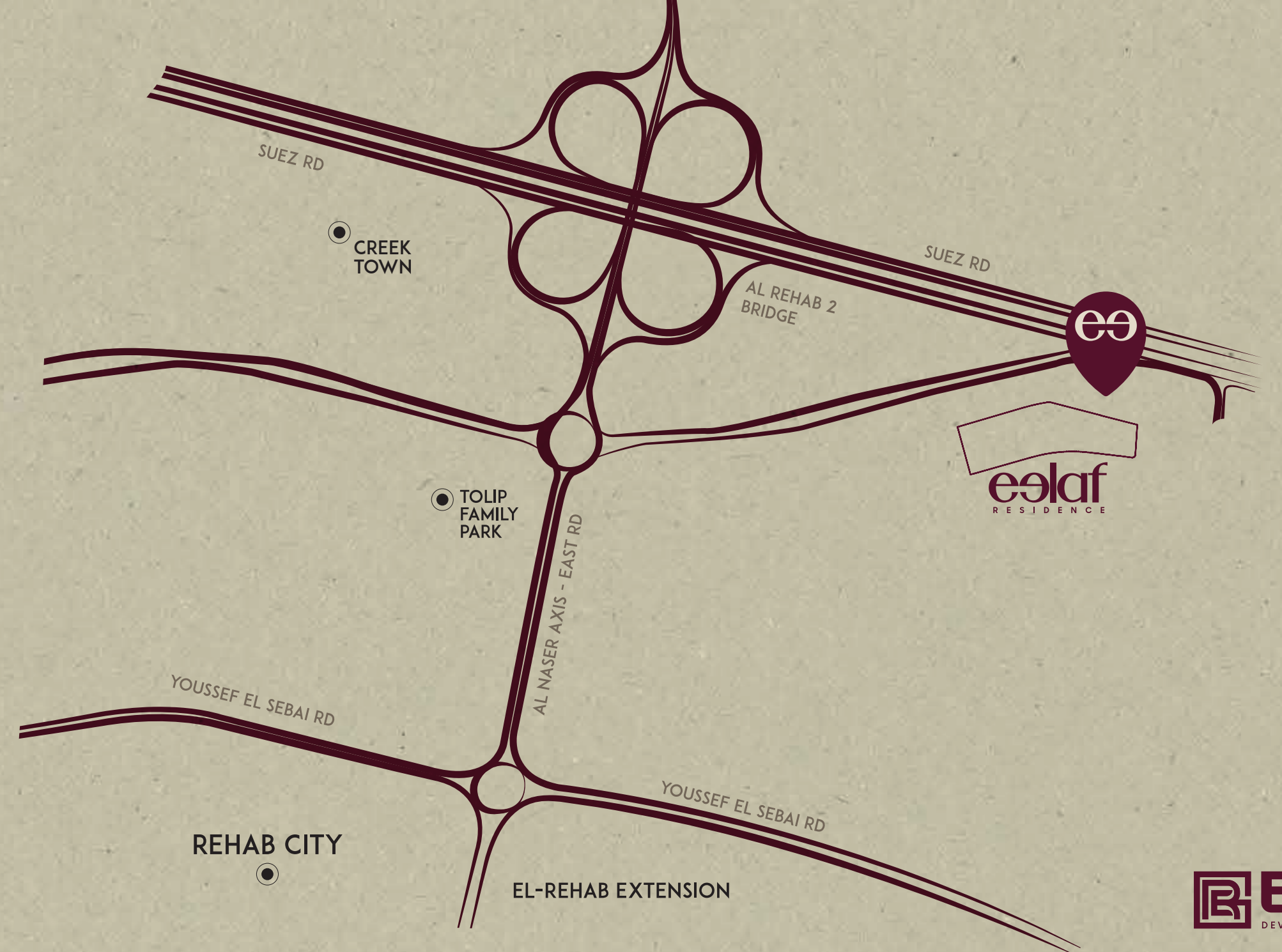
- ↻ Old Suez Road
- ↻ New Suez Road
- ↻ Youssef Elsebai
- ↻ Alnaser Axis road
- ↻ Ring Road

**10 mins**  
from the airport

**5 mins**  
from al Rehab

**15 mins**  
from New Capital

**10 mins**  
from the AUC





The strategic location of Eelaf puts you within easy reach of various attractions. You'll be pleased to know that it's just a 10-minute drive from the airport, ensuring convenient travel connections. Additionally, Al Rehab City is only 5 minutes away, allowing for easy access to its amenities and services. If you're looking to explore the bustling heart of Egypt's future, the New Capital is just 15 minutes away. Finally, the prestigious American University in Cairo (AUC) can be reached in a mere 10 minutes.

Immerse yourself in the comfort and convenience of Eelaf's location, as it offers proximity to key destinations, ensuring that your daily commute and leisure activities are all within easy reach. Experience the perfect blend of accessibility and tranquility at Eelaf.

## OUR LOCATION



# ARCHITECTURAL CONCEPT

“  
**eelaf**

Where Urban Design and Nature Blend  
Beautifully

”

# MASTER PLAN

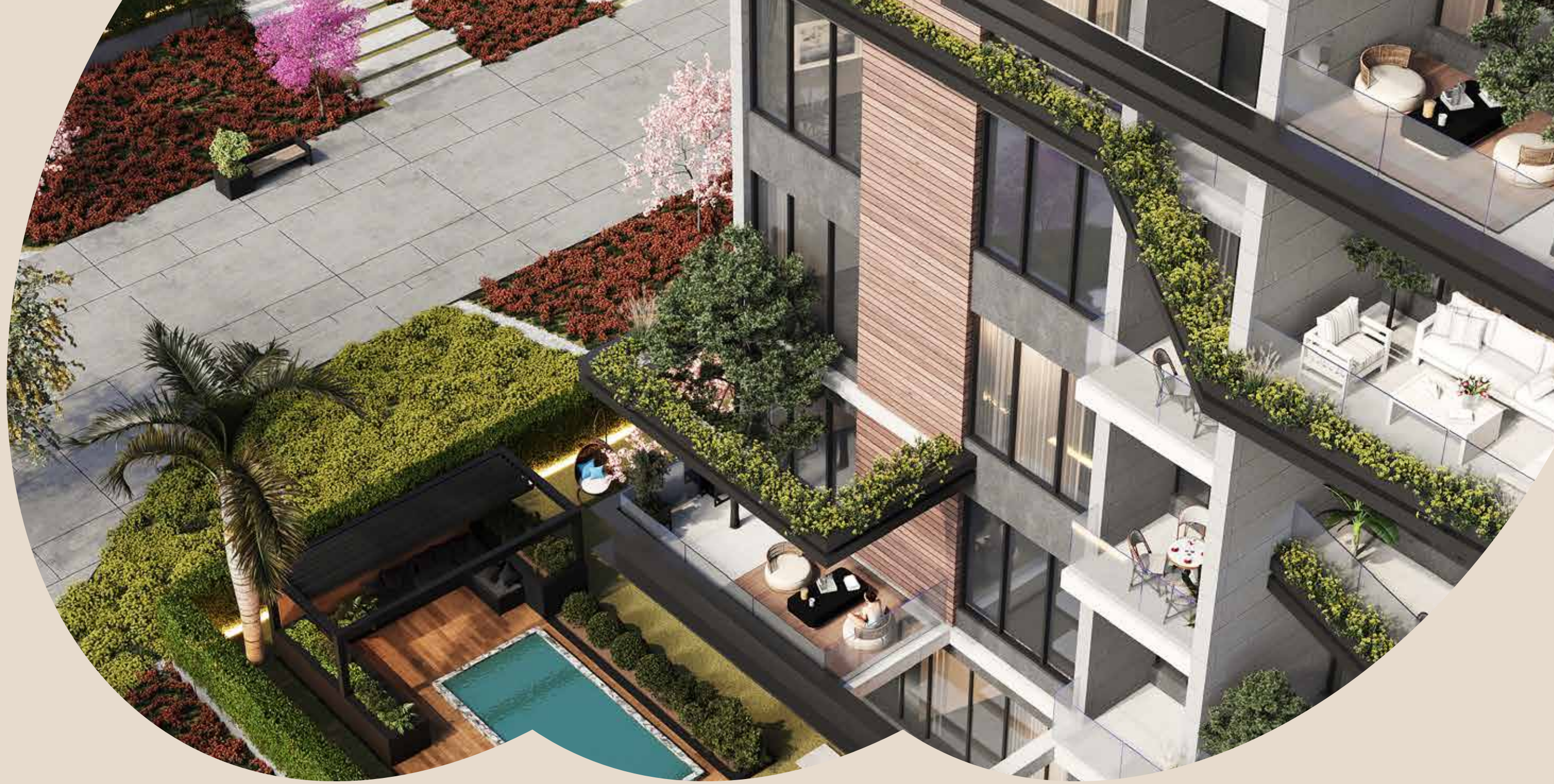
ایلاف

- 1- Skate Zone
- 2- Yoga Zone
- 3- Fit Strip
- 4- Quiet Zone
- 5- Avatar Garden
- 6- Kids Playground
- 7- Club House
- 8- Swimming Pool
- 9- Hotel
- 10- Main Gate
- 11- Side Gate
- 12- Bicycle Lane

Eelaf takes pride in its world-class homes that are precisely designed with an urban architectural concept. Each home is thoughtfully created to capture panoramic views from every angle, allowing residents to indulge in stimulating scenery. Privacy and flawless style are paramount at Eelaf, as the design ensures individual spaces cater to personal preferences and needs.



ARCHITECTURAL  
CONCEPT





## ARCHITECTURAL CONCEPT

The urban architectural design of Eelaf is the brainchild of Hafez Architects, a renown architectural firm\* and Oko Plan\*, a renowned German-based organization specializing in urban design and planning. Their expertise in biophilic designs is evident in Eelaf, where the human tendency to interact and associate closely with other forms of life in nature is celebrated. This concept creates a harmonious environment that promotes well-being and a strong connection to the surrounding natural elements.

The residential units at Eelaf are meticulously crafted to connect inhabitants with nature. With appealing sunlit designs, these homes are intended to revitalize and brighten living spaces, creating a pleasant atmosphere. The buildings are strategically spaced to allow for widespread areas between them, maximizing the integration of nature into the community.



AT EELAF, EXPECT NOTHING LESS THAN  
EXCEPTIONAL ARCHITECTURAL DESIGN THAT COMBINES FUNCTIONALITY, AESTHETICS,  
AND A DEEP APPRECIATION FOR THE BEAUTY OF NATURE. EXPERIENCE THE PERFECT  
BLEND OF URBAN SOPHISTICATION AND A SERENE  
NATURAL SETTING.





# A M E N I T I E S

“

Experience the Delightful Tapestry of

**eolaf**

Stories Woven with Care

”





**Eelaf offers a wide range of amenities that provide convenience and a high-quality living experience. With an inclusive bundle of services and facilities, everything you need is right at your fingertips.**

**From supermarkets, grocers, a pharmacy, bakery, bank, mosque, to laundry services and more, Eelaf caters to everyday necessities.**



## UNWIND IN THE NATURE

The facilities at Eelaf are designed to create an extraordinary experience for its residents and visitors. Green landscapes have been carefully aligned to capture the sun and maximize open vistas. These exclusive green spaces beautifully complement the surrounding architecture, incorporating soft and hard landscaping as well as water features to enhance the ambiance. Seating areas and gardens offer a dedicated play space for families, expansive lawns to soak up sunlight and enjoy the views and frequent seating for relaxation and connection with nature.

---

ايلاف

# PEDESTRIAN LANES

For those who enjoy outdoor activities, Eelaf provides walkways and jogging tracks that are interconnected through parks and open spaces. The jogging track offers a space for residents to stay active and exercise, while the peaceful pedestrian lanes surrounded by nature are perfect for casual strolls. Immerse yourself in breathtaking landscapes and refreshing air as you explore these well-designed pathways.





## PET FRIENDLY ZONE

Eelaf also understands the importance of our furry friends. That's why there are pet-friendly zones where you can pamper your pets in an environment filled with love and care. Your pets are sure to appreciate the thoughtfulness put into creating these dedicated spaces for them within the project.

With a focus on convenience, aesthetics, and the well-being of its residents, Eelaf ensures that every aspect of your lifestyle is catered for, providing a truly exceptional living experience.



QUIET ZONE





Where fitness meets nature along a dedicated strip. Our outdoor gym, seamlessly integrated into lush greenery, offers panoramic views for your workouts. Enjoy a strip designed for jogging, cycling, or brisk walks. Immerse yourself in nature-inspired exercises, from high-intensity workouts with birdsong in the background. Discover tranquil workout zones, fostering a serene environment.

FIT STRIP



## Y O G A

A tranquil space seamlessly integrated into lush surroundings. Surrounded by nature, this dedicated area invites mindful practice. Immerse yourself in the calming atmosphere, finding balance of body and mind



# SKATING

Effortlessly blend into our vibrant haven. Glide through the abundant green surroundings, immersing yourself in the invigorating outdoors. Whether you're a newcomer or a seasoned enthusiast, uncover your rhythm in this peaceful sanctuary





## GATHERING AREAS

A welcoming area tucked amid nature. Enveloped by lush greenery, it serves as an ideal setting for community events and informal gatherings. Embrace the inviting ambiance of this serene retreat with us



## AVATAR GARDEN

Discover magic at Eelaf's Avatar Garden—an illuminated haven in nature. With radiant trees creating a tranquil escape, immerse yourself in the gentle glow and serene atmosphere. Visit for a captivating outdoor experience where nature's charm unfolds magically





For outdoor fun, Eelaf unveils a lively Kids' Playground. Nestled in green spaces, it's a hub for joyful activities, fostering creativity and play. From play structures to open spaces, it's where laughter and exploration thrive. Immerse your children in nature, ensuring every visit is filled with joy and discovery.

K I D S P L A Y G R O U N D

# SMART HOMES

Partnership with Vodafone Gated Communities



Enjoy the ultimate experience with Vodafone Home Compound services :

- Internet Service with speed up to 300 Mbps.
- Landline service.
- Free OTT services “Shahid, Watch IT, StarzPlay, OSN+ and TOD”.

### *Go Smart*

Smart Home automation provides homeowners security, comfort, convenience and energy efficiency by allowing them to control their smart home devices via mobile application or voice command.



UNIT TYPES



Experience a harmonious blend of urban inspiration and biophilic designs at Eelaf, where diverse residential structures offer a range of unit types to suit every preference. Each zone within the project is thoughtfully designed to ensure privacy while providing residents with inspiring sceneries. With a variety of apartments available, ranging from 121 sq meters to 231 sq meters, there is something to meet the needs of everyone. Choose from 2-bedroom to 4-bedroom apartments, each offering spacious living areas and modern amenities.

For those seeking luxury and even more space, Eelaf also offers a series of high-end luxury duplexes. These stunning units provide over 270 sq meters of living space and feature up to 5 bedrooms. Whether you are looking for a cozy apartment or a grand, luxurious residence, Eelaf has a unit type that will exceed your expectations.



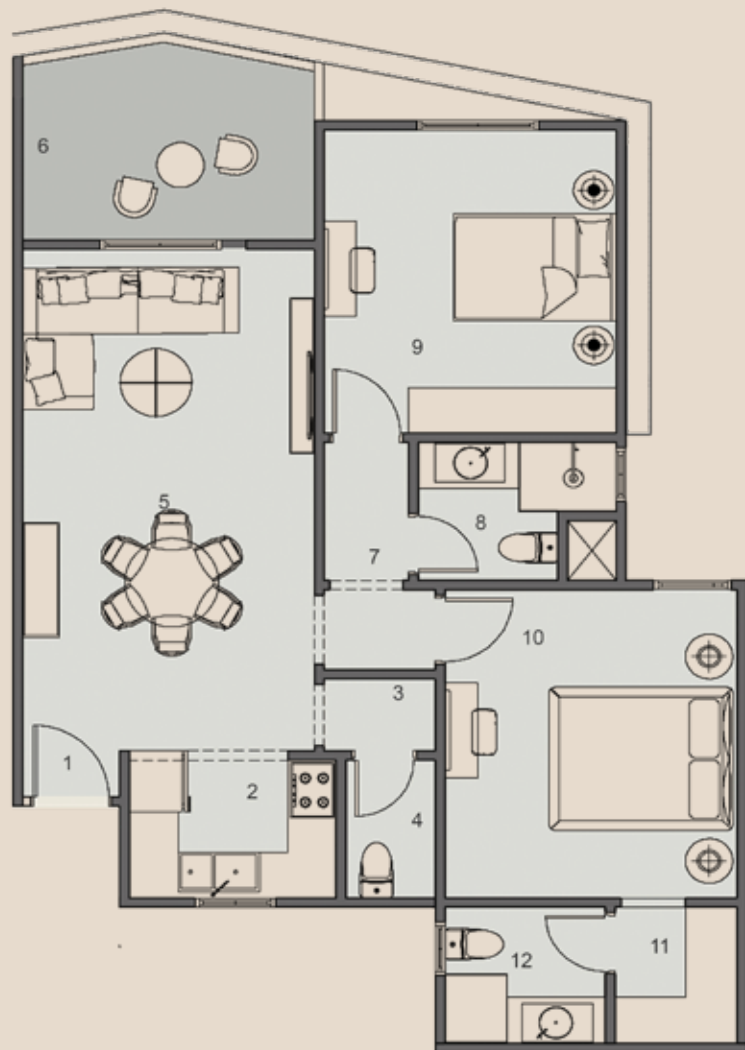
TOTAL AREA

**150 m<sup>2</sup>**

1-Entrance	1.70 m x 1.35 m
2-Lobby 1	1.30 m x 1.05 m
3-Toilet 1	1.95 m x 1.30 m
4-Maid Room	2.60 m x 1.80 m
5-Laundry	1.25 m x 0.95 m
6-Toilet 2	1.65 m x 1.25 m
7-Dining	3.70 m x 3.15 m
8-Kitchen	3.95 m x 2.75 m
9-Reception	3.70 m x 3.15 m
10-Lobby 2	1.50 m x 1.20 m
11-Lobby 3	1.90 m x 1.15 m
12-Toilet 3	2.60 m x 1.25 m
13-Bedroom 1	4.15 m x 3.80 m
14-Master Bedroom	4.15 m x 3.80 m
15-Dressing	1.90 m x 1.70 m
16-Master Toilet	2.15 m x 1.90 m







1-Entrance	
2-Kitchen	2.70 m x 2.00 m
3-Lobby 1	1.50 m x 1.05 m
4-Toilet 1	2.00 m x 1.20 m
5-Reception	7.50 m x 3.80m
6-Terrace	3.80 m x 2.77 m
7-Lobby 2	3.10 m x 1.45 m
8-Toilet 2	2.70 m x 1.90 m
9-Bedroom 1	4.15 m x 3.80 m
10-Master Bedroom	4.20 m x 3.80 m
11-Dressing	1.90 m x 1.60 m
12-Master Toilet	2.20 m x 1.90 m

TOTAL AREA

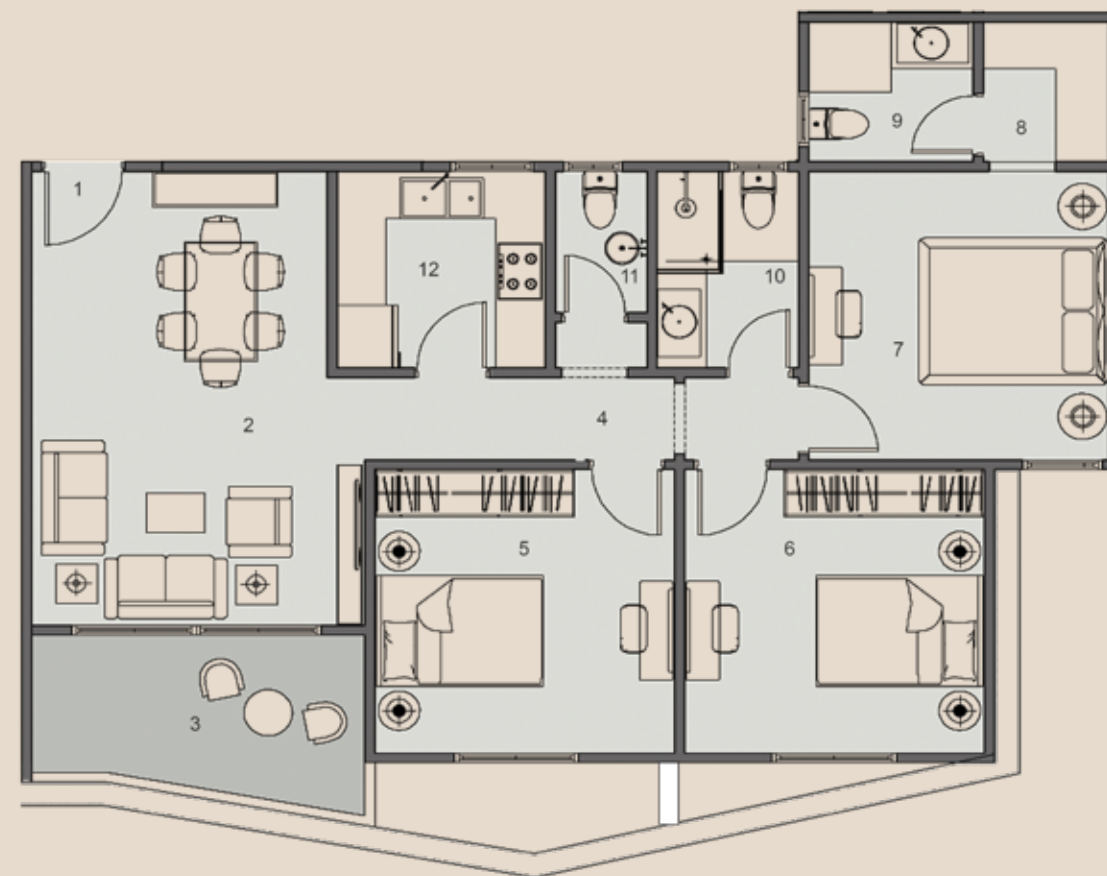
**120 m<sup>2</sup>**

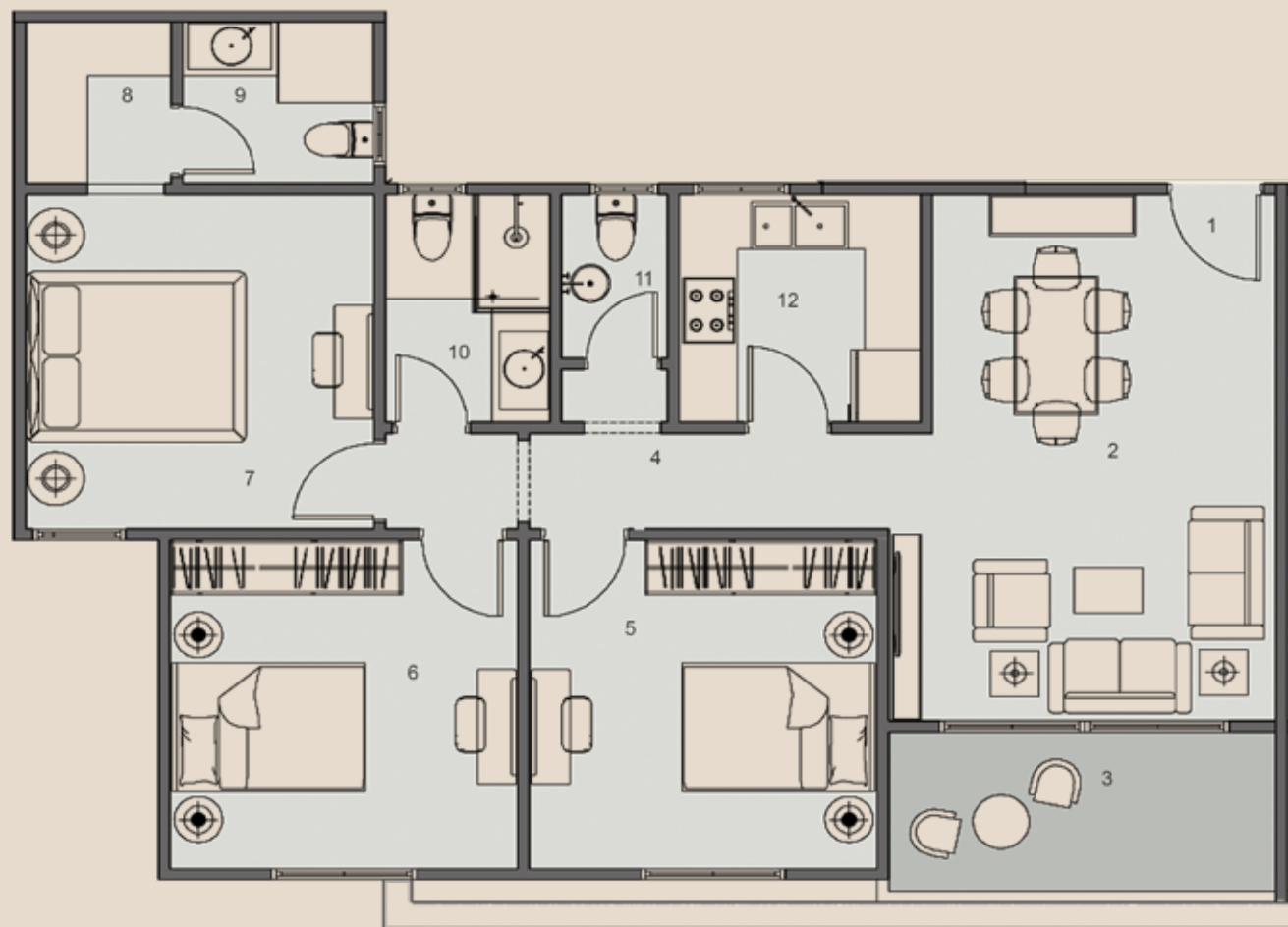


TOTAL AREA

**135 m<sup>2</sup>**

1-Entrance	
2-Reception	5.83 m x 4.18 m
3-Terrace	4.00 m x 2.50 m
4-Corridor	5.21 m x 1.17 m
5-Bedroom 1	3.72 m x 3.78m
6-Bedroom 2	3.78 m x 3.78 m
7-Master Bedroom	3.78 m x 3.79 m
8-Dressing	1.90 m x 1.68 m
9-Toilet 1	2.16 m x 1.90 m
10-Toilet 2	1.82 m x 2.70 m
11-Toilet 3	2.68 m x 1.28 m
12-Kitchen	2.68 m x 2.62 m





1-Entrance	
2-Reception	5.83 m x 4.18 m
3-Terrace	4.00 m x 1.95 m
4-Corridor	5.21 m x 1.17 m
5-Bedroom 1	3.72 m x 3.78m
6-Bedroom 2	3.78 m x 3.78 m
7-Master Bedroom	3.78 m x 3.79 m
8-Dressing	1.90 m x 1.68 m
9-Toilet 1	2.16 m x 1.90 m
10-Toilet 2	1.82 m x 2.70 m
11-Toilet 3	2.68 m x 1.28 m
12-Kitchen	2.68 m x 2.62 m

TOTAL AREA

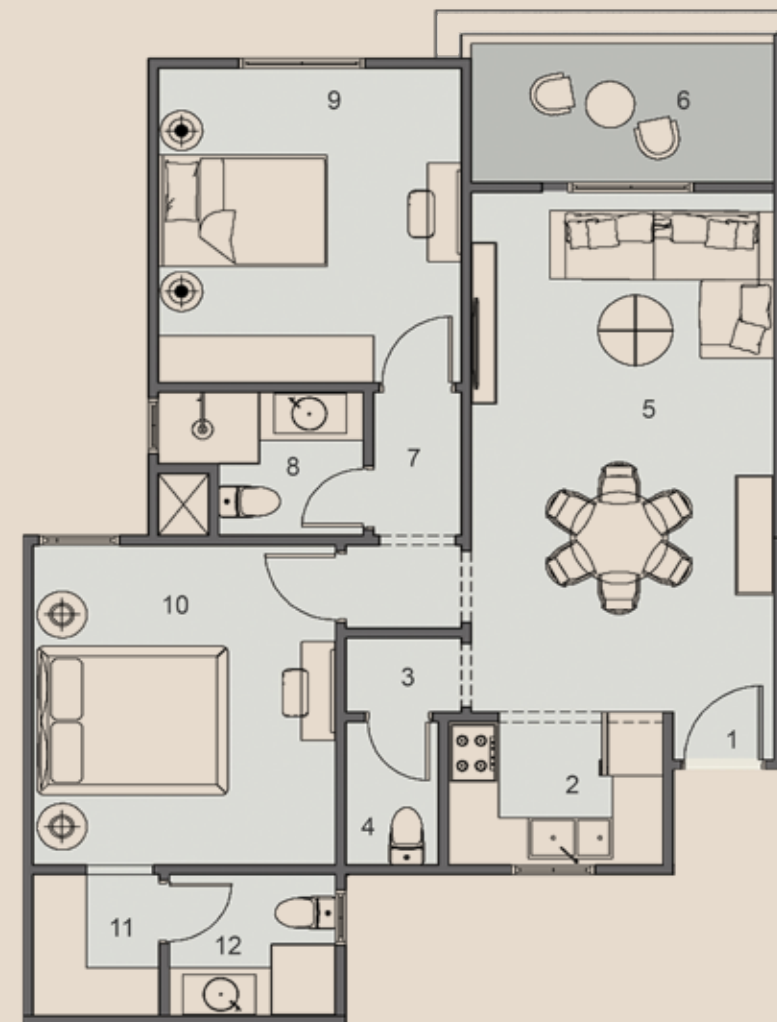
**135 m<sup>2</sup>**



TOTAL AREA

**120 m<sup>2</sup>**

1-Entrance	
2-Kitchen	2.70 m x 2.00 m
3-Lobby 1	1.50 m x 1.05 m
4-Toilet 1	2.00 m x 1.20 m
5-Reception	7.50 m x 3.80m
6-Terrace	3.80 m x 1.95 m
7-Lobby 2	3.10 m x 1.45 m
8-Toilet 2	2.70 m x 1.90 m
9-Bedroom 1	4.15 m x 3.80 m
10-Master Bedroom	4.20 m x 3.80 m
11-Dressing	1.90 m x 1.60 m
12-Master Toilet	2.20 m x 1.90 m





1-Entrance	1.80 m x 1.45 m
2-Kitchen	2.95 m x 2.70 m
3-Reception	5.45 m x 4.35 m
4-Terrace	4.30 m x 2.35 m
5-Lobby	2.25 m x 1.15m
6-Toilet	2.70 m x 2.25 m
7-Bedroom	4.10 m x 3.95 m

TOTAL AREA

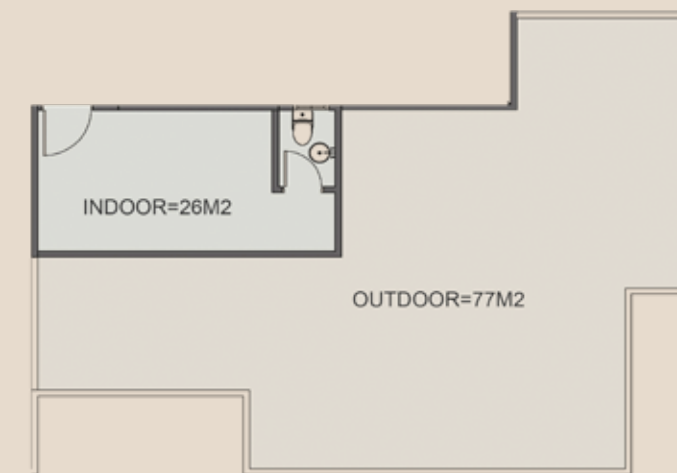
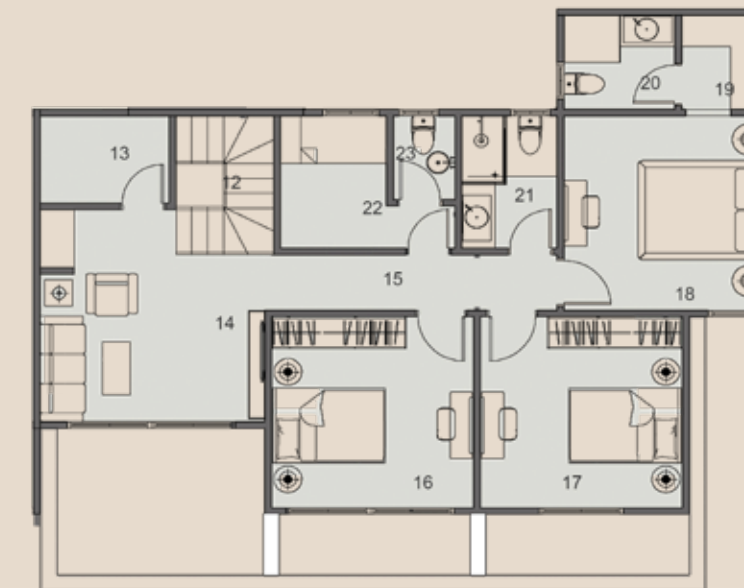
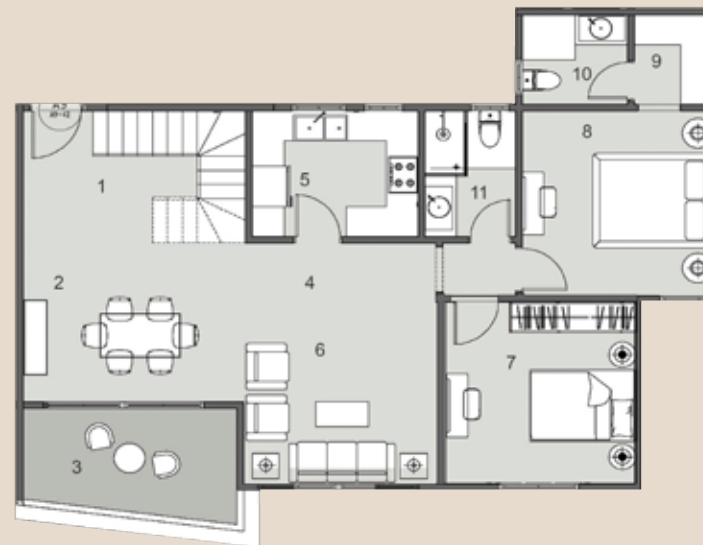
**85 m<sup>2</sup>**

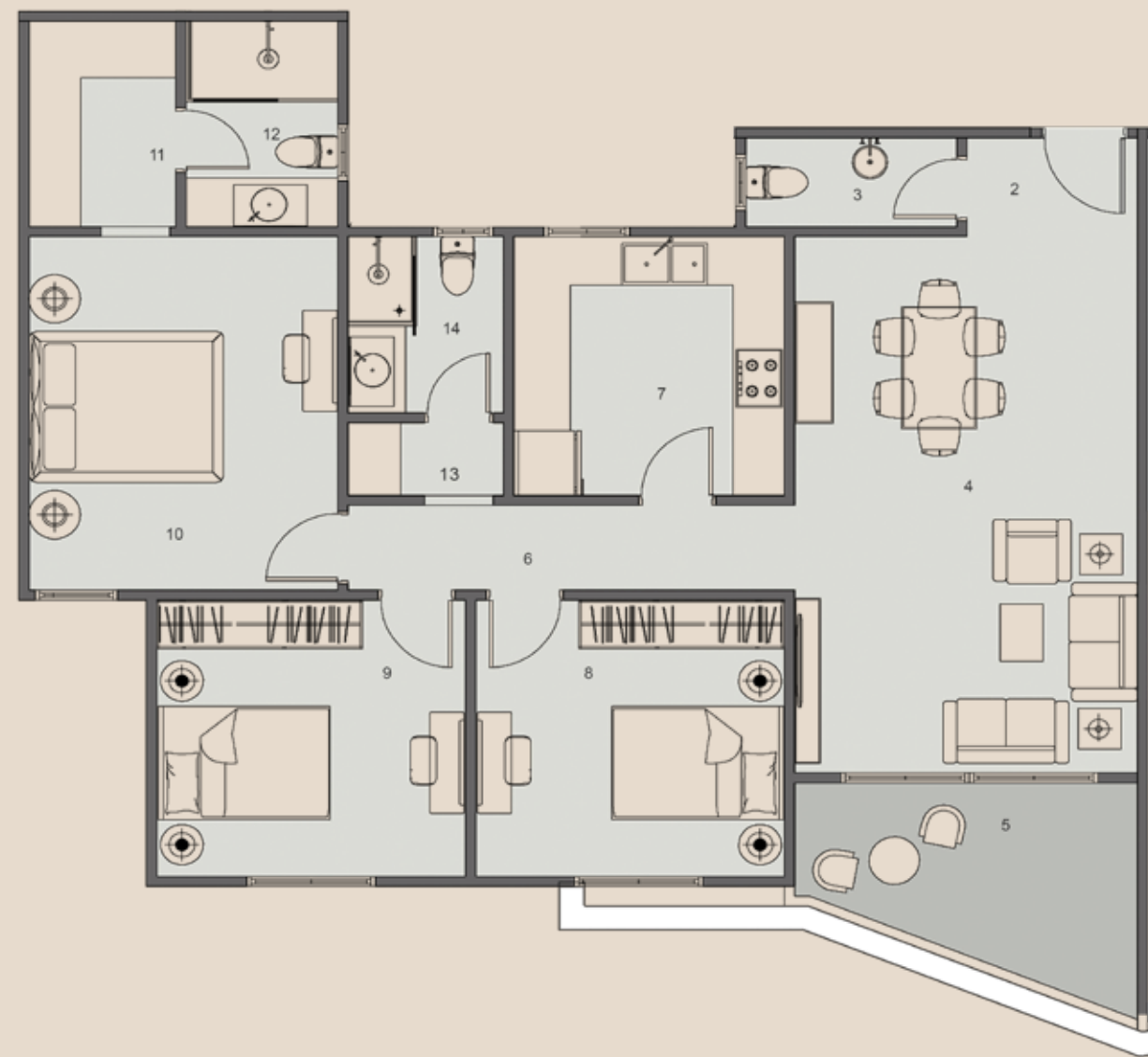


TOTAL AREA

**260 m<sup>2</sup>**

1-Staircase	4.30 m x 2.70 m
2-Dining	4.20 m x 3.20 m
3-Terrace	4.10 m x 2.30 m
4-Lobby 1	1.55 m x 1.05 m
5-Kitchen	3.20 m x 2.75 m
6-Living 1	3.75 m x 3.75 m
7-Bedroom	3.75 m x 3.70 m
8-Master Bedroom	3.80 m x 3.80 m
9-Dressing	1.70 m x 1.90 m
10-Master Toilet	2.15 m x 1.90 m
11-Toilet 1	2.75 m x 1.80 m
12-Staircase	2.75 m x 1.85 m
13-Storage	2.45 m x 1.85 m
14-Living 3	4.20 m x 4.15 m
15-Lobby 2	5.10 m x 1.15 m
16-Bedroom 1	3.80 m x 3.70 m
17-Bedroom 2	3.80 m x 3.80 m
18-Master Bedroom 2	3.80 m x 3.80 m
19-Dressing	1.90 m x 1.65 m
20-Master Toilet	2.15 m x 1.90 m
21-Toilet 2	2.75 m x 1.85 m
22-Maid Room	2.75 m x 2.00 m
23-Maid Toilet	1.80 m x 1.20 m





1-Entrance	
2-Lobby 1	2.11 m x 1.28 m
3-Toilet 1	2.64 m x 1.22 m
4-Reception	4.12 m x 6.81 m
5-Terrace	4.00 m x 3.06 m
6-Lobby 2	5.21 m x 1.17 m
7-Kitchen	3.28 m x 2.68 m
8-Bedroom 1	3.72 m x 3.60 m
9-Bedroom 2	3.78 m x 3.60 m
10-Master Bedroom	3.78 m x 4.55 m
11-Dressing	1.89 m x 2.54 m
12-Toilet 2	1.95 m x 2.66 m
13-Laundry	1.93 m x 1.02 m
14-Toilet 3	1.93 m x 2.36 m

TOTAL AREA

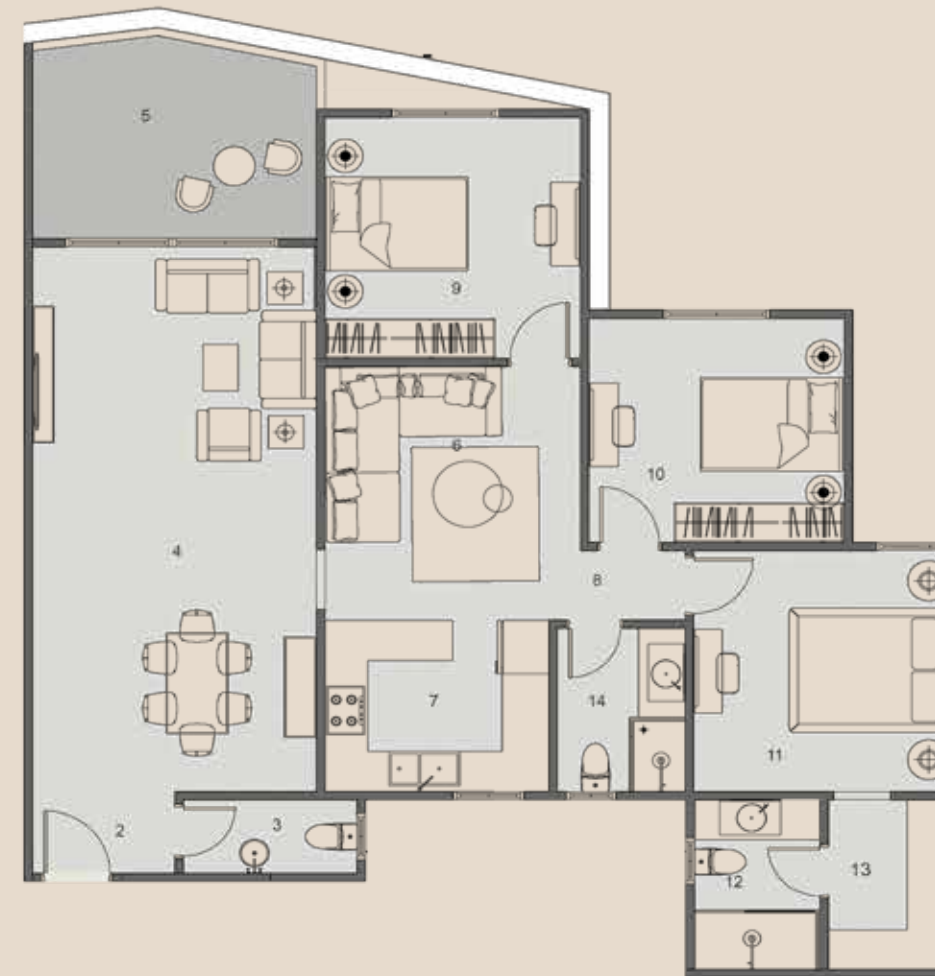
**160 m<sup>2</sup>**



TOTAL AREA

**175 m<sup>2</sup>**

1-Entrance	
2-Lobby 1	2.12 m x 1.28 m
3-Toilet 1	2.45 m x 1.28 m
4-Reception	4.12 m x 8.32 m
5-Terrace	4.06 m x 3.15 m
6-Living	3.72 m x 3.85 m
7-Kitchen	3.28 m x 2.68 m
8-Lobby	1.48 m x 1.16 m
9-Bedroom 1	3.78 m x 3.78 m
10-Bedroom 2	3.78 m x 3.53 m
11-Master Bedroom	3.79 m x 3.78 m
12-Toilet	1.95 m x 2.60 m
13-Dressing	1.95 m x 2.66 m
14-Toilet 3	1.92 m x 2.62 m





SIGNATURE UNITS





**EXPERIENCE THE EPITOME OF LUXURY LIVING WITH OUR SIGNATURE UNITS AT EELAF - THE GARDEN VILLA AND SKY VILLA.**

**These exclusive units boast a double-height ceiling, creating a grand and spacious atmosphere that will leave you in awe.**

**Step out onto your expansive terrace, where you can bask in the beauty of your surroundings and enjoy breathtaking views. Immerse yourself in nature and create your own oasis.**

**The Garden Villa offers the perfect blend of indoor and outdoor living, with a private garden that allows you to connect with nature right from your doorstep. Imagine waking up to the soothing sounds of birds chirping and enjoying your morning coffee surrounded by lush greenery.**

**For those seeking a true retreat in the sky, the Sky Villa provides an elevated living experience. Enjoy the serenity of being above it all, as you take in panoramic views of the city skyline from your private terrace.**

**SIGNATURE UNITS**

SECURITY  
& SAFETY

“

Discover

eolaf

Where Convenience and Serenity  
Converge

”





**At Eelaf, your safety and security are our top priorities. We understand the importance of peace of mind, which is why we have implemented comprehensive security measures throughout the community. Our 24/7 on-site security services provide round-the-clock protection, ensuring that you always feel safe. Our extensive surveillance systems cover not only the interior of the compound but also all outdoor and public spaces, giving you complete peace of mind wherever you go. With isolated entrances equipped with electronic gates, we take every precaution to ensure the safety of our residents and their guests. Rest assured that at Eelaf, we prioritize your security to create a truly secure and serene living environment.**





إيلاف

PARTNERS



**HAFEZ CONSULTANTS**  
MOHAMED ESSAM HAFEZ  
ARCHITECTS ■ PLANNERS ■ INTERIOR DESIGNERS

Hafez Consultants is a renowned market leader in the field of design conceptualization, boasting an impressive 50 years of expertise. With a portfolio of over 1200 projects, they have successfully completed a diverse range of assignments including multi complex buildings, residential spaces, public structures, industrial facilities, corporate establishments, as well as interiors and landscape projects throughout the region.

ÖKOPLAN is a reputable full-service engineering consultancy firm that was originally established in Stuttgart, Germany in 1990. We later expanded our operations and opened an office in Cairo, Egypt in 1993. As a unified multi-discipline organization, we take pride in delivering innovative and cost-effective solutions that not only meet but exceed our clients' needs.

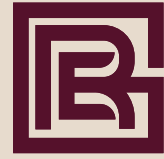
Our team of more than 180 skilled engineers works collaboratively to provide a comprehensive range of services, including planning, urban design, landscape design, architectural design, interior design, and structural engineering.





A B O U T





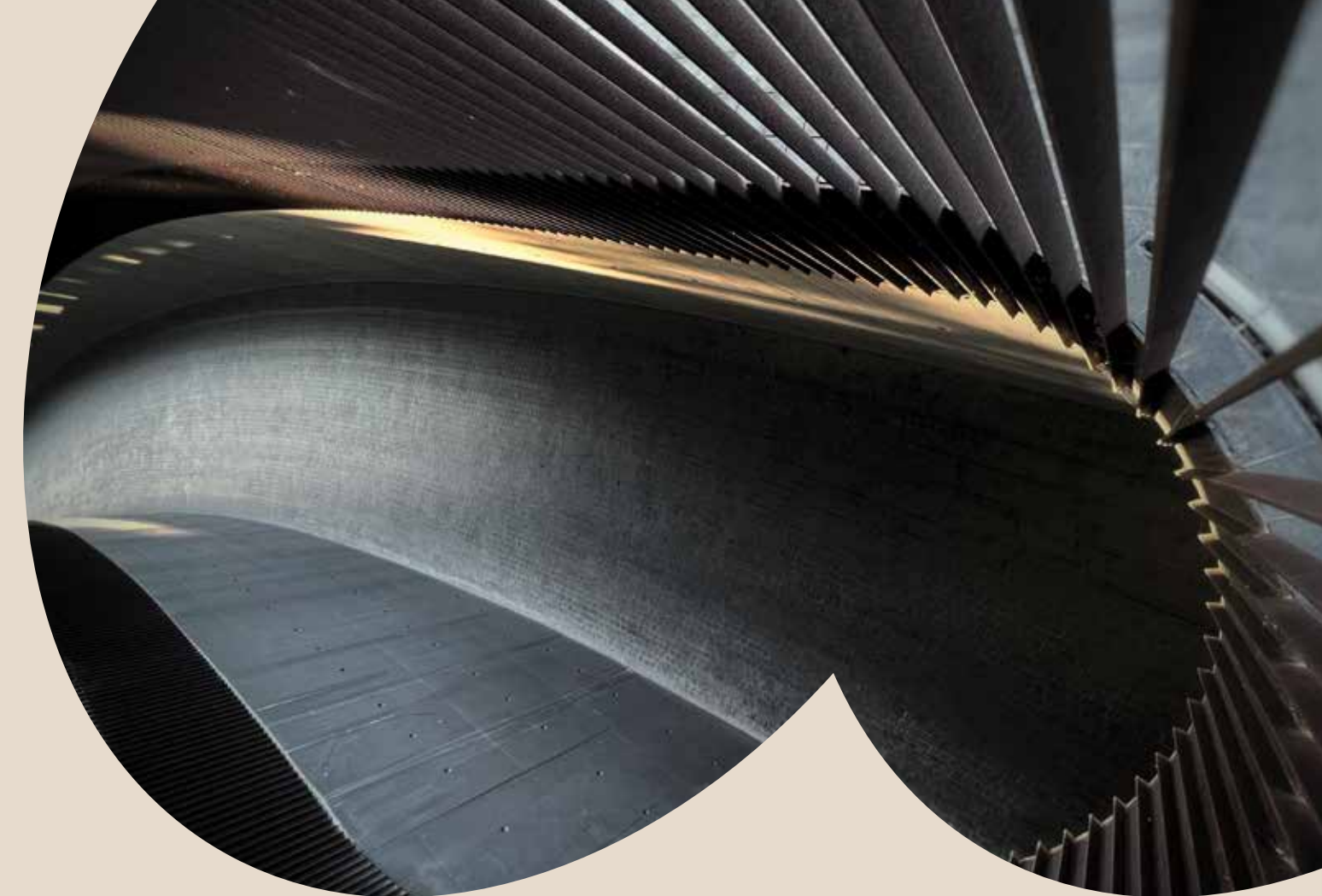
Since its establishment in 2012, ERG Developments has built a solid reputation for crafting superior infrastructure and real estate projects with meticulous attention to detail. Guided by the visionary leadership of Mr. Mohamed Rizk, our company has emerged as a prominent player in the real estate development sector, particularly in the East of Delta region. With a rich history dating back to 2005, wherein we facilitated the supply chain, shipping, importing, and exporting of goods to and from Egypt, we bring comprehensive expertise and an unwavering commitment to uncompromising quality to every project we undertake.



For the past decade, ERG has ventured into the realm of real estate, successfully creating a series of residential spaces strategically located within New Capital, Damietta city, and Ras El Bar city. These endeavors stand as a testament to our deep understanding of the market and our unwavering dedication to providing exceptional living and commercial spaces. By adopting a customer-centric approach, we constantly seek to add significant value to our developments, putting people first and prioritizing their needs and desires.

Our goal is to foster meaningful lifelong relationships based on loyalty and mutual trust, connecting with our customer base on a deeper level.

We take immense pride in our professional management team, who maximize our strength and value through their vast expertise. Together, we embrace and promote new business practices, seamlessly blending them into our corporate synergy. We strive to maintain a fit and cheerful work environment that encourages collaboration, while upholding the values of integrity and a team spirit that are ingrained in our lifelong experiences. At ERG Developments, we are committed to delivering outstanding projects that not only meet but exceed the expectations of our clients, investing in the future of Egypt's real estate landscape.



**Disclaimer:**

The information depicted herein, for e.g. master plans, floor plans, furniture layout, fittings, illustrations, specifications, designs, dimensions, rendered views, colors, amenities and facilities etc. are subject to change without notifications as may be required by the relevant authorities or the developer's architect, and cannot form part of an offer or contract. The developer is wholly exempt from any liability on account of any claim in this regard.



**15519**

[www.ergdevelopments.com](http://www.ergdevelopments.com)