



HASSAN ALLAM
PROPERTIES

Proximity

HAPTOWN MOSTAKBAL CITY; THE NEW CAIRO'S NATURAL EXTENSION.

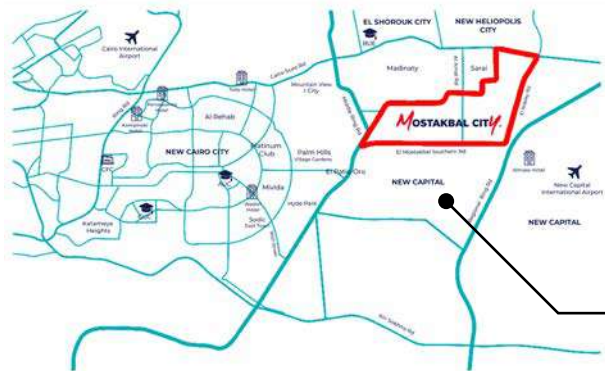
Situated within the lush and prime location of Mostakbal City, Haptown emerges with unmatched suburban convenience. The town stands out as New Cairo's latest extension, whilst exclusively overlooking south of Mostakbal Road.

Being only driving minutes away from the capital's eastern and north-eastern vicinities, Haptown's residents are in close proximity to the Cairo-Suez highway, the Cairo-Sokhna highway and Road 90.

While enjoying nearby convenience to the capital's central destinations, residents can thrive with the immediate proximity provided for their everyday errands and needs. Their surrounding neighborhoods, as well as the town's mixed-use area, commercial district and business center lie only a few minutes from their door steps. Far from the city's noise and bustle, Haptown features unparalleled proximity amidst peaceful surroundings and a vibrant community



Location.. Location.. Location..



- RESIDENTIAL
- SCHOOL
- SPORTING CLUB
- UNIVERSITY
- GATE
- GAS STATION
- MIXED USE PROJECTS
AL RABWA DEVELOPMENTS

- | | | |
|------------------------|---------------------------------|---------------------|
| 1 ARAB CONTRACTORS | 6 ARIA | 11 CANYON |
| 2 GREEN SQUARE | 7 LA MIRADA EL MOSTAKBAL | 12 HAPTOWN |
| 3 ZIZINIA EL MOSTAKBAL | 8 DEVELOPMENT & HOUSING FOR REI | 13 IL BOSCO CITY |
| 4 L'AVENIR | 9 BLOOMFIELDS | 14 GOLF PORTO CAIRO |
| 5 NEOPOLIS | 10 CITY OF ODYSSIA | 15 BETA GREENS |



New Administrative Capital

Source: mostakbal-re.com



HAPTOWN

MoStakbal City

Master Plan





Disclaimer
Masterplan is for indicative purposes only and is subject to change.



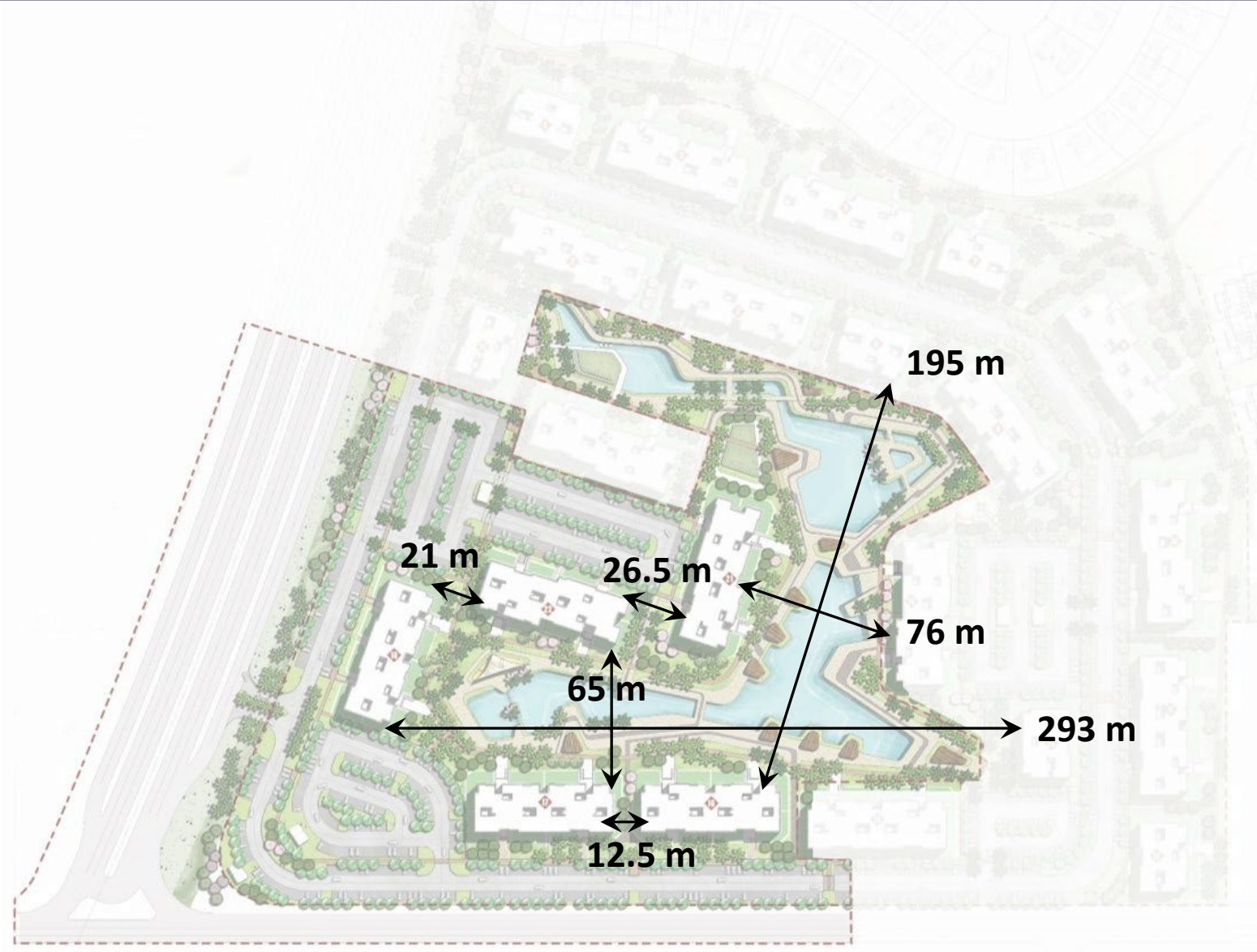
Master Planned & Landscaped By:

Local Consultant: SITES INTERNATIONAL







Designed By:

Local Consultant: PROFILERZ

Distances between blocks



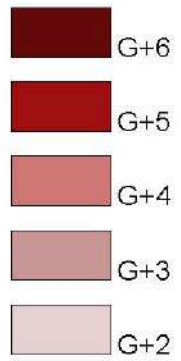
Features

-  F&B Kiosks and Pergolas
-  Kids Areas
-  Multi-Purpose Lawn
-  Snack Bar
-  Jogging Track
-  Transformer Rooms



Heights vary from

G+2 to **G+6**





Disclaimer

*All renderings and landscaping visuals, materials, facades are for indicative purposes only and are subject to changes.



1 Bedroom Apartment

Disclaimer

*All renderings and landscaping visuals, materials, facades are for indicative purposes only and are subject to changes.



Disclaimer

*All renderings and landscaping visuals, materials, facades are for indicative purposes only and are subject to changes.

Park 226

Where Numbers Line Up In Your Favor

If well-being is your number one priority, connecting with the outdoors is second nature or if you simply believe the whole is more than the sum of all parts, Park 226 is where it all adds up, thanks to 6 layers of uninterrupted beauty where the outdoors are an extension of your home. The numerical digits 226 pay tribute to a colorful variety of building heights, ranging in their elevations from G + 2 to G + 6 to reflect a contemporary symphony of various altitudes, blending in absolute harmony with lush landscapes, flowing lakes and inviting communal parks. Expertly designed by PROFILZER, each building adopts a versatile nature of timeless functionality to directly open onto sweeping views of a lush park, as well as get together functions that revolve around well-being and family connection. From BBQ spaces, jogging and walking trails to safe playgrounds, Park 226 is an innovative address, re-imagining space from a fresh perspective that puts social interaction at the heart of everyday.



Disclaimer

*All renderings and landscaping visuals, materials, facades are for indicative purposes only and are subject to changes.

Park 226

Where Numbers Line Up In Your Favor

If well-being is your number one priority, connecting with the outdoors is second nature or if you simply believe the whole is more than the sum of all parts, Park 226 is where it all adds up, thanks to 6 layers of uninterrupted beauty where the outdoors are an extension of your home. The numerical digits 226 pay tribute to a colorful variety of building heights, ranging in their elevations from G + 2 to G + 6 to reflect a contemporary symphony of various altitudes, blending in absolute harmony with lush landscapes, flowing lakes and inviting communal parks. Expertly designed by PROFILZER, each building adopts a versatile nature of timeless functionality to directly open onto sweeping views of a lush park, as well as get together functions that revolve around well-being and family connection. From BBQ spaces, jogging and walking trails to safe playgrounds, Park 226 is an innovative address, re-imagining space from a fresh perspective that puts social interaction at the heart of everyday.



Disclaimer

*All renderings and landscaping visuals, materials, facades are for indicative purposes only and are subject to changes.



Disclaimer

*All renderings and landscaping visuals, materials, facades are for indicative purposes only and are subject to changes.



Disclaimer

*All renderings and landscaping visuals, materials, facades are for indicative purposes only and are subject to changes.



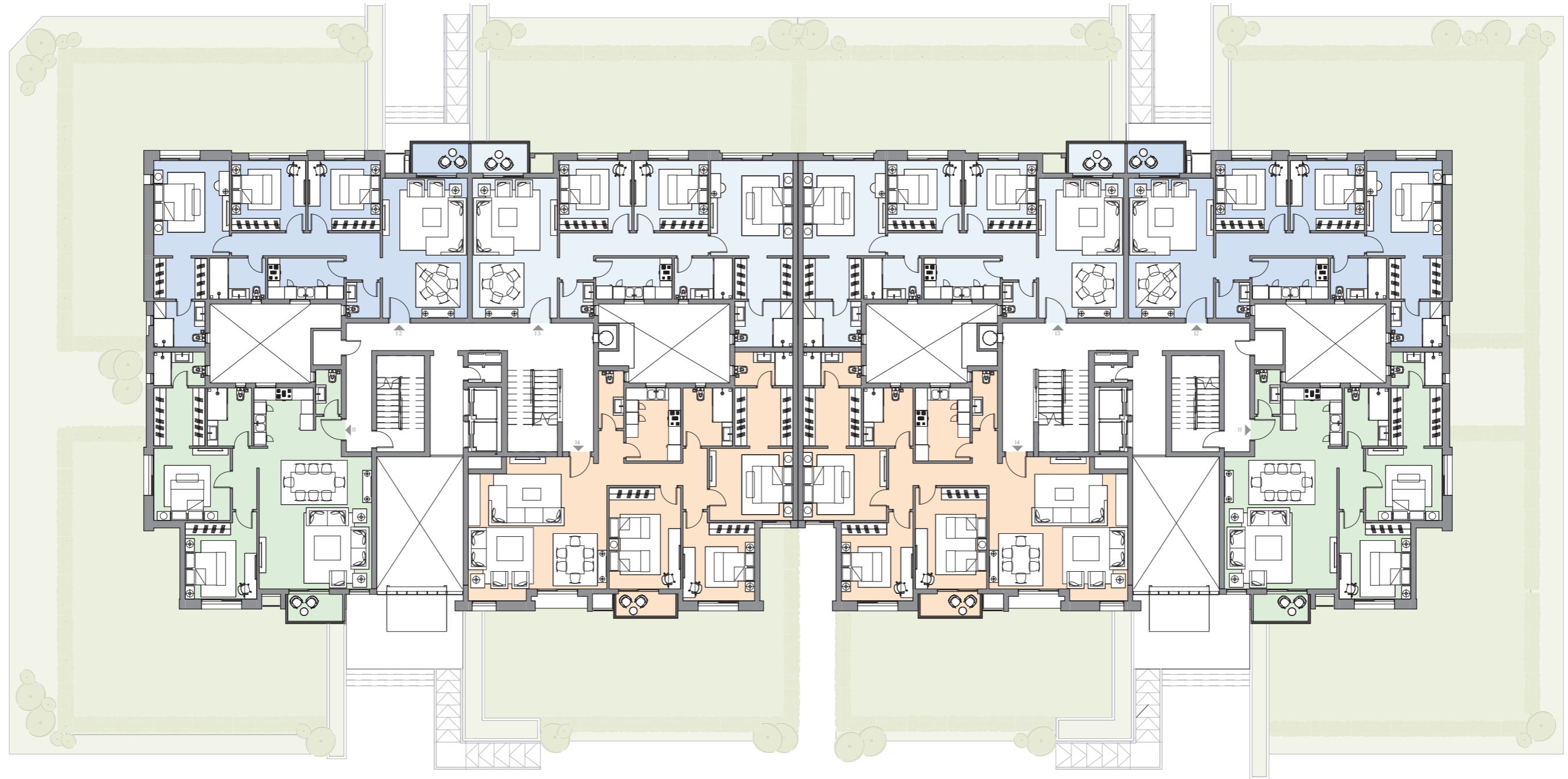
P1

S2

Disclaimer

- All room dimensions are measured to structural elements and exclude wall finishes and construction tolerances.
- All dimensions have been provided by our consultant architects.
- All materials, dimensions and drawings are approximate and information is subject to change without notice.
- Actual area may vary from the stated area.
- Drawings are not to scale.

- The developer reserves the right to make revisions.
- Actual unit areas, front windows, porches, terraces, balconies, loggia and exterior trim detail may vary by elevation styles and its location within the building.
- The unit orientation will be as shown in the parcel layout and not as shown in the floor plans.
- Garden Areas and configuration are subject to change according to the unit's location on the Master Plan.
- Private gardens have access towards the public landscape. Steps, if needed, will be inside the garden boundary.



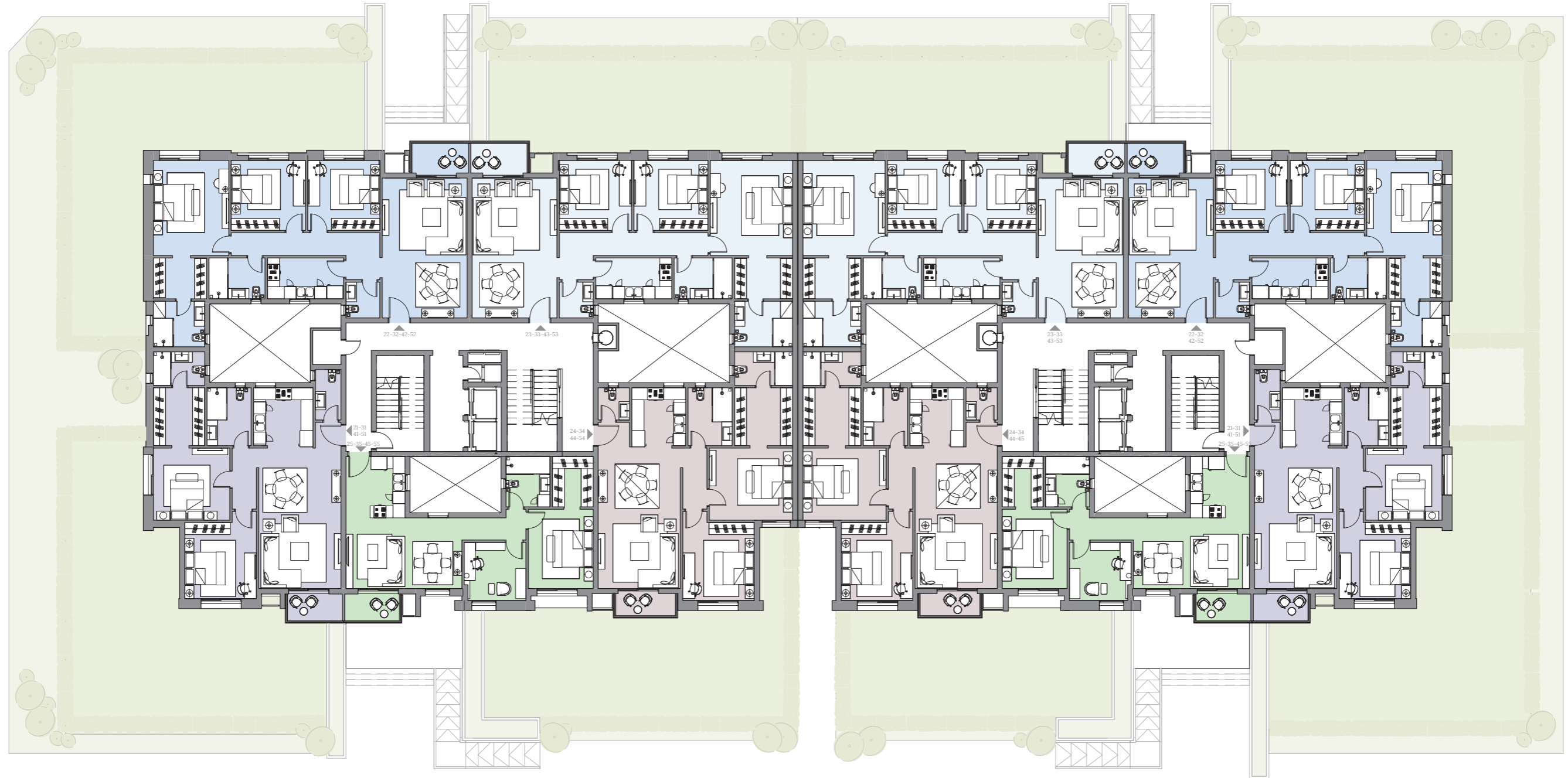
P1

S2

Disclaimer

- All room dimensions are measured to structural elements and exclude wall finishes and construction tolerances.
- All dimensions have been provided by our consultant architects.
- All materials, dimensions and drawings are approximate and information is subject to change without notice.
- Actual area may vary from the stated area.
- Drawings are not to scale.

- The developer reserves the right to make revisions.
- Actual unit areas, front windows, porches, terraces, balconies, loggia and exterior trim detail may vary by elevation styles and its location within the building.
- The unit orientation will be as shown in the parcel layout and not as shown in the floor plans.
- Garden Areas and configuration are subject to change according to the unit's location on the Master Plan.
- Private gardens have access towards the public landscape. Steps, if needed, will be inside the garden boundary.



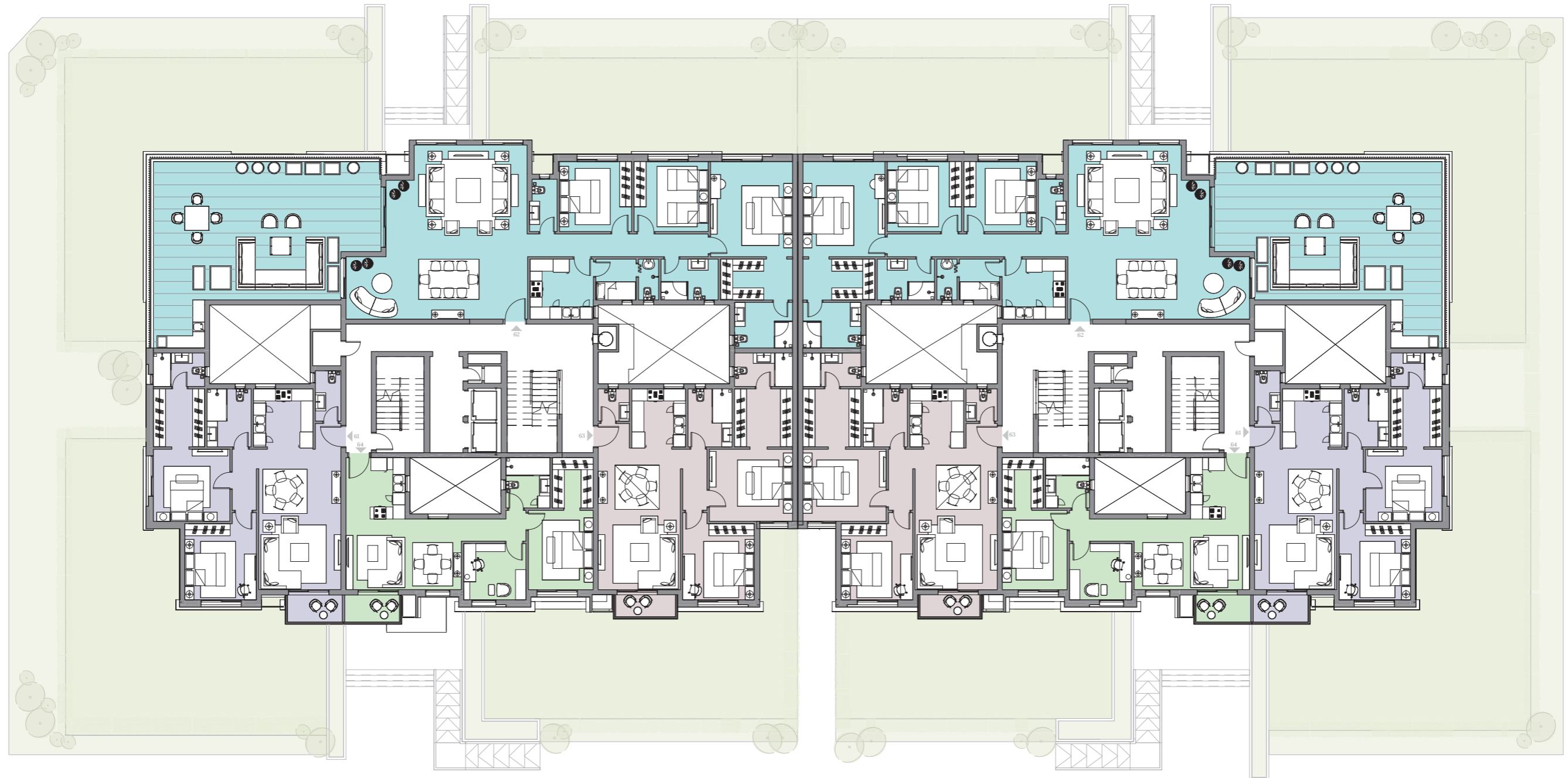
P1

S2

Disclaimer

- All room dimensions are measured to structural elements and exclude wall finishes and construction tolerances.
- All dimensions have been provided by our consultant architects.
- All materials, dimensions and drawings are approximate and information is subject to change without notice.
- Actual area may vary from the stated area.
- Drawings are not to scale.

- The developer reserves the right to make revisions.
- Actual unit areas, front windows, porches, terraces, balconies, loggia and exterior trim detail may vary by elevation styles and its location within the building.
- The unit orientation will be as shown in the parcel layout and not as shown in the floor plans.
- Garden Areas and configuration are subject to change according to the unit's location on the Master Plan.
- Private gardens have access towards the public landscape. Steps, if needed, will be inside the garden boundary.



P1

S2

Disclaimer

- All room dimensions are measured to structural elements and exclude wall finishes and construction tolerances.
- All dimensions have been provided by our consultant architects.
- All materials, dimensions and drawings are approximate and information is subject to change without notice.
- Actual area may vary from the stated area.
- Drawings are not to scale.

- The developer reserves the right to make revisions.
- Actual unit areas, front windows, porches, terraces, balconies, loggia and exterior trim detail may vary by elevation styles and its location within the building.
- The unit orientation will be as shown in the parcel layout and not as shown in the floor plans.
- Garden Areas and configuration are subject to change according to the unit's location on the Master Plan.
- Private gardens have access towards the public landscape. Steps, if needed, will be inside the garden boundary.



	ROOM	DIMENSIONS
01	Reception	3.60x3.60
02	Dining	3.60x3.30
03	Entrance Lobby	1.70x0.95
04	Bedroom	3.70x3.50
05	Master Bedroom	3.75x3.50
06	Dressing room	3.30x1.85
07	Ensuite Bathroom	2.55x2.30
08	Kitchen	3.45x2.15
09	Bathroom	2.15x2.00



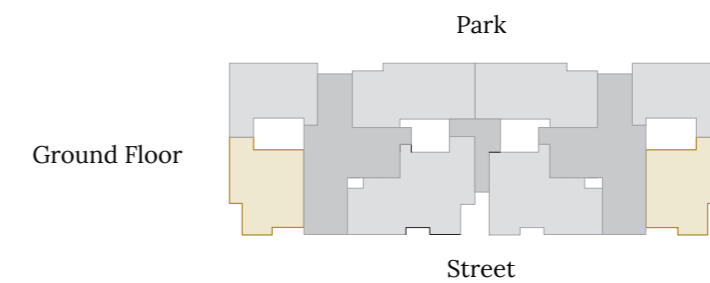
Disclaimer

- All room dimensions are measured to structural elements and exclude wall finishes and construction tolerances.
- All dimensions have been provided by our consultant architects.
- All materials, dimensions and drawings are approximate and information is subject to change without notice.
- Actual area may vary from the stated area.
- Drawings are not to scale.

- The developer reserves the right to make revisions.
- Actual unit areas, front windows, porches, terraces, balconies, loggia and exterior trim detail may vary by elevation styles and its location within the building.
- The unit orientation will be as shown in the parcel layout and not as shown in the floor plans.
- Garden Areas and configuration are subject to change according to the unit's location on the Master Plan.
- Private gardens have access towards the public landscape. Steps, if needed, will be inside the garden boundary.



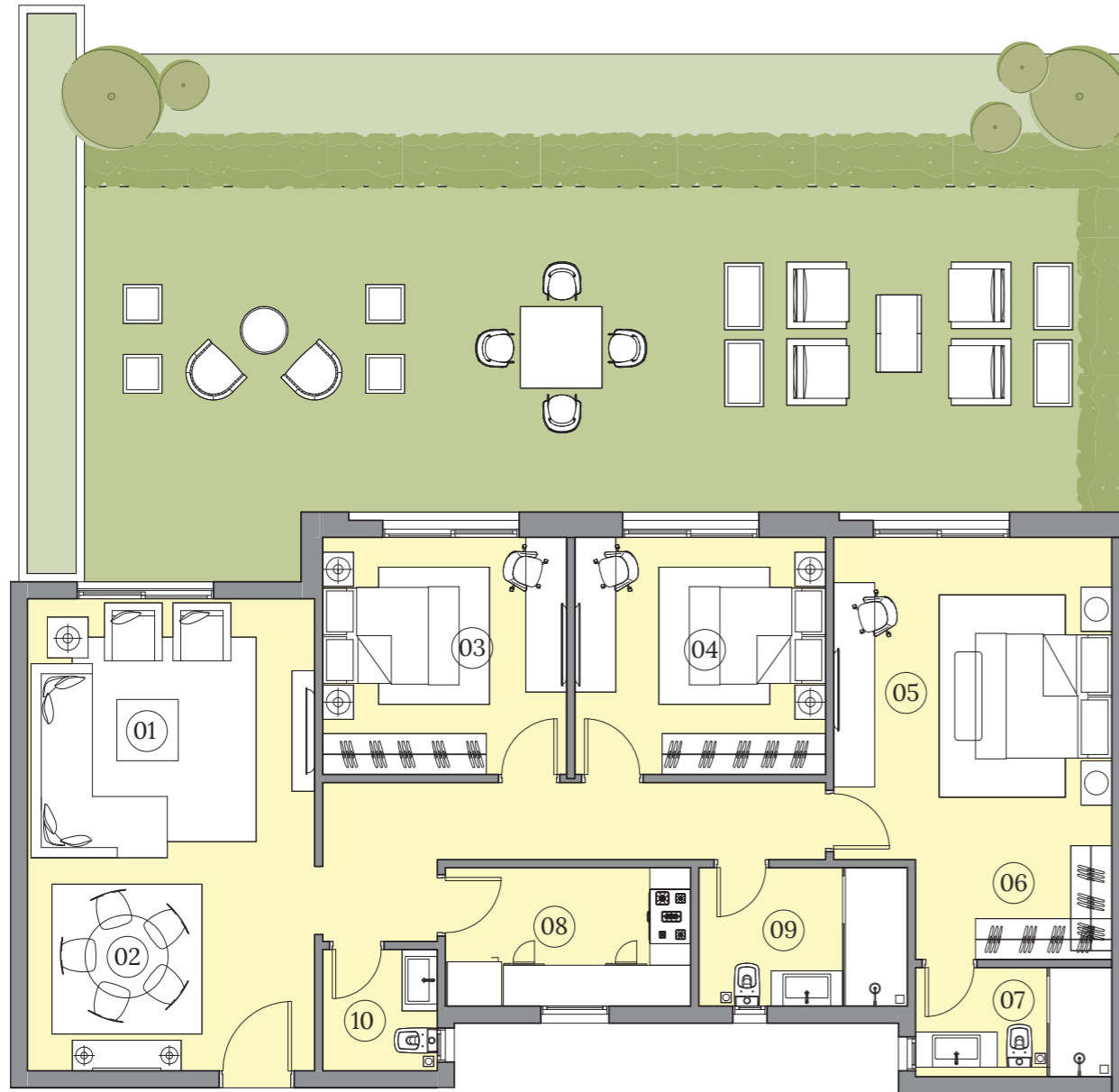
	ROOM	DIMENSIONS
01	Reception	4.25X4.00
02	Dining	4.10X3.00
03	Entrance Lobby	3.00X1.30
04	Bedroom	4.30X3.55
05	Master Bedroom	3.80X3.60
06	Dressing room	2.90X2.55
07	Ensuite Bathroom	2.55X1.65
08	Kitchen	2.95X2.85
09	Bathroom	2.90X2.20



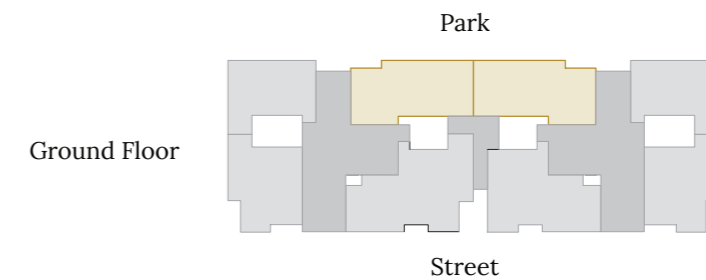
Disclaimer

- All room dimensions are measured to structural elements and exclude wall finishes and construction tolerances.
- All dimensions have been provided by our consultant architects.
- All materials, dimensions and drawings are approximate and information is subject to change without notice.
- Actual area may vary from the stated area.
- Drawings are not to scale.

- The developer reserves the right to make revisions.
- Actual unit areas, front windows, porches, terraces, balconies, loggia and exterior trim detail may vary by elevation styles and its location within the building.
- The unit orientation will be as shown in the parcel layout and not as shown in the floor plans.
- Garden Areas and configuration are subject to change according to the unit's location on the Master Plan.
- Private gardens have access towards the public landscape. Steps, if needed, will be inside the garden boundary.



	ROOM	DIMENSIONS
01	Reception	4.25X4.30
02	Dining	4.25X2.60
03	Bedroom	3.60X3.50
04	Bedroom	3.70X3.50
05	Master Bedroom	4.55X4.10
06	Dressing room	2.90X1.65
07	Ensuite Bathroom	2.90X1.60
08	Kitchen	3.60X2.00
09	Bathroom	3.10X2.00
10	Guest Toilet	1.80X1.70



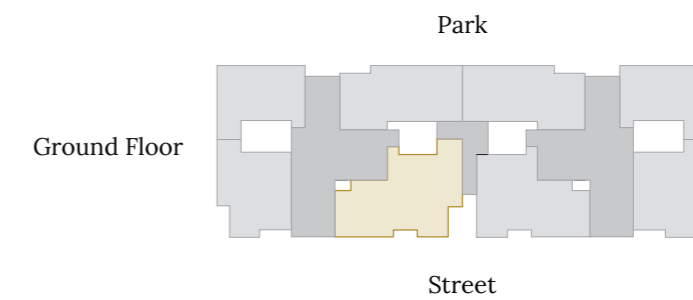
Disclaimer

- All room dimensions are measured to structural elements and exclude wall finishes and construction tolerances.
- All dimensions have been provided by our consultant architects.
- All materials, dimensions and drawings are approximate and information is subject to change without notice.
- Actual area may vary from the stated area.
- Drawings are not to scale.

- The developer reserves the right to make revisions.
- Actual unit areas, front windows, porches, terraces, balconies, loggia and exterior trim detail may vary by elevation styles and its location within the building.
- The unit orientation will be as shown in the parcel layout and not as shown in the floor plans.
- Garden Areas and configuration are subject to change according to the unit's location on the Master Plan.
- Private gardens have access towards the public landscape. Steps, if needed, will be inside the garden boundary.



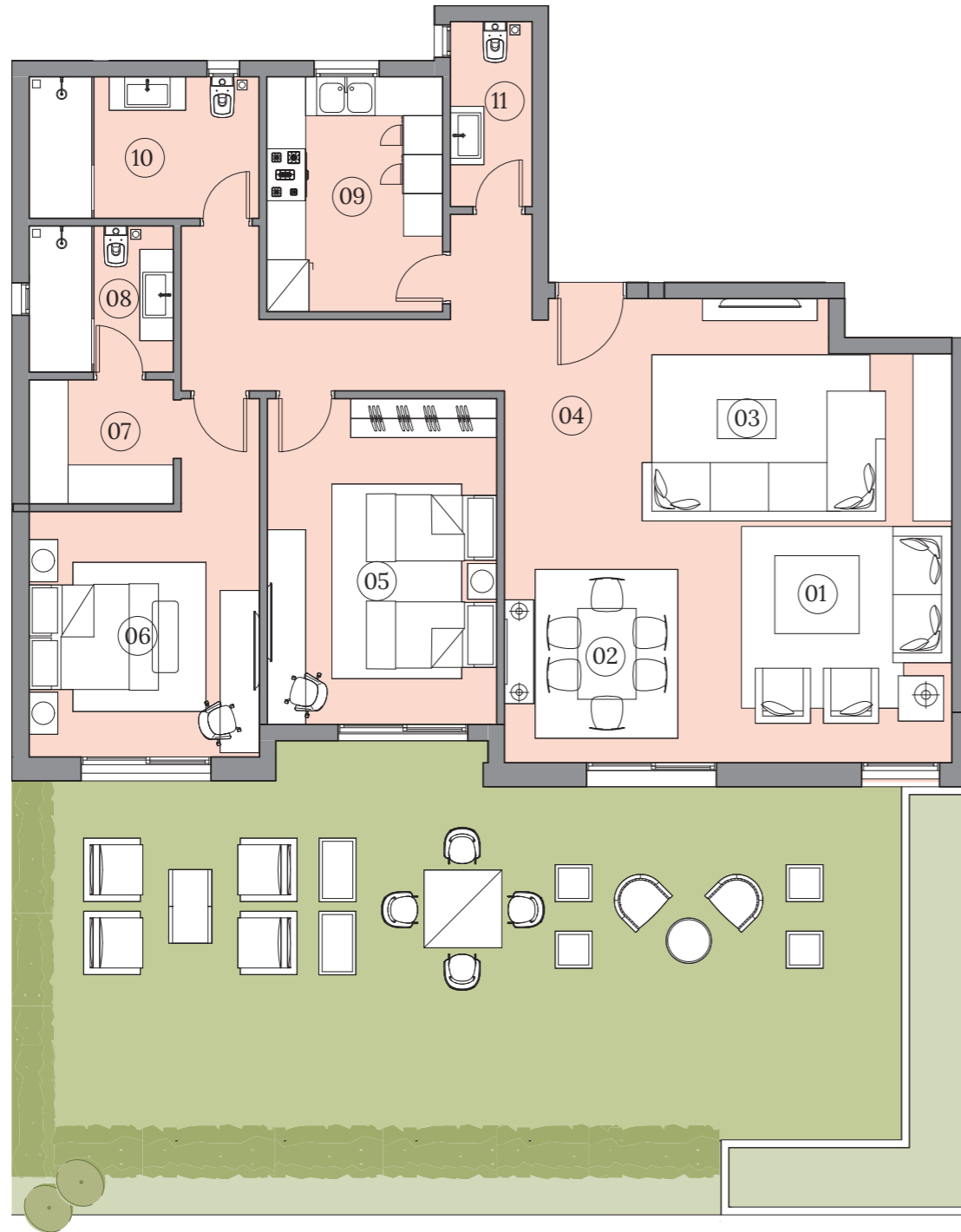
ROOM	DIMENSIONS
01 Reception	3.85X3.65
02 Dining	3.05X3.05
03 Living Area	4.80X3.50
04 Entrance Lobby	3.50x2.10
05 Bedroom	5.00x3.55
06 Bedroom	3.90x3.55
07 Master Bedroom	4.15x3.60
08 Dressing room	2.90x2.90
09 Ensuite Bathroom	2.90x1.65
10 Kitchen	3.60x2.70
11 Bathroom	2.90x2.45
12 Guest Toilet	2.85x1.25



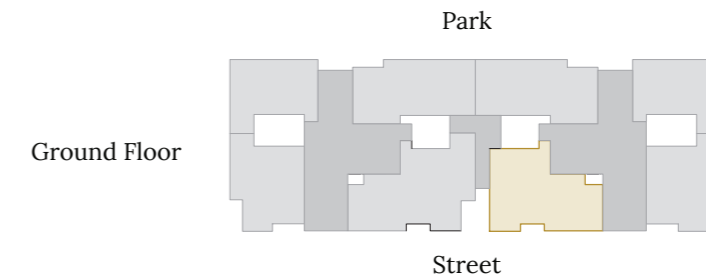
Disclaimer

- All room dimensions are measured to structural elements and exclude wall finishes and construction tolerances.
- All dimensions have been provided by our consultant architects.
- All materials, dimensions and drawings are approximate and information is subject to change without notice.
- Actual area may vary from the stated area.
- Drawings are not to scale.

- The developer reserves the right to make revisions.
- Actual unit areas, front windows, porches, terraces, balconies, loggia and exterior trim detail may vary by elevation styles and its location within the building.
- The unit orientation will be as shown in the parcel layout and not as shown in the floor plans.
- Garden Areas and configuration are subject to change according to the unit's location on the Master Plan.
- Private gardens have access towards the public landscape. Steps, if needed, will be inside the garden boundary.



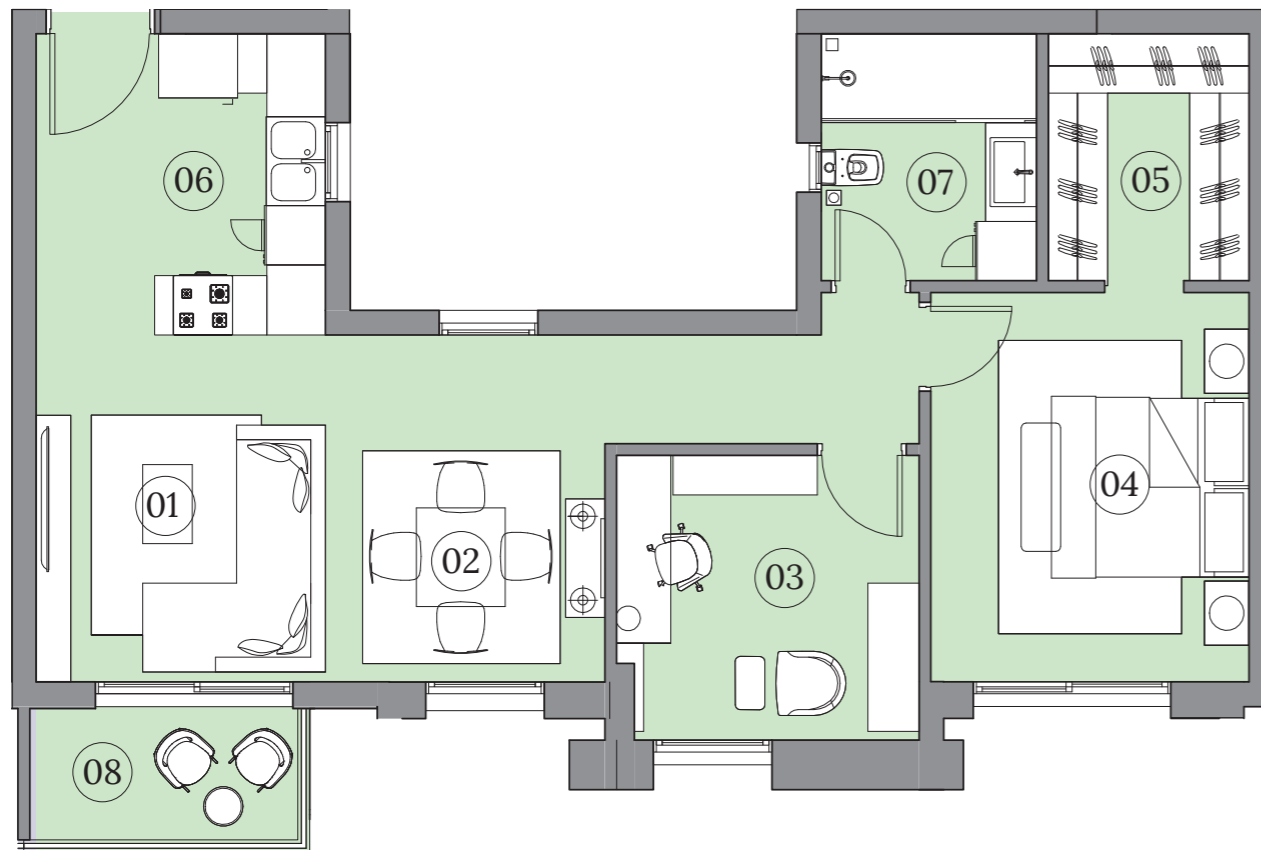
	ROOM	DIMENSIONS
01	Reception	3.85X3.65
02	Dining	3.05X3.05
03	Living Area	4.80X3.50
04	Entrance Lobby	3.50x2.10
05	Bedroom	5.00X3.55
06	Master Bedroom	3.80X3.55
07	Dressing room	2.20X1.90
08	Ensuite Bathroom	2.20X2.25
09	Kitchen	3.60X2.70
10	Bathroom	3.55X2.20
11	Guest Toilet	2.85X1.25



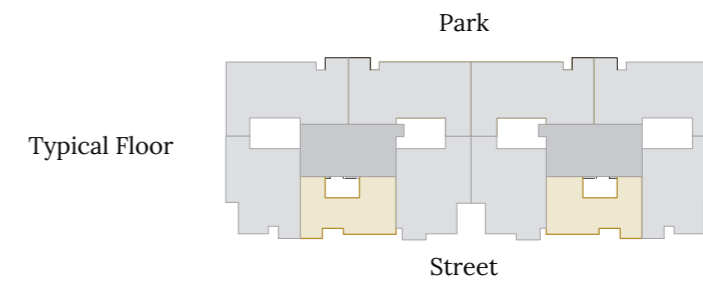
Disclaimer

- All room dimensions are measured to structural elements and exclude wall finishes and construction tolerances.
- All dimensions have been provided by our consultant architects.
- All materials, dimensions and drawings are approximate and information is subject to change without notice.
- Actual area may vary from the stated area.
- Drawings are not to scale.

- The developer reserves the right to make revisions.
- Actual unit areas, front windows, porches, terraces, balconies, loggia and exterior trim detail may vary by elevation styles and its location within the building.
- The unit orientation will be as shown in the parcel layout and not as shown in the floor plans.
- Garden Areas and configuration are subject to change according to the unit's location on the Master Plan.
- Private gardens have access towards the public landscape. Steps, if needed, will be inside the garden boundary.



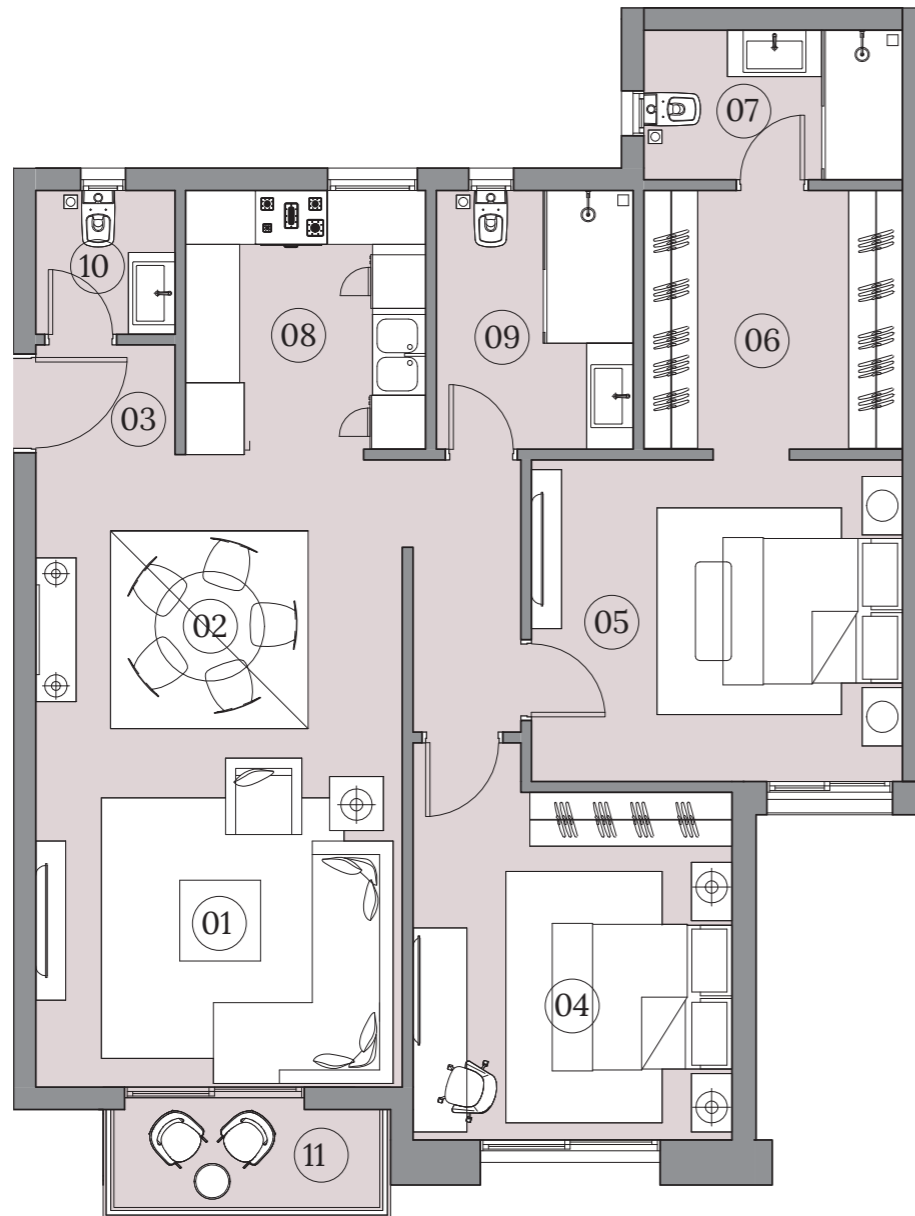
	ROOM	DIMENSIONS
01	Reception	3.50x3.25
02	Dining	2.45x2.35
03	Study room	3.10x2.90
04	Master Bedroom	3.95x3.25
05	Dressing room	2.50x2.00
06	Kitchen	3.00x1.75
07	Bathroom	2.50x2.20
08	Terrace	2.85x1.60



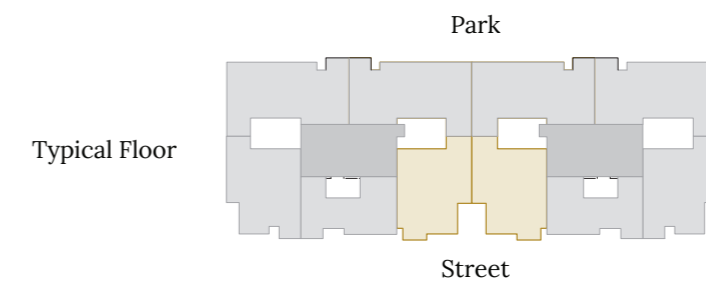
Disclaimer

- All room dimensions are measured to structural elements and exclude wall finishes and construction tolerances.
- All dimensions have been provided by our consultant architects.
- All materials, dimensions and drawings are approximate and information is subject to change without notice.
- Actual area may vary from the stated area.
- Drawings are not to scale.

- The developer reserves the right to make revisions.
- Actual unit areas, front windows, porches, terraces, balconies, loggia and exterior trim detail may vary by elevation styles and its location within the building.
- The unit orientation will be as shown in the parcel layout and not as shown in the floor plans.
- Garden Areas and configuration are subject to change according to the unit's location on the Master Plan.
- Private gardens have access towards the public landscape. Steps, if needed, will be inside the garden boundary.



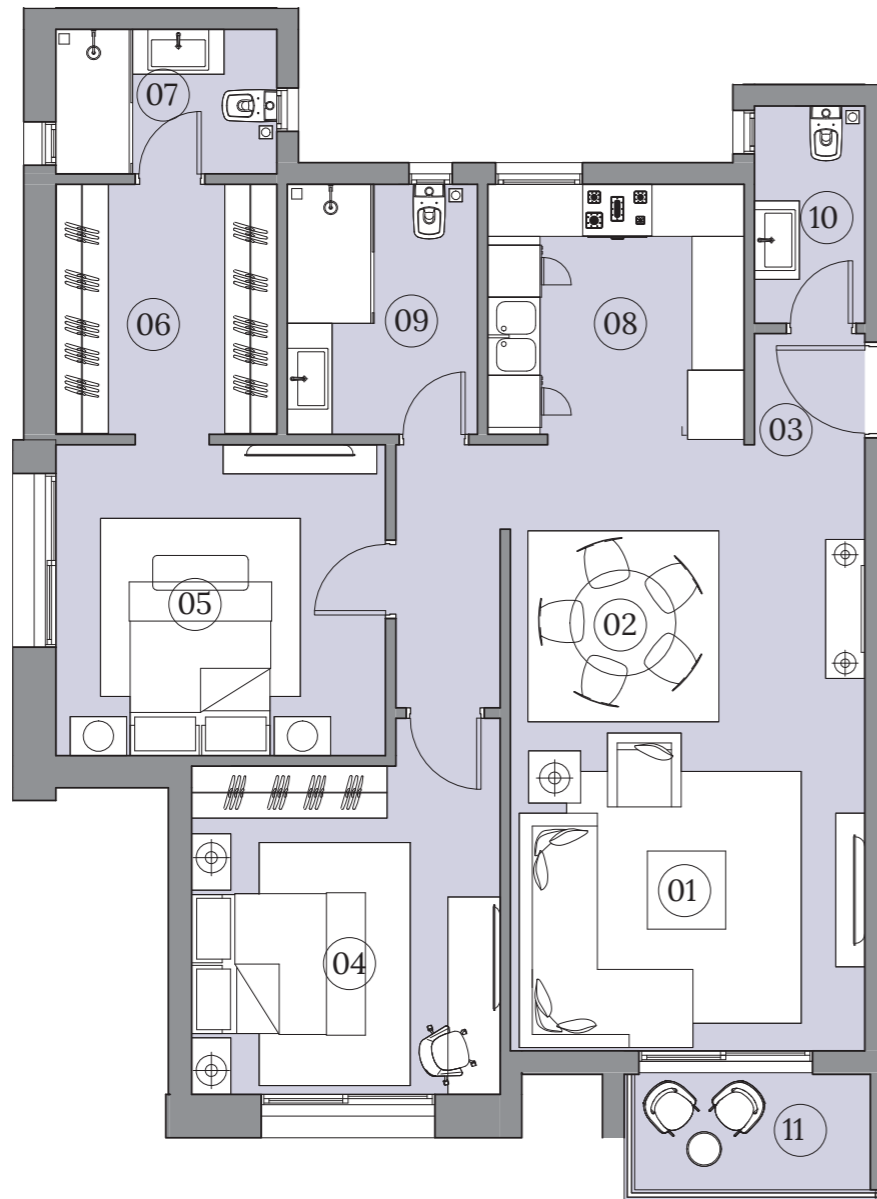
	ROOM	DIMENSIONS
01	Reception	4.10X4.00
02	Dining	4.10X3.00
03	Entrance Lobby	1.55x1.25
04	Bedroom	4.40x3.55
05	Master Bedroom	4.15x3.60
06	Dressing room	2.90x2.90
07	Ensuite Bathroom	2.90x1.95
08	Kitchen	2.95x2.65
09	Bathroom	2.90x2.20
10	Guest Toilet	1.60x1.55
11	Terrace	3.15x1.15



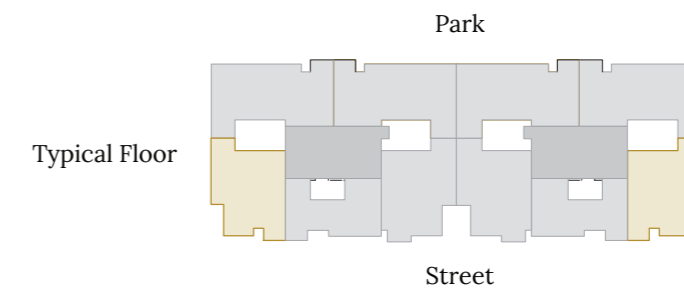
Disclaimer

- All room dimensions are measured to structural elements and exclude wall finishes and construction tolerances.
- All dimensions have been provided by our consultant architects.
- All materials, dimensions and drawings are approximate and information is subject to change without notice.
- Actual area may vary from the stated area.
- Drawings are not to scale.

- The developer reserves the right to make revisions.
- Actual unit areas, front windows, porches, terraces, balconies, loggia and exterior trim detail may vary by elevation styles and its location within the building.
- The unit orientation will be as shown in the parcel layout and not as shown in the floor plans.
- Garden Areas and configuration are subject to change according to the unit's location on the Master Plan.
- Private gardens have access towards the public landscape. Steps, if needed, will be inside the garden boundary.



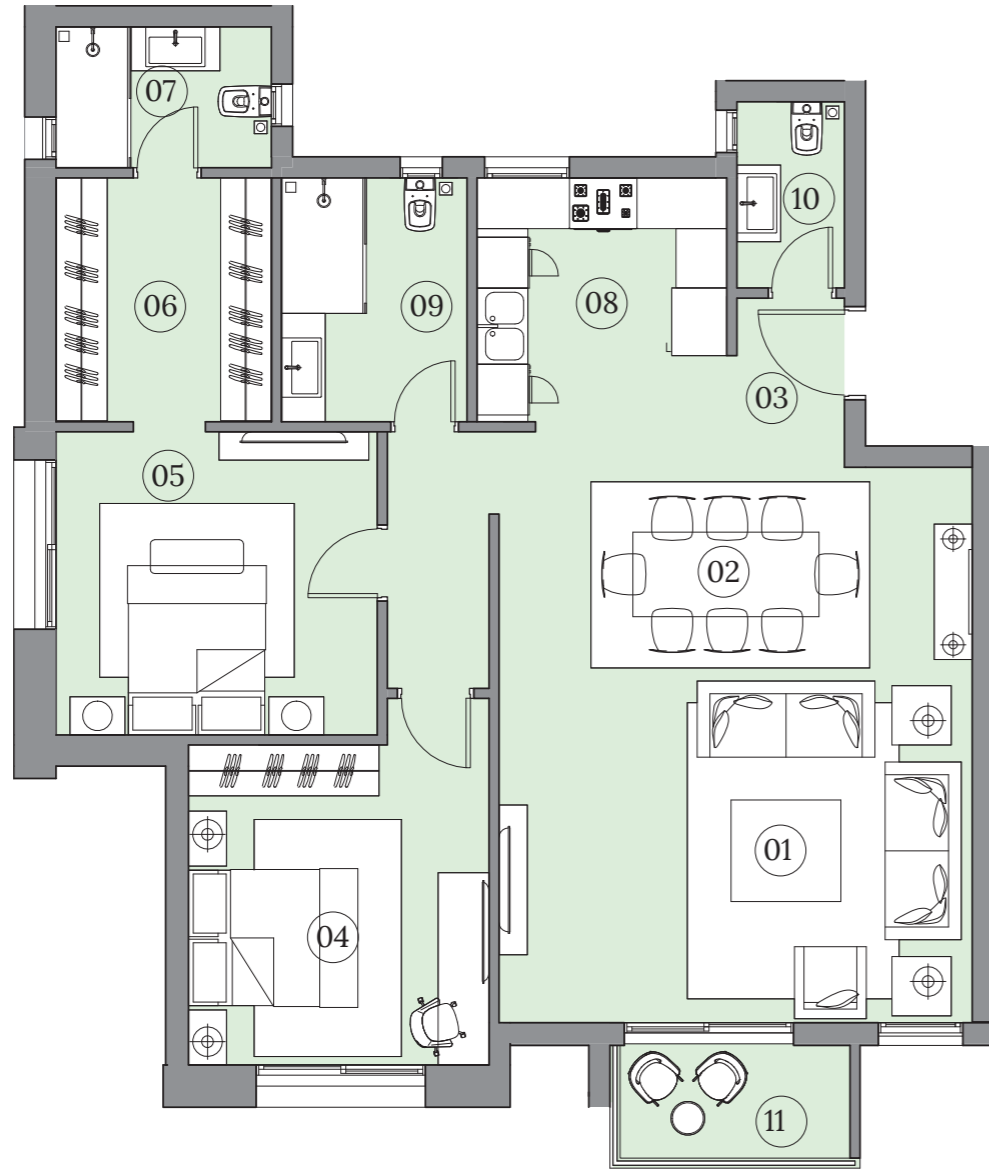
	ROOM	DIMENSIONS
01	Reception	4.10x3.65
02	Dining	4.10x3.30
03	Entrance Lobby	1.30x1.30
04	Bedroom	4.30x3.55
05	Master Bedroom	3.80x3.60
06	Dressing room	2.90x2.55
07	Ensuite Bathroom	2.55x1.65
08	Kitchen	2.95x2.85
09	Bathroom	2.90x2.20
10	Guest Toilet	2.50x1.25
11	Terrace	2.80x1.35



Disclaimer

- All room dimensions are measured to structural elements and exclude wall finishes and construction tolerances.
- All dimensions have been provided by our consultant architects.
- All materials, dimensions and drawings are approximate and information is subject to change without notice.
- Actual area may vary from the stated area.
- Drawings are not to scale.

- The developer reserves the right to make revisions.
- Actual unit areas, front windows, porches, terraces, balconies, loggia and exterior trim detail may vary by elevation styles and its location within the building.
- The unit orientation will be as shown in the parcel layout and not as shown in the floor plans.
- Garden Areas and configuration are subject to change according to the unit's location on the Master Plan.
- Private gardens have access towards the public landscape. Steps, if needed, will be inside the garden boundary.



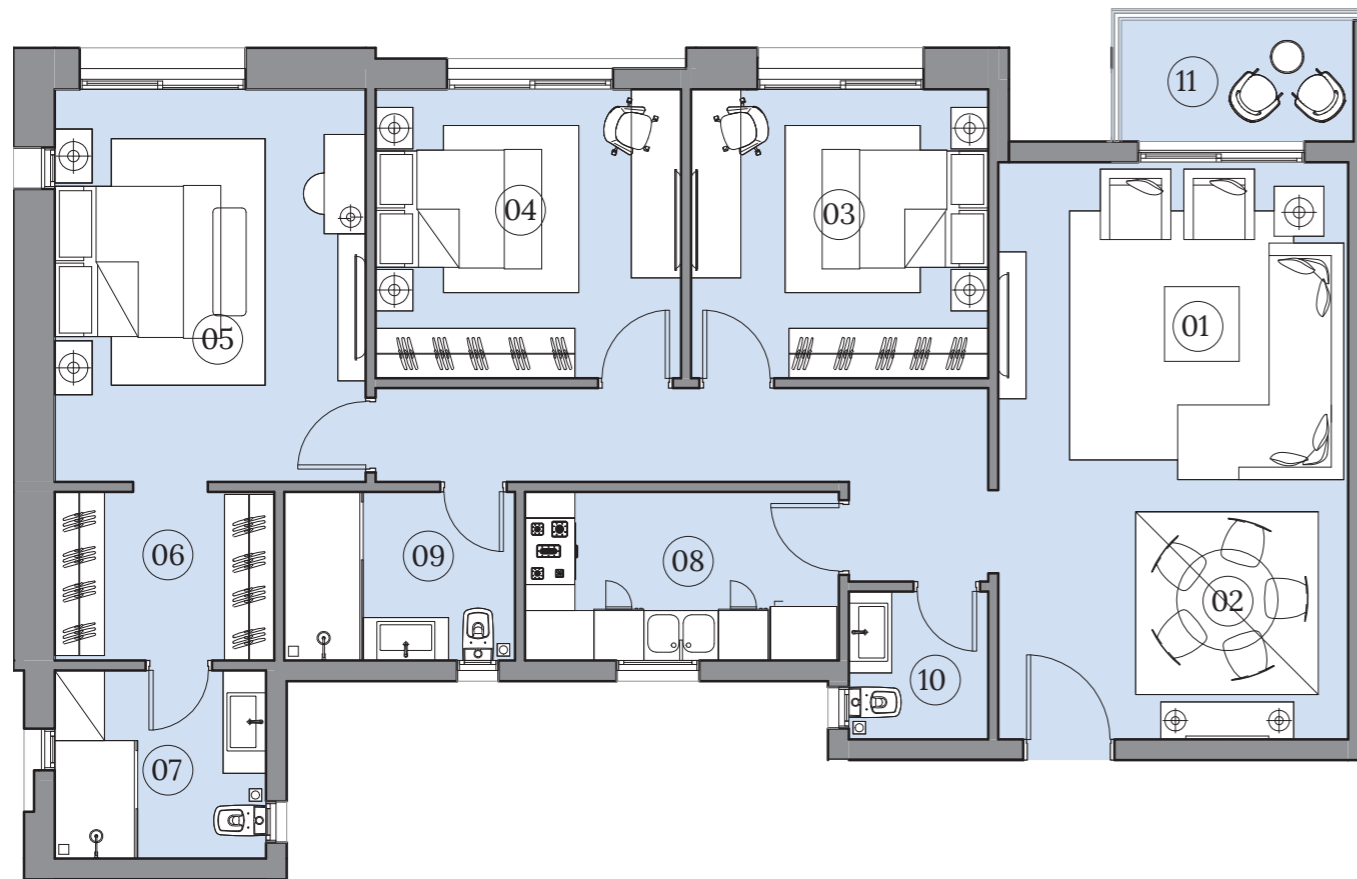
	ROOM	DIMENSIONS
01	Reception	5.60x4.05
02	Dining	5.60x3.00
03	Entrance Lobby	1.50x1.30
04	Bedroom	4.30x3.55
05	Master Bedroom	3.80x3.60
06	Dressing room	2.90x2.55
07	Ensuite Bathroom	2.55x1.65
08	Kitchen	3.00x2.95
09	Bathroom	2.90x2.20
10	Guest Toilet	2.20x1.30
11	Terrace	2.75x1.40



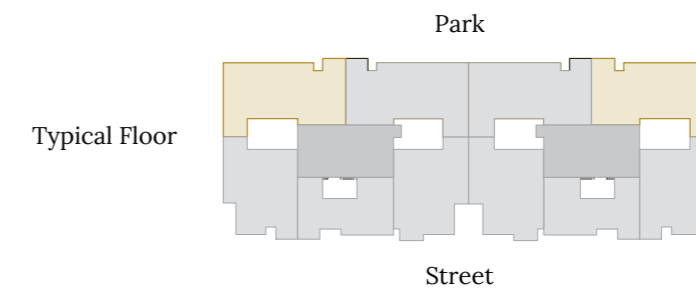
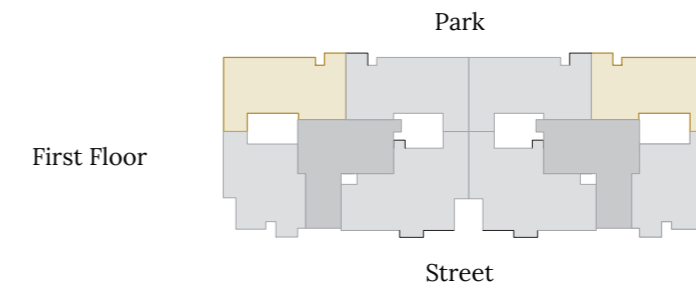
Disclaimer

- All room dimensions are measured to structural elements and exclude wall finishes and construction tolerances.
- All dimensions have been provided by our consultant architects.
- All materials, dimensions and drawings are approximate and information is subject to change without notice.
- Actual area may vary from the stated area.
- Drawings are not to scale.

- The developer reserves the right to make revisions.
- Actual unit areas, front windows, porches, terraces, balconies, loggia and exterior trim detail may vary by elevation styles and its location within the building.
- The unit orientation will be as shown in the parcel layout and not as shown in the floor plans.
- Garden Areas and configuration are subject to change according to the unit's location on the Master Plan.
- Private gardens have access towards the public landscape. Steps, if needed, will be inside the garden boundary.



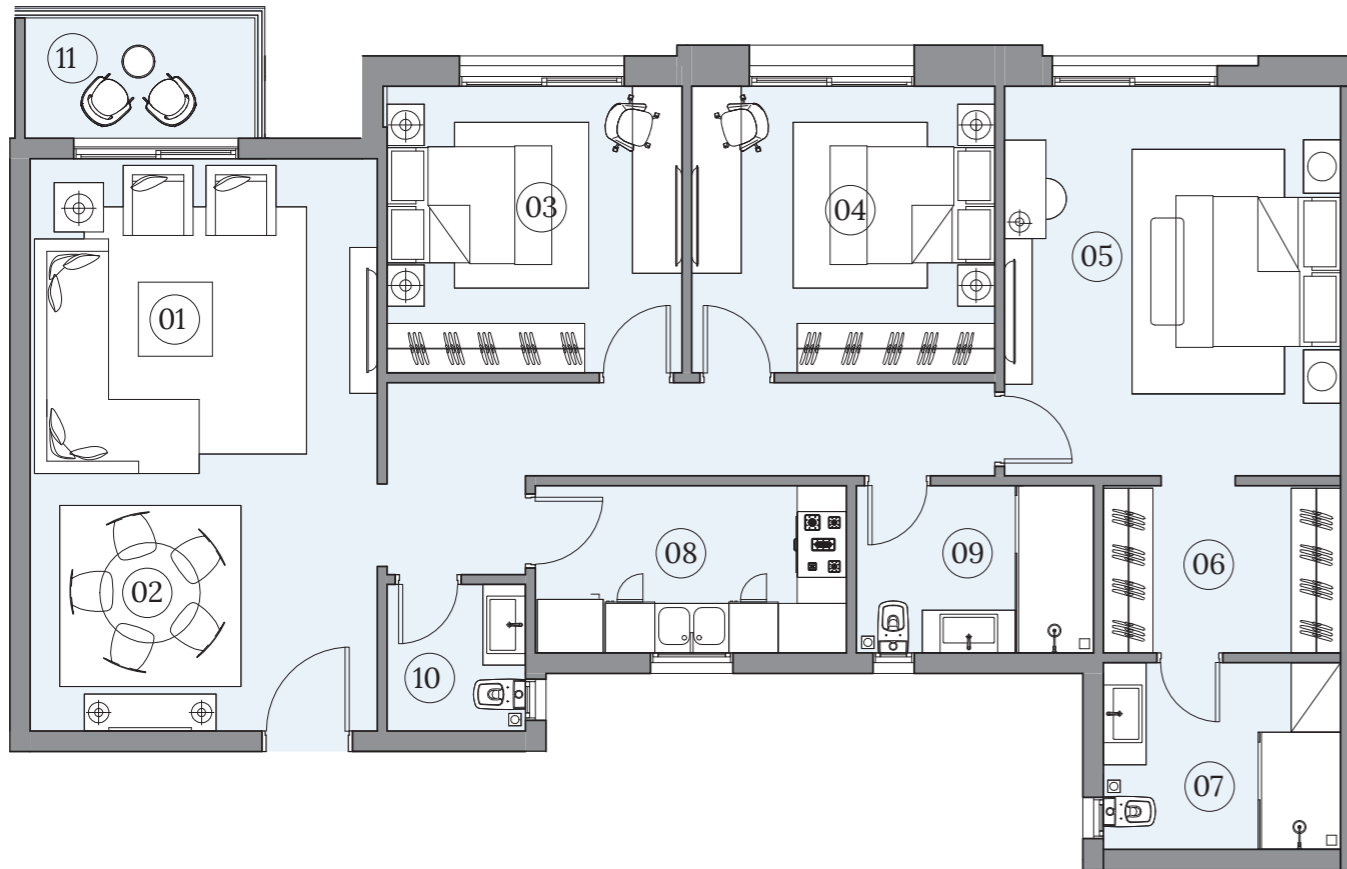
	ROOM	DIMENSIONS
01	Reception	4.20X4.20
02	Dining	4.20X2.75
03	Bedroom	3.60X3.50
04	Bedroom	3.70X3.50
05	Master Bedroom	4.75X3.75
06	Dressing room	2.65X2.00
07	Ensuite Bathroom	2.55X2.30
08	Kitchen	3.80X2.05
09	Bathroom	2.80X2.05
10	Guest Toilet	1.80X1.70
11	Terrace	2.85x1.50



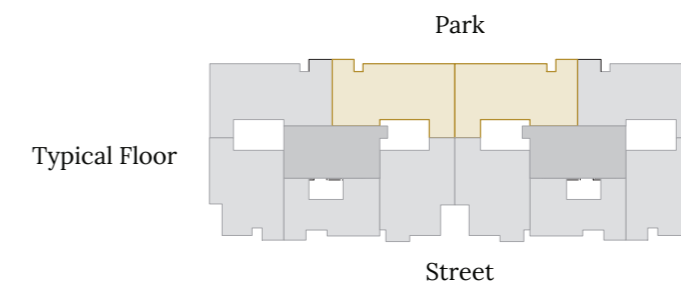
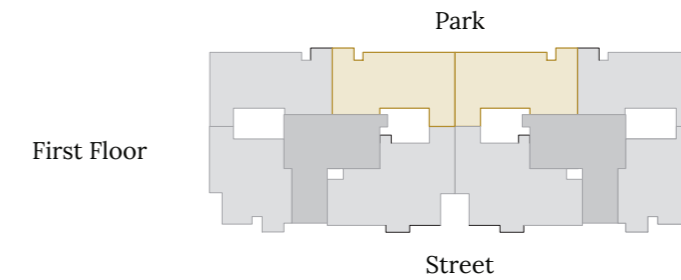
Disclaimer

- All room dimensions are measured to structural elements and exclude wall finishes and construction tolerances.
- All dimensions have been provided by our consultant architects.
- All materials, dimensions and drawings are approximate and information is subject to change without notice.
- Actual area may vary from the stated area.
- Drawings are not to scale.

- The developer reserves the right to make revisions.
- Actual unit areas, front windows, porches, terraces, balconies, loggia and exterior trim detail may vary by elevation styles and its location within the building.
- The unit orientation will be as shown in the parcel layout and not as shown in the floor plans.
- Garden Areas and configuration are subject to change according to the unit's location on the Master Plan.
- Private gardens have access towards the public landscape. Steps, if needed, will be inside the garden boundary.



	ROOM	DIMENSIONS
01	Reception	4.20x4.20
02	Dining	4.20x2.75
03	Bedroom	3.60x3.50
04	Bedroom	3.70x3.50
05	Master Bedroom	4.75x4.10
06	Dressing room	2.90x2.05
07	Ensuite Bathroom	2.90x2.30
08	Kitchen	3.80x2.05
09	Bathroom	2.90x2.05
10	Guest Toilet	1.80x1.70
11	Terrace	2.85x1.50



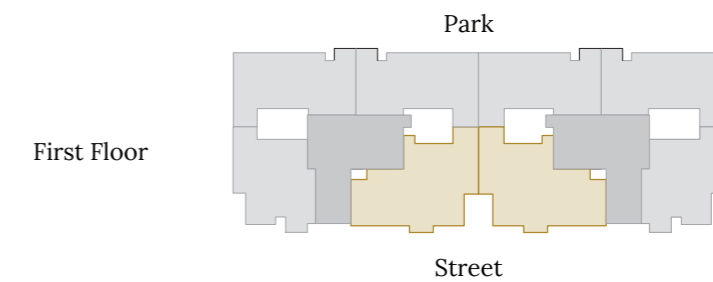
Disclaimer

- All room dimensions are measured to structural elements and exclude wall finishes and construction tolerances.
- All dimensions have been provided by our consultant architects.
- All materials, dimensions and drawings are approximate and information is subject to change without notice.
- Actual area may vary from the stated area.
- Drawings are not to scale.

- The developer reserves the right to make revisions.
- Actual unit areas, front windows, porches, terraces, balconies, loggia and exterior trim detail may vary by elevation styles and its location within the building.
- The unit orientation will be as shown in the parcel layout and not as shown in the floor plans.
- Garden Areas and configuration are subject to change according to the unit's location on the Master Plan.
- Private gardens have access towards the public landscape. Steps, if needed, will be inside the garden boundary.



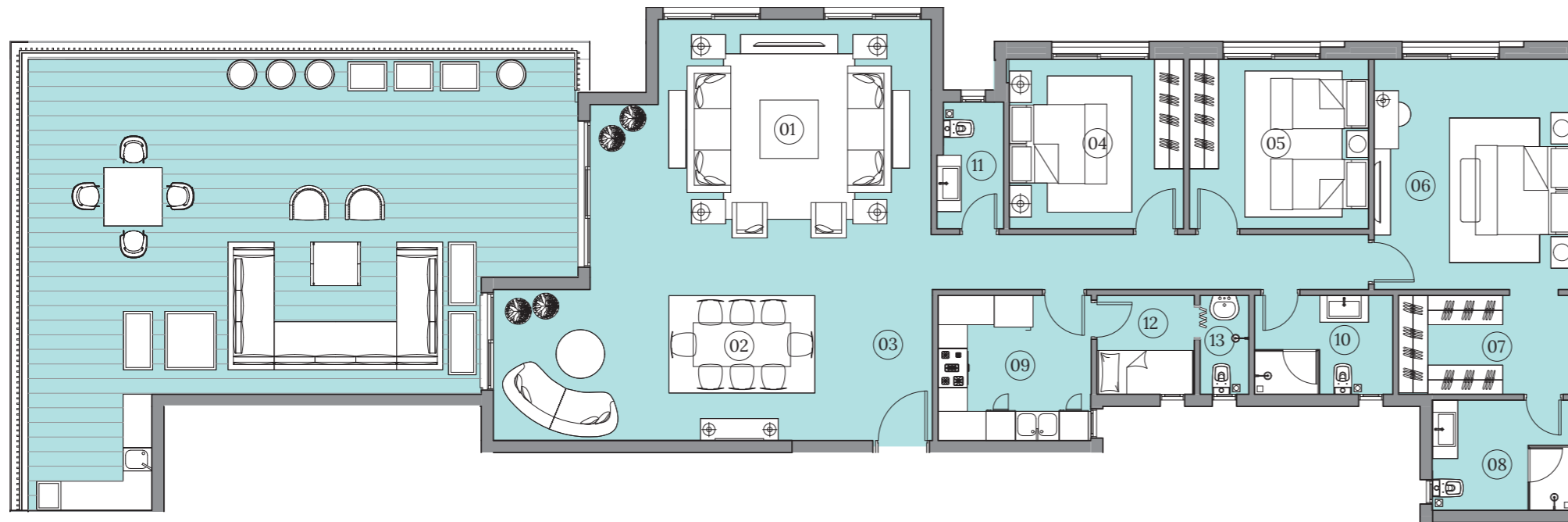
	ROOM	DIMENSIONS
01	Reception	3.85X3.65
02	Dining	3.05X3.05
03	Living Area	4.80X3.50
04	Entrance Lobby	3.50x2.10
05	Bedroom	5.00x3.55
06	Bedroom	3.90x3.55
07	Master Bedroom	4.15x3.60
08	Dressing room	2.90x2.90
09	Ensuite Bathroom	2.90x1.65
10	Kitchen	3.60x2.70
11	Bathroom	2.90x2.45
12	Guest Toilet	2.85x1.25
13	Terrace	3.14x1.15



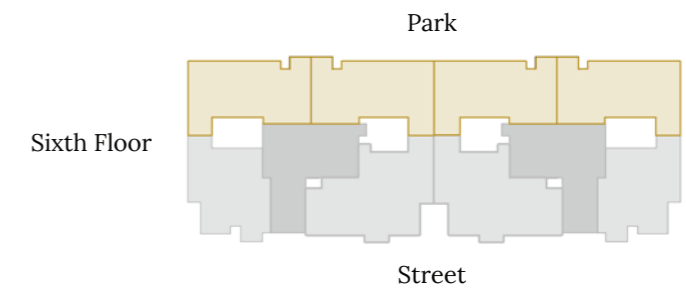
Disclaimer

- All room dimensions are measured to structural elements and exclude wall finishes and construction tolerances.
- All dimensions have been provided by our consultant architects.
- All materials, dimensions and drawings are approximate and information is subject to change without notice.
- Actual area may vary from the stated area.
- Drawings are not to scale.

- The developer reserves the right to make revisions.
- Actual unit areas, front windows, porches, terraces, balconies, loggia and exterior trim detail may vary by elevation styles and its location within the building.
- The unit orientation will be as shown in the parcel layout and not as shown in the floor plans.
- Garden Areas and configuration are subject to change according to the unit's location on the Master Plan.
- Private gardens have access towards the public landscape. Steps, if needed, will be inside the garden boundary.



ROOM	DIMENSIONS	
01	Reception	7.00x5.70
02	Dining	6.60x3.00
03	Entrance Lobby	3.10x2.40
04	Bedroom	3.60x3.50
05	Bedroom	3.70x3.50
06	Master Bedroom	4.75x4.10
07	Dressing room	3.60x2.05
08	Ensuite Bathroom	2.90x2.30
09	Kitchen	3.00x3.15
10	Bathroom	2.85x2.05
11	Guest Toilet	2.60x1.35
12	Maid's room	2.05x2.00
13	Maid's Toilet	2.05x1.00



Disclaimer

- All room dimensions are measured to structural elements and exclude wall finishes and construction tolerances.
- All dimensions have been provided by our consultant architects.
- All materials, dimensions and drawings are approximate and information is subject to change without notice.
- Actual area may vary from the stated area.
- Drawings are not to scale.

- The developer reserves the right to make revisions.
- Actual unit areas, front windows, porches, terraces, balconies, loggia and exterior trim detail may vary by elevation styles and its location within the building.
- The unit orientation will be as shown in the parcel layout and not as shown in the floor plans.
- Garden Areas and configuration are subject to change according to the unit's location on the Master Plan.
- Private gardens have access towards the public landscape. Steps, if needed, will be inside the garden boundary.