



ALL EYES ON YOU

CityHall
NEW CAIRO

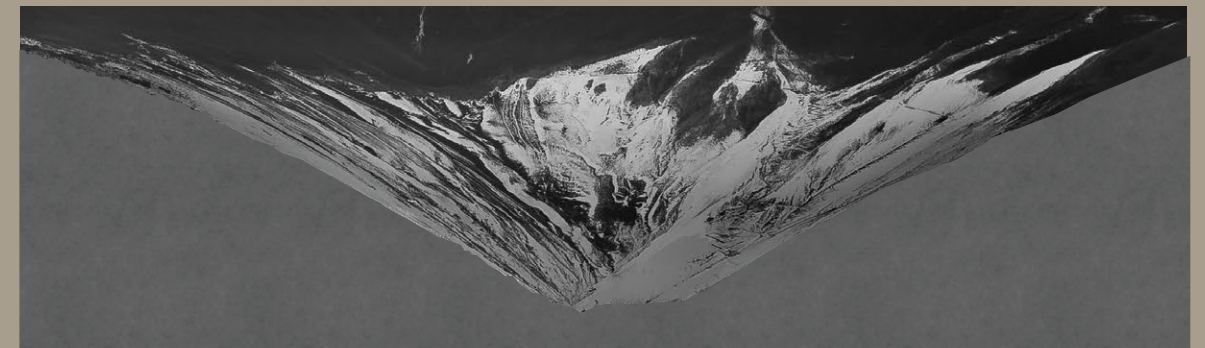
CITY HALL

NEW CAIRO

Brought to you by SERAC Developments



DEVELOPER



CityHall

NEW CAIRO

**A mixed use development diffusing
practicality and ultra-modern conveniences**





Inspired by the delicate beauty and glamour of style, that are simple with a "streamlined look", accessibility and proximity, unified with modern and state-of-the-art-models within eye-catching dazzling and urbane architectural elegances....

**The Enduring Art
of Well-Living.**

From The Definition of City Hall:



The chief administrative building of a city - It is a life of luxury, proximity and convenience - where state of the art facilities and conveniences meet.

Wake your senses and overlook the most central location in New Cairo mesmerizing the horizon of the futuristic city within a modern inspired mixed-use development with all the elements of nature and seamless designs to enjoy a life of excellence with a prime development complemented by well-manicured facilities in the heart of New Cairo.

Diffusing A Central Location

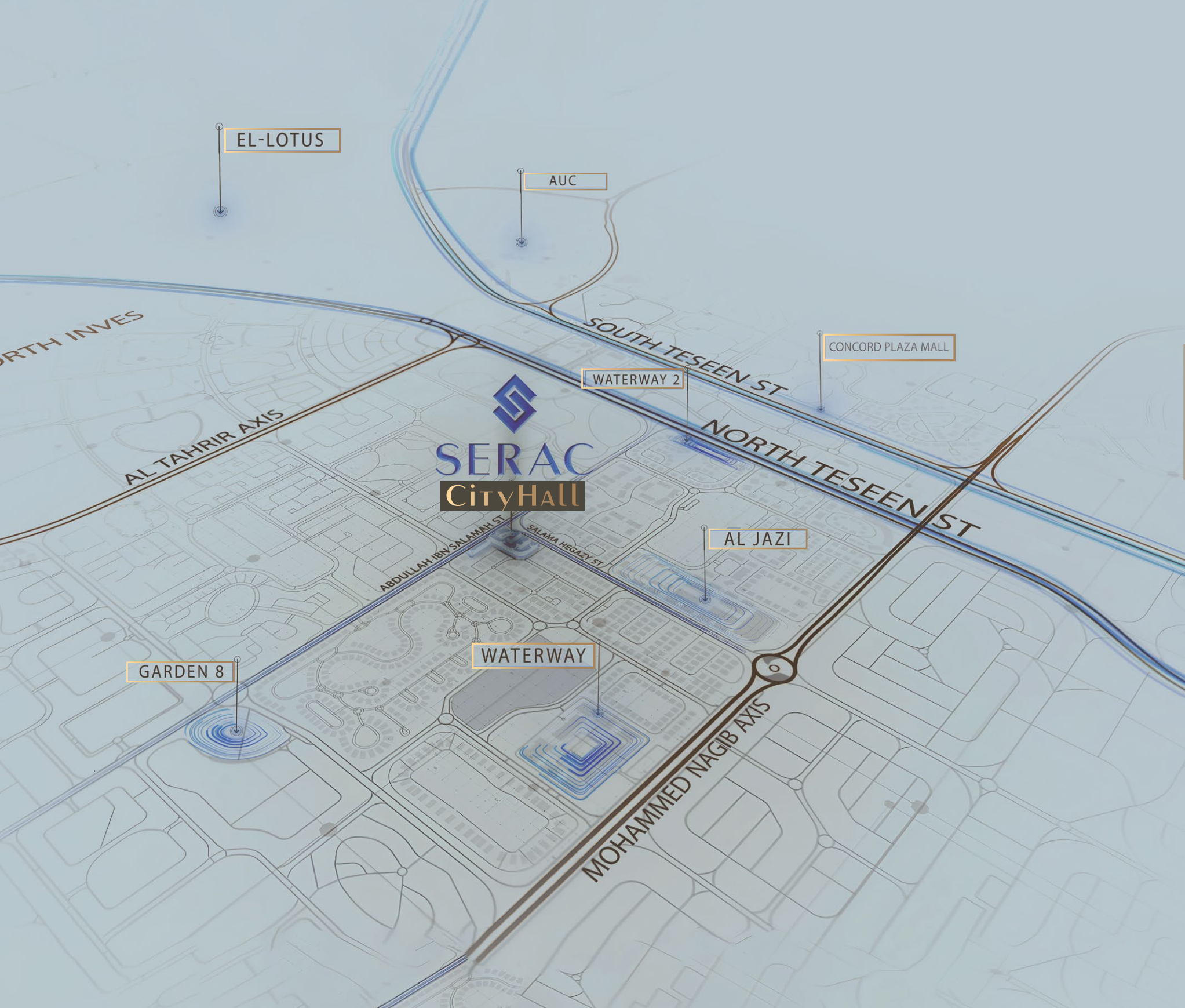


CITYHALL

is molded along the idyllic location of the
New Cairo

Only a few minutes away from idyllic projects
including :

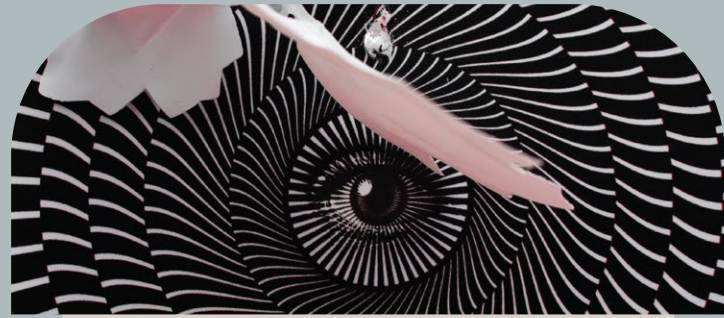
**Al Jazi, Waterway 1, Garden 8 and River Walk, serving as
a central point between the Mohammed Naguib axis
and the North 90th axis, with multiple access points and
a spectacular central location.**



Diffusing A Central Location




- 4 MIN**
 AWAY FROM AL JAZI
- 13 MIN**
 AWAY FROM AUC
- 18 MIN**
 AWAY FROM WATERWAY
- 3 MIN**
 AWAY FROM WATERWAY 2
- 8 MIN**
 AWAY FROM CONCORD PLAZA
- 4 MIN**
 AWAY FROM GARDEN 8
- 15 MIN**
 AWAY FROM EL-LOTUS
- 9 MIN**
 AWAY FROM SOUTH INVESTORS



ALL EYES ON YOU

CITYHALL



The Persistent Art of Wellness



As a next-generation central point of New Cairo, we present a vibrant and pulsing complex with a comprehensive bundle of services and facilities within modern designs and lush landscapes - bridging gaps and connecting modernity of New Cairo city, an entrance to an unparalleled commercial, offices and retail destination.

art of
**WELL
NESS**



ALL EYES ON YOU

CITYHALL





A Modern Inspired Design

This extraordinary 16,000 m2 Commercial & Administrative development is a home of six buildings combining a mix of business, retail, and F&B complexes that is set to change the face of urban living forever.



The front facing side of the project is 300 meters with a total build up area reflecting 40% of the project infused with vast sceneries presenting an ambiance of a warm environment.

A Modern Inspired Design



Master
planning
to perfection





The development consists of 5 floors, 2 Basements and G+ 2 floors with a total building height of 17 meters.

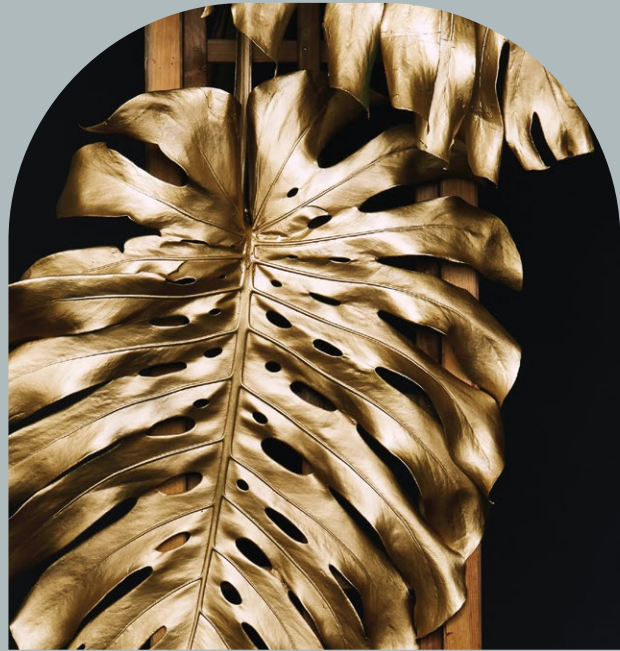


Master Planning to Perfection

The design scheme consists of segregating open spaces of precisely designed greenery within its six main buildings, interconnected rooftops, the boundless spaces with unobstructed sights of foliage.



Combining these elements, we master planned a home to new acquaintances with five separate entrances, 6 escalators and 10 elevators, indulging practicality within an array of basement space covering the whole land area incorporating lifestyle features catering to your convenience and well-being.



Stunning
Interconnected
Buildings





Our carefully designed interconnected terraces on the three top floors cater to you with an appealing interplay of light, shade and water within its shaded patios surrounded with glistening water embracing landscaped walkways.

"A true creation of a spectacular view to match your pursuits of relaxation and indulgence."

The Commercial Zone



CityHALL

The commercial areas encompass the ground and first floor with modern style of contemporary inspiration in design with spaces ranging from 50 m² to 1100 m², creating an unlimited roster of choices.



To further enhance accessibility for the service sector, the project encompasses 6-meter-wide service corridors with direct access to the main roads for ease of access and practicality fusing accessibility and convenience.

The Commercial Zone



From retail brands to F&B to banks to showrooms, ranging from single height at 6m per floor up to duplexes and double height spaces, offering a vast array of selection of spaces and boundless views.

The Commercial Zone



HyperMarket

BASEMENT FLOOR

Area : 2835 sqm

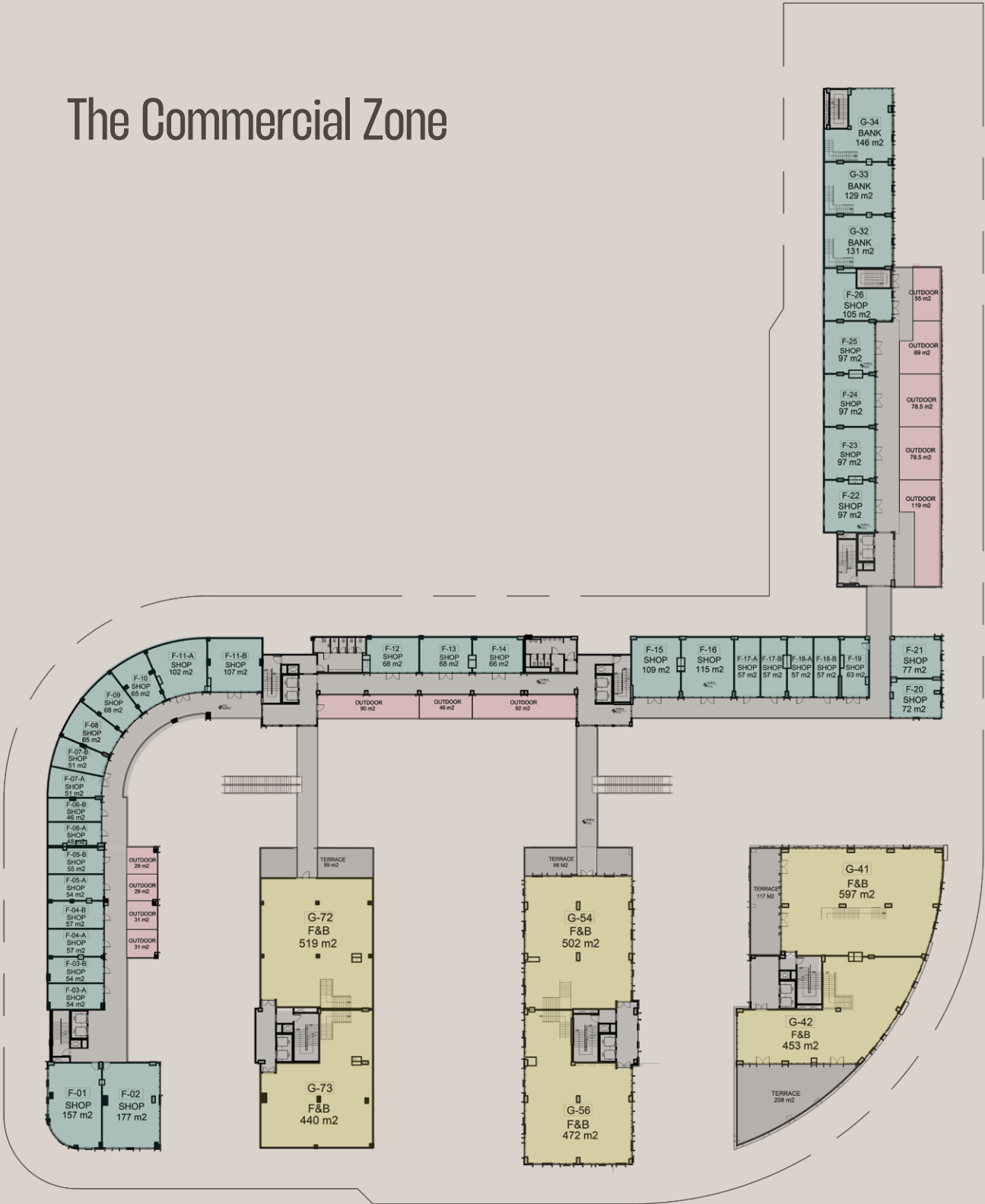


The Commercial Zone



GROUND FLOOR

The Commercial Zone



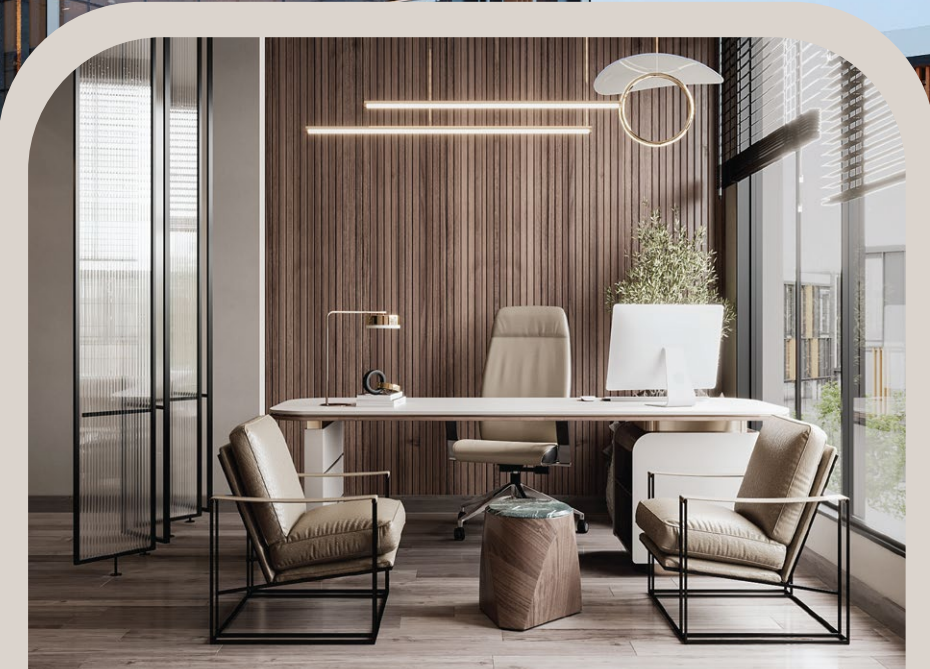
FIRST FLOOR

The Administrative Zone



CITYHALL

With a key objective of nurturing employee efficiency and time, tuneful and well-organized work and market evolution - City Hall offers a welcoming environment to initiate business growth.



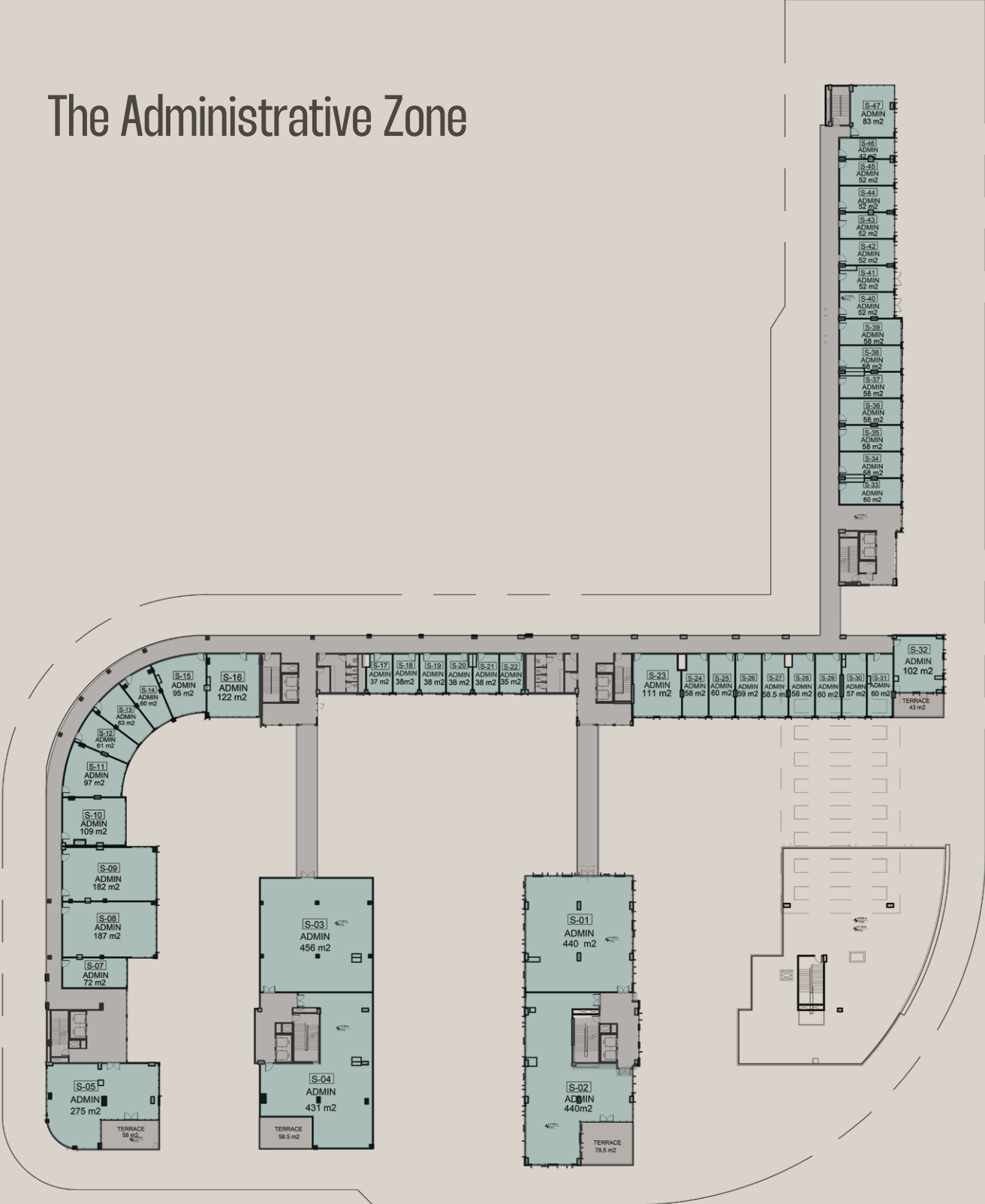


The Administrative Zone

Tailored to provide the most efficient and flexible workspace the business community features fully integrated offices that come in different sizes starting from 50 m² to 500 m² with tranquility of modernity and ergonomics.



The Administrative Zone



SECOND FLOOR



Where everything is at your fingertips, City Hall caters to everyday necessities, featuring an array of facilities with spacious parking spaces and drop off areas, our visitors can quickly access supermarkets, grocers, pharmacies and banks.

Boundless facilities



With a thematically designed interior offering a vast range of restaurant spaces. As you stroll down City Hall you'll find a vast array of selection between cafes and restaurants which are endless.

Spoiling your
senses with dining



With a meticulous eye for convenience of our guests, our surface parking has been designed to serve for shop and run with tailor made drop of areas. The underground parking spaces encompass a capacity of various numbers of cars, with on-site security services and surveillance to ensure our visitors a sense of peacefulness and security.

Parking



Our strategic partners



Our strategic partners



HAFEZ CONSULTANTS
MOHAMED ESSAM HAFEZ
ARCHITECTS . PLANNERS . INTERIOR DESIGNERS

Hafez consultants: Architecture Design

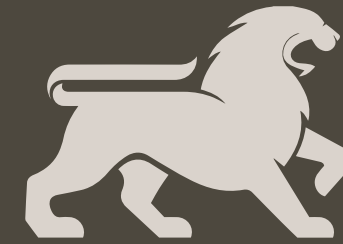
Hafez consultants is a market leader in design conceptualization with over 50 years of expertise in the field. It has completed over 1200 projects of different types including multi complex buildings, residential, public, industrial, corporate, interiors and landscape across the region.

It has been part of major projects across Egypt and the Gulf region as well as Germany. Their design philosophy embraces their passion for quality throughout the interior spaces to support sophisticated designs of the exterior.

Some of their key projects include El Patio 7, La Vista city, Sarai, La Vista Ras El Hekma and Skyline tower in KSA.



Our strategic partners



**Hany Saad
Innovations**™

Hany Saad innovations:
Interior and landscape design

Since its initiation in 2003, Hany Saad Innovations has completed more than 800 projects across Africa and the Middle East ranging from private residential villas and to multi-use commercial projects, clubs, hotels, shopping malls, administrative buildings, and ultra-luxurious residential compounds including projects of the likes of Garden 8 mall, East side Mall, Kattameya Coast, Azha Sokhna, JW Marriott residences, and The MarQ compound.



Our strategic partners



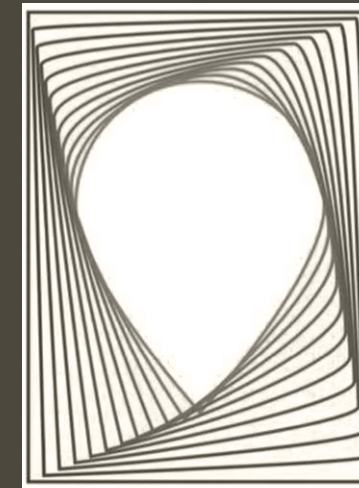
Prime Consulting Office :
Main Consultant

Prime Consulting Office is a fast-growing architectural firm since its establishment with an aim to produce high quality designs with efficient procedures to improve the Egyptian market in terms of project functionality and aesthetics.

PCO has been a part of a variety of key projects in the Egyptian commercial market including contributions to multiple projects across Egypt and Saudi Arabia including the Central Bank of Egypt, Greek campus, the Grand Egyptian Museum, Greek campus, The Lane, V90, Cloud 9 offices, Westmark, Grand residence mall and projects in Saudi Arabia including Selan Resort and Millennium hotel.

VALUE

Our strategic partners



VALUE

Value Group:
Construction Manager

Value is a group of companies specialized in managing, planning projects and contracting services for various sectors.

Value is a pioneer in the field of the implementation and maintenance of installations, structures, and concrete floors, as well as the production and implementation of some traditional and prefabricated building and finishing materials. During the working period that didn't exceed a few years, Value's been able to gain many customers' trust and be the preferred partner including American International School, Cloud 9 mall, West Golf compound, Village Garden Kattameya, Palm Valley Mall, West Mark, Carrefour and Delta business park.

HELP

Our strategic partners

Help: Structural Consultant

Help Engineering Services is a full-service for engineering design and technical support firm with over multi projects completed, with a main branch office in Maadi, Cairo, Egypt.

With common mission of providing responsive design, technological expertise and exceptional service in order to provide itsclients with the best possible facilities that will serve them well into the future including Malaz resort, Tawilla Islands Hurghada, Caesar Bay resort, Mall of Arabia and Damas Factory.



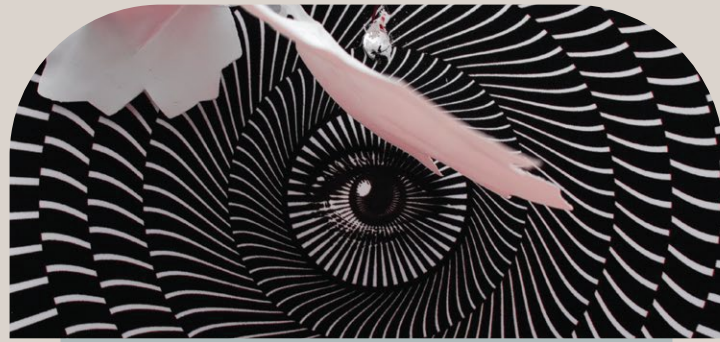
Our strategic partners



Ideas:
Electromechanical consultant

Ideas is an electromechanical consultant specialized in design and supervision the execution of electromechanical works for projects even for buildings or Infrastructure networks, also our scope of works includes preparing shop drawings for contracting firms.

Their key projects include the Cathedral of the New Capital, Fairmont Hotel, Mercedes Showroom and service center, Beau Rivage hotel in Taba, Coral beach resort in Marsa Alam, German University in Cairo and Metro Line one



CityHall

NEW CAIRO

BY  **SERAC**
DEVELOPMENTS

15939