



T I F F A N Y
B U S I N E S S P A R K

N E W C A P I T A L



Details Create

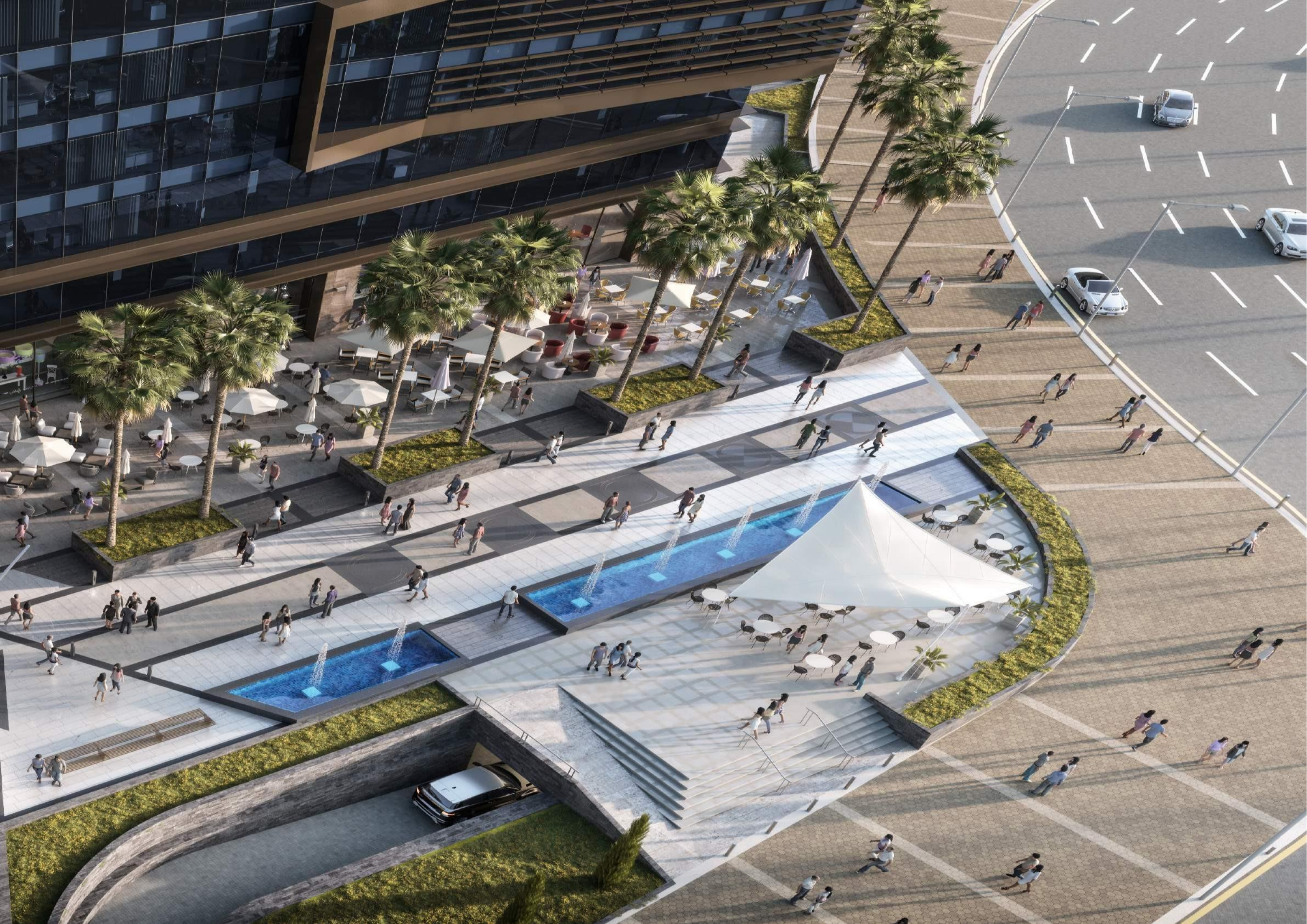


the Big Picture











Details
that make a
difference

There isn't a detail left unattended to. A building designed taking every detail into consideration to ensure your comfort

From meeting rooms with skylight and landscape to central kitchen to serve good and healthy food, everything is carefully calculated and designed to guarantee optimum use of every space and feature. Every aspect of the building has been carefully studied from the way into the building to the multiple comfort centric amenities and support functions, the maneuvering across the space is absolutely well thought of to offer maximum convenience. Featuring outdoor terraces mid buildings to avoid wasting time going up and down for fresh air, along with roof top business meetings spaces that offer open air with sunlight to provide a different and unconventional meeting setup, allowing for creativity and productivity to bloom. The open central kitchens in the basements allow you to get your homemade food and ingredients to cook and eat, lending a home-like cozy feeling, with many other detail-oriented features such as:

- Club House (Spa-Gym)
- Restaurants
- Thinking spaces in each floor
- Lounge in each floor (Different activity in each floor)
- Nursery & Kids Area
- Water Feature







work smart
nothard

TIMEA
BUSINESS





We created an urban masterpiece in the heart of the Administrative New Capital.

Derived from the main concept of the project, we were very careful in maintaining the balance between design and functionality. By bringing elements from nature into the main design of the building and combining it with state of the art space conceptualization, we succeeded in creating a masterpiece that perfectly utilizes the available space along with providing an extraordinary overall experience to you, your employees and your clients.



An architectural rendering of a modern, multi-story building with a glass and metal facade. The building features several balconies with greenery. In the foreground, there is a large, open courtyard with a paved walkway, several tall palm trees, and a small water feature. People are walking and sitting in the courtyard. The building has a modern, industrial feel with large glass windows and metal accents. The text "Inspired by nature" is overlaid on the right side of the image.

Inspired
by
nature





CLUB PARADISE



An eco-friendly building

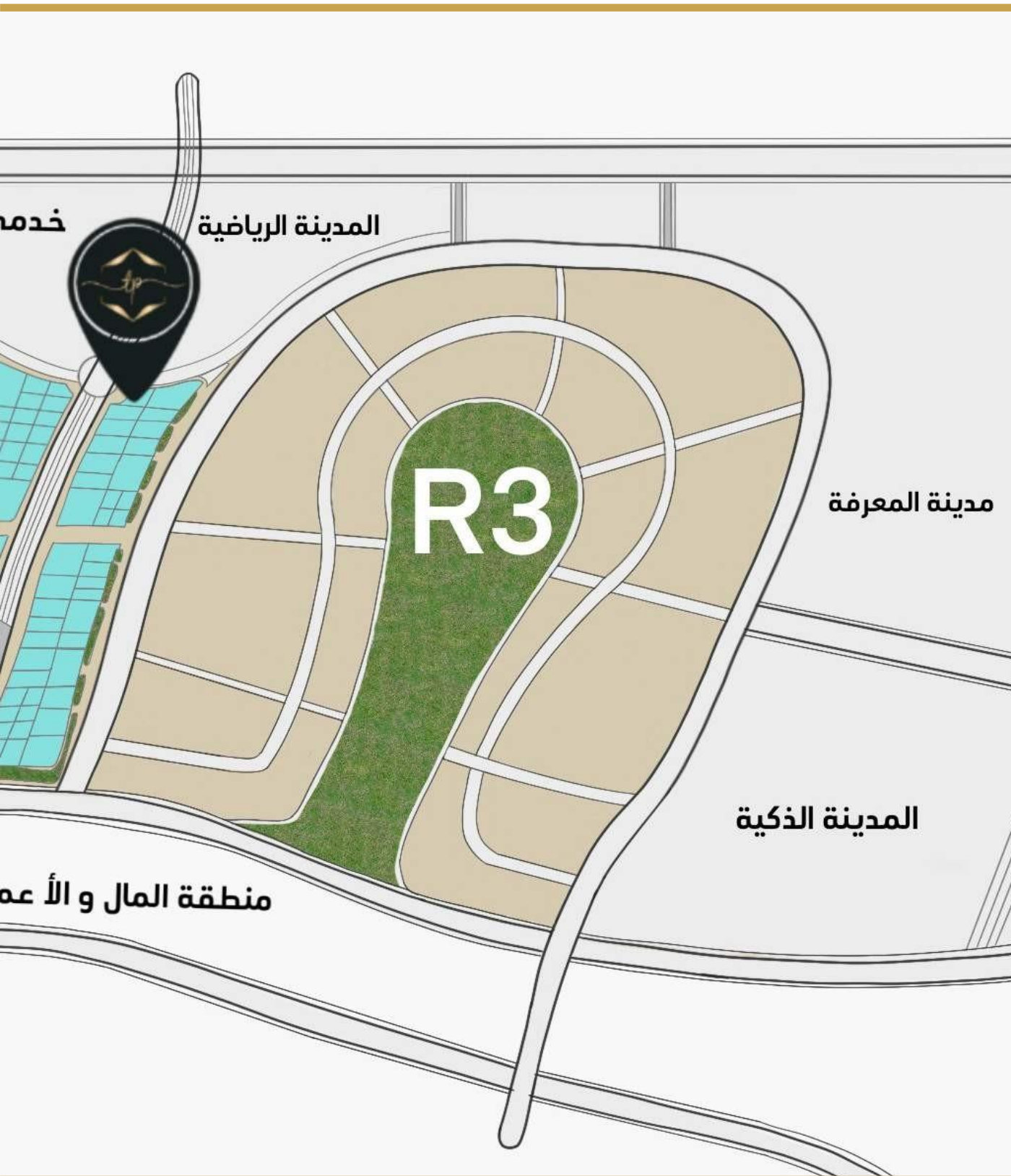
That promotes wellbeing to enhance the overall performance of businesses.

Stemming from our belief in the fact environments contribute to the productivity and performance of different individuals, we created an integrated design that combines functionality and positive energy. By incorporating design elements that allow ample sunlight –without the heat– into the building, along with the quality of air, minimized noise levels, greenery, office designs within that healthy and environmentally friendly building, we succeeded in bringing to you a general feeling of wellbeing, thus resulting in boosting the workforce capabilities, general contentment with the positive work environment, increased motivation and low stress levels.





A brilliant, central, and easy access location



That will help your business thrive.

Situated in one of the most vital locations of the New Administrative Capital, Tiffany Park has easy access to enter and exit, making it the ideal choice for your business success.

Located in MU23 area directly on Al-Amal road, the project is in front of The Sports City; a prime location with direct access to New Cairo, Suez Road and many important landmarks in the New Capital.



Magnificent landscaping and building design



The total area of the project is 5426.12 sqm, 30% only of which is utilized for the built up area, the remaining project space is allocated for landscaping purposes. With gorgeous designs created specifically to provide serenity and peacefulness, our office spaces vary from 95 sqm to 275 sqm and our shops from 120 sqm to 360 sqm. We are committed to delivering new and unique experiences through streamlining every step you take from the second you enter the space down to the most minute details that contribute to the design and overall performance of the business complex.

To cater to your every need.

Contributing to decreasing the cost of the units through creating shared facilities that optimizes space and minimize the overhead cost of assisting staff.

Featuring:

- Water Feature
- Meeting rooms with Zen Garden and skylight
- Club House
- Business Center
- Restaurants
- Sky Business Lounge
- Prayer Room
- Conference center (audio & video equipped)
- Loft Offices



A modern cafe interior with a green sofa, wooden tables, and pendant lights. The space features a dark grey wall, a concrete floor, and a large arched window on the left. Several black pendant lights hang from the ceiling. A long wooden table with a green sofa underneath is in the background. In the foreground, there are wooden stools and a wooden planter box with green plants on a counter.

Handpicked features and facilities












Superb
services and
amenities



To ensure your comfort and maximum efficiency featuring:

- CCTV
- Wide Screen for Marketing solutions
- Fire Fighting Safety
- Security 24/7
- House Keeping
- High Speed Elevators
- Concierge
- Parking
- Central Acs & Heaters
- Maintenance 24/7
- Central Satellite
- WIFI
- Storage Rooms
- Flexible Banquet Spaces
- Laundry for Medical Unit
- Garbage Shoot
- Flexible Gypsum Board Walls
- Smart ID Entrance System
- Central Kitchen







GROUND Floor Plan

OWNER:

CRYSTAL
PROPERTIES FOR DEVELOPMENTS

PLOT 290 - NORTHERN REGION - CITY SERVICES CENTER - NEW CAIRO



Project:

TIFFANY
BUSINESS PARK



DEVELOPER:

PILLARZ
REAL ESTATE DEVELOPMENTS

3 HASSAN SADEK STREET, HELIOPOLIS, CAIRO, EGYPT.
T: +20(2)16184 E: WWW.PILLARZ-DEVELOPMENTS.COM



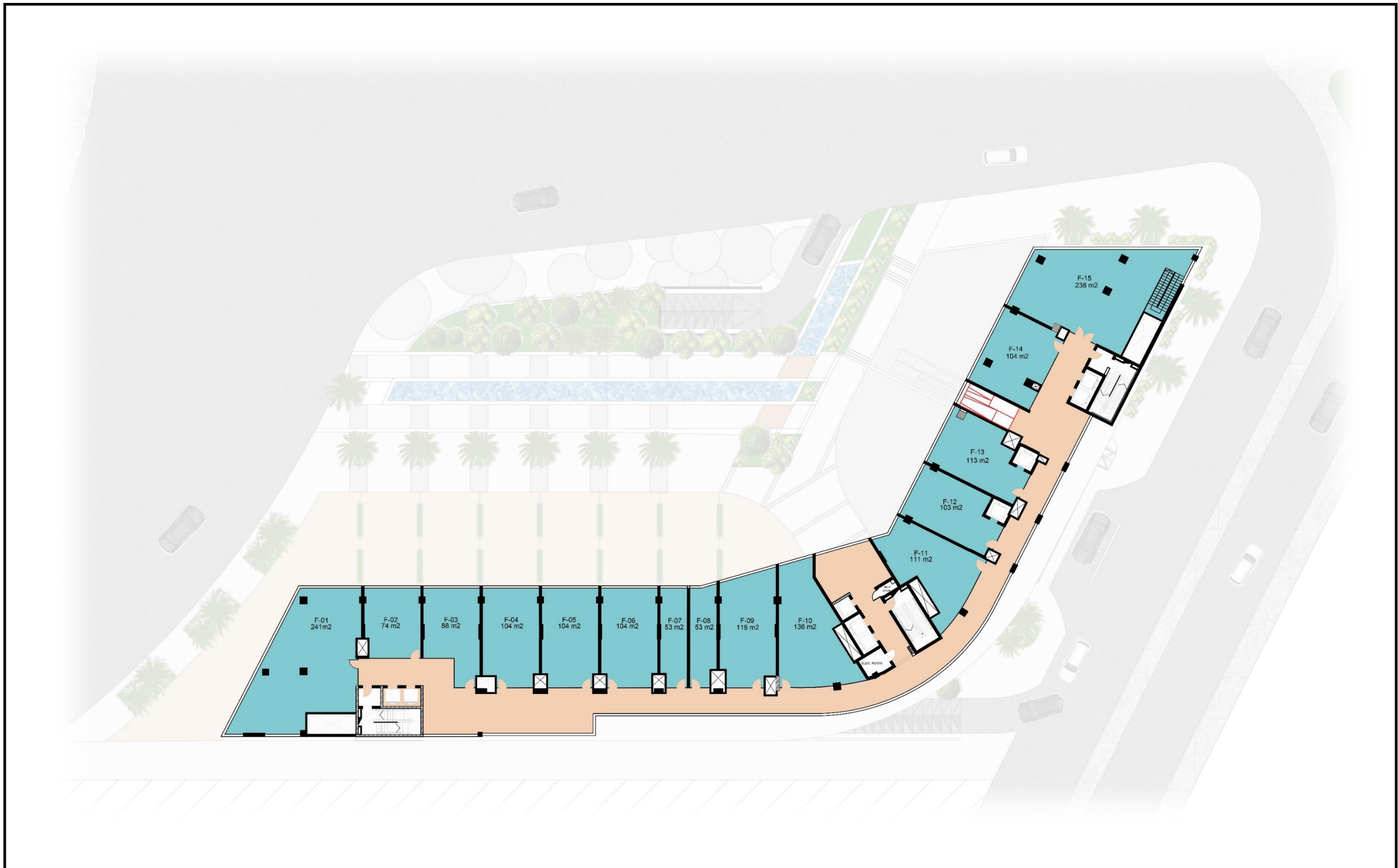
DRAWING TITLE:

GROUND FLOOR PLAN

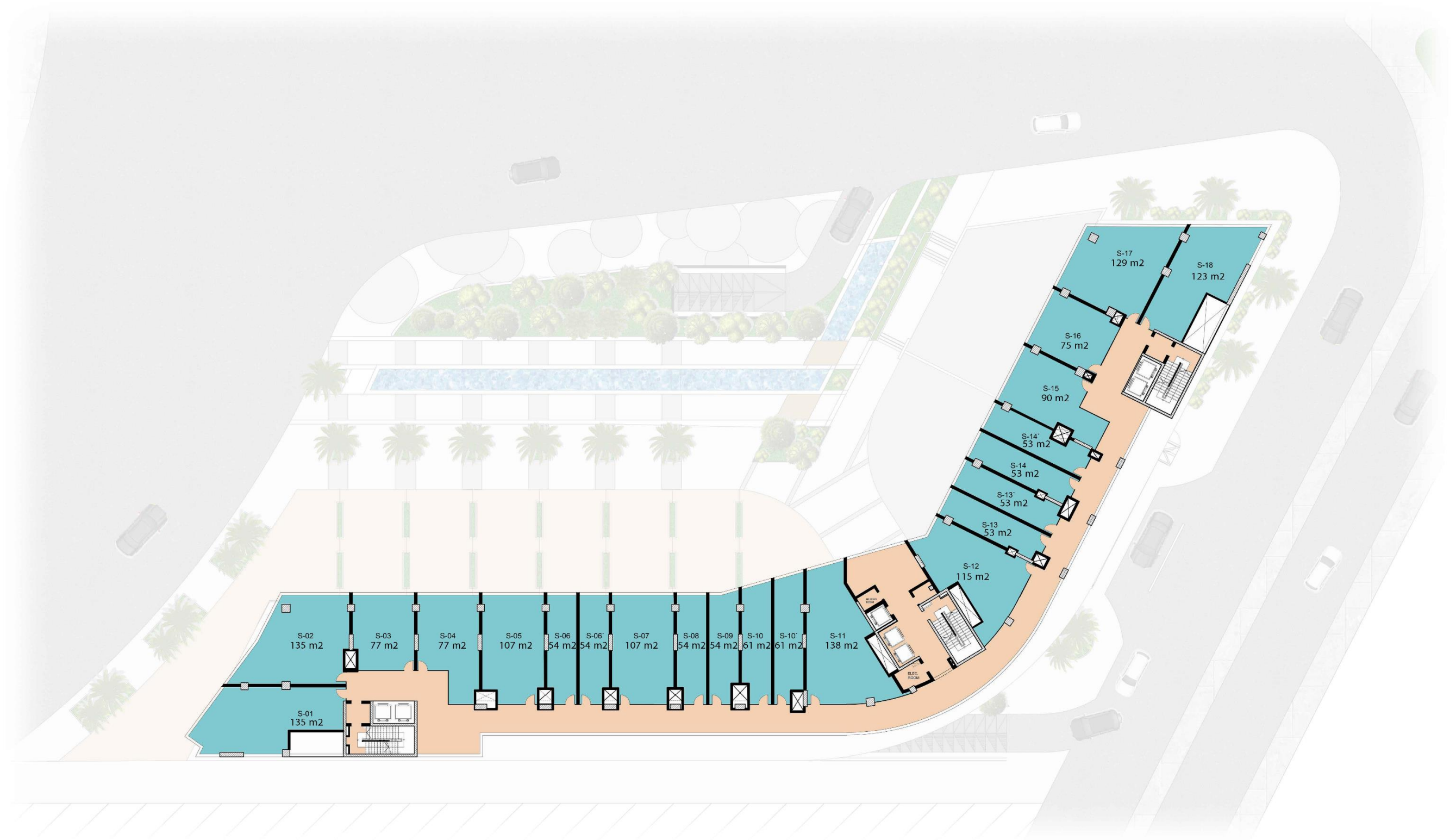
Scale:
TO FIT

DRAWING DATE:
6 DECEMBER 2022

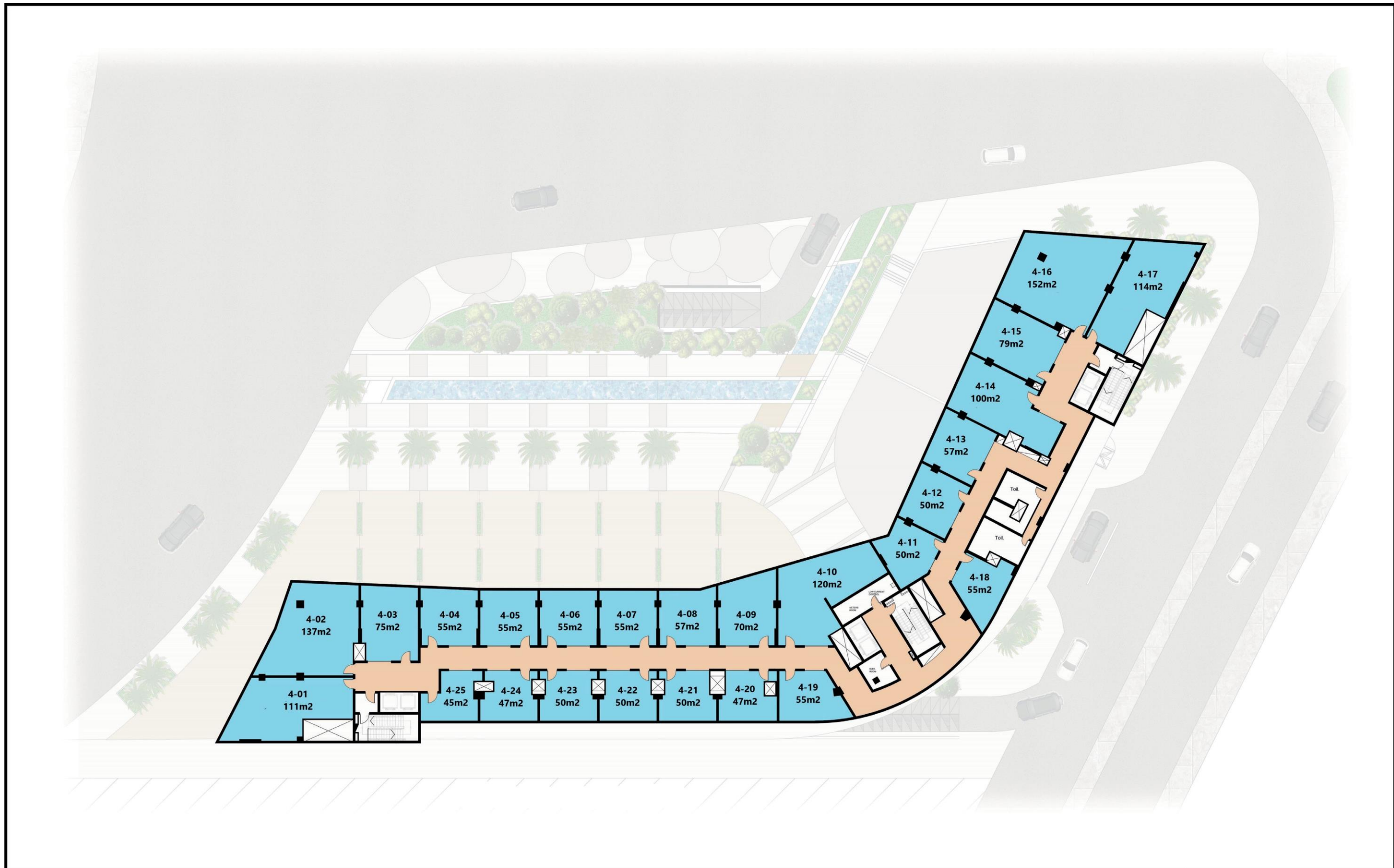
Revision:
00



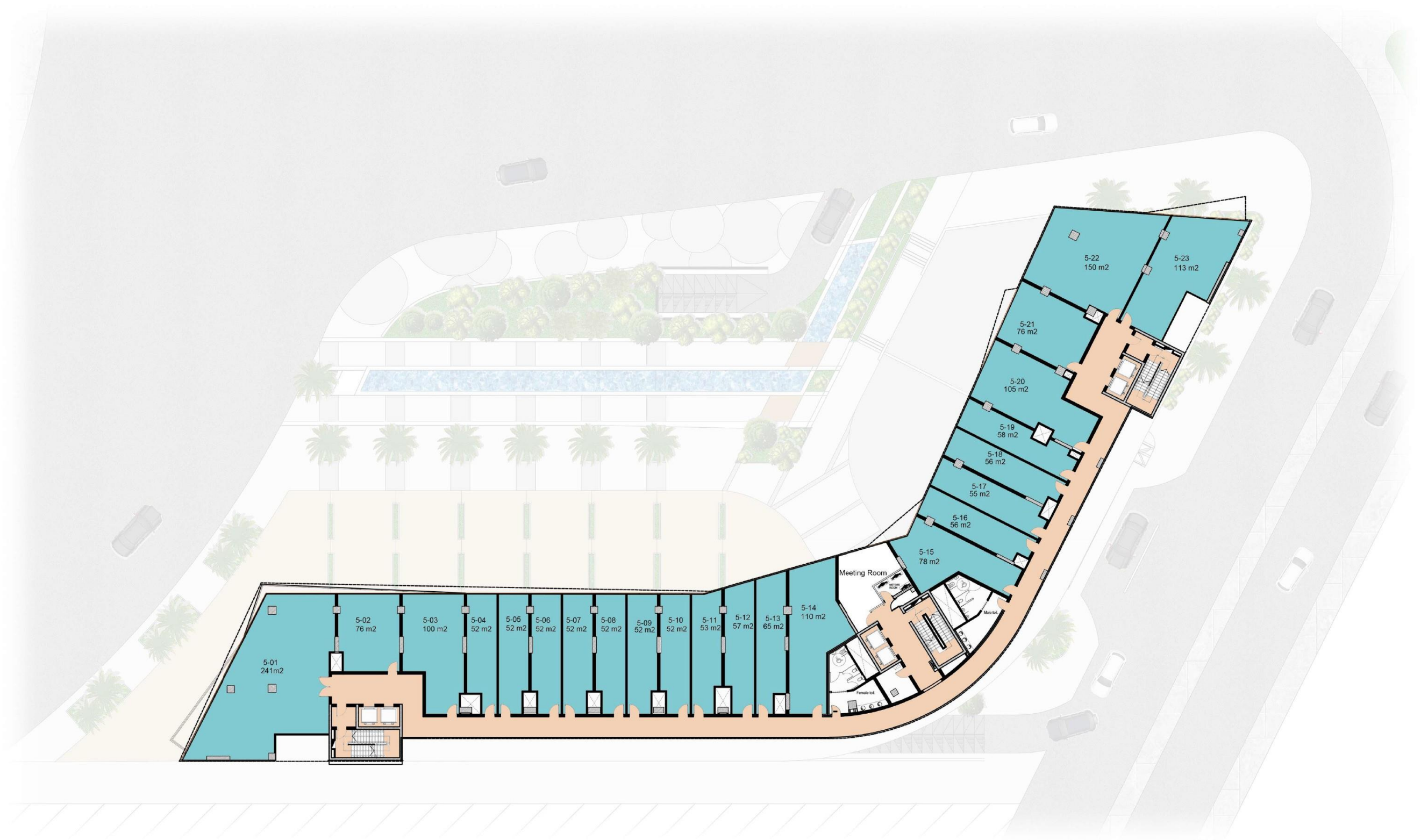
OWNER: CRYSTAL PROPERTIES FOR DEVELOPMENTS PLOT 290 - NORTHERN REGION - CITY SERVICES CENTER - NEW CAIRO		Project: TIFFANY BUSINESS PARK		DEVELOPER: PILLARZ REAL ESTATE DEVELOPMENTS 3 HASSAN SADEK STREET, HELIOPOLIS, CAIRO, EGYPT. T: +20(2)16184 E: WWW.PILLARZ-DEVELOPMENTS.COM		DRAWING TITLE: FIRST FLOOR PLAN		
						Scale: TO FIT	DRAWING DATE: 12 APRIL 2024	Revision: 00



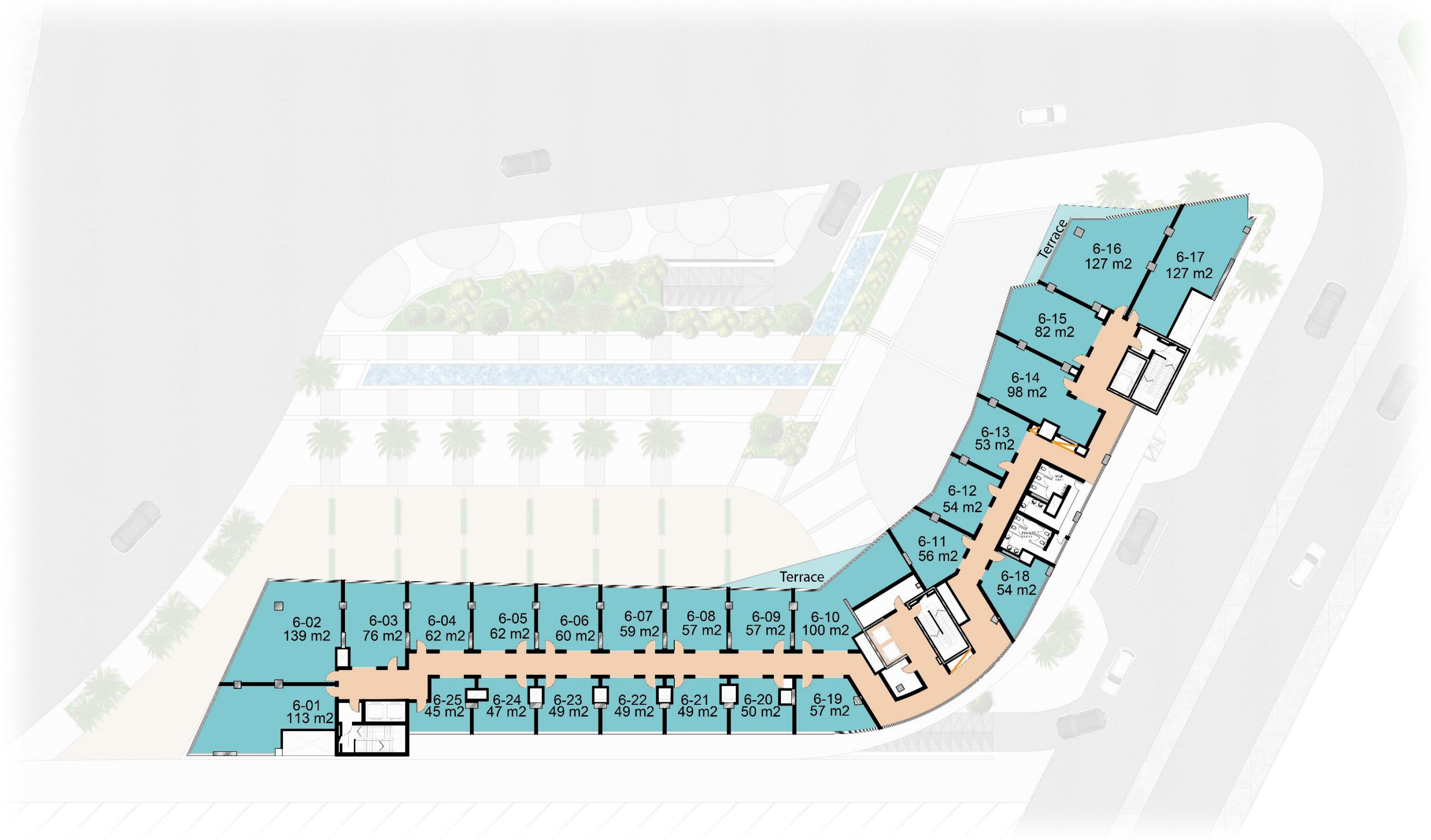
OWNER: CRYSTAL PROPERTIES FOR DEVELOPMENTS PLOT 29D - NORTHERN REGION - CITY SERVICES CENTER - NEW CAIRO		Project: TIFFANY BUSINESS PARK		DEVELOPER: PILLARZ REAL ESTATE DEVELOPMENTS 3 HASSAN SADEK STREET, HELIOPOLIS, CAIRO, EGYPT. T: +20(2)16184 E: WWW.PILLARZ-DEVELOPMENTS.COM		DRAWING TITLE: SECOND FLOOR PLAN		
						Scale: TO FIT	DRAWING DATE: 08 APRIL 2024	Revision: 00



OWNER: CRYSTAL PROPERTIES FOR DEVELOPMENTS PLOT 290 - NORTHERN REGION - CITY SERVICES CENTER - NEW CAIRO		Project: TIFFANY BUSINESS PARK		DEVELOPER: PILLARZ REAL ESTATE DEVELOPMENTS 3 HASSAN SADEK STREET, HELIOPOLIS, CAIRO, EGYPT. T: +20(2)16184 E: WWW.PILLARZ-DEVELOPMENTS.COM		DRAWING TITLE: FOURTH FLOOR PLAN		
						Scale: TO FIT	DRAWING DATE: 5 FEB. 2024	Revision: 00



OWNER: CRYSTAL PROPERTIES FOR DEVELOPMENTS PLOT 29D - NORTHERN REGION - CITY SERVICES CENTER - NEW CAIRO		Project: TIFFANY BUSINESS PARK		DEVELOPER: PILLARZ REAL ESTATE DEVELOPMENTS 3 HASSAN SADEK STREET, HELIOPOLIS, CAIRO, EGYPT. T: +20(2)16184 E: WWW.PILLARZ-DEVELOPMENTS.COM		DRAWING TITLE: FIFTH FLOOR PLAN		
						Scale: TO FIT	DRAWING DATE:	Revision: 00



OWNER: CRYSTAL PROPERTIES FOR DEVELOPMENTS PLOT 290 - NORTHERN REGION - CITY SERVICES CENTER - NEW CAIRO		Project: TIFFANY BUSINESS PARK		DEVELOPER: PILLARZ REAL ESTATE DEVELOPMENTS 3 HASSAN SADEK STREET, HELIOPOLIS, CAIRO, EGYPT. T: +20(2)16184 E: WWW.PILLARZ-DEVELOPMENTS.COM		DRAWING TITLE: SIXTH FLOOR PLAN		
						Scale: TO FIT	DRAWING DATE: 17 APRIL 2024	Revision: 00



About Pillarz Developments

Founded in 2016, Pillarz Developments was established by a consortium of real estate experts that brought to the table massive knowledge and experience in the fields of contracting, property management, construction, development, trade, hospitality, brokerage and marketing.

The company aims to create concept driven, customer centric experiences that are efficient, practical, with exceptional finishing and great attention to details. We believe that utilizing our accumulative expertise to give the priority to our clients - without compromising or cutting corners - is the main driver behind our success.

Taking into consideration the values of fairness, integrity, flexibility, price-sensitivity and full-service expertise gives an edge like no other to our developments; one you can clearly see once you step into any of our projects. We aspire to change the real estate game by introducing exceptional cultural experiences, where functionality and beautiful designs meet to create an experience that takes all the contributing elements into consideration, creating projects that have it all.



GERO & MONO Galaxy Coffee

CAFE PARADISE

CAFE PARADISE

EDILKA Coffee



From the developer of Bali El Gouna



Designed to the breathtaking architecture of Bali and for the first time in El Gouna, Bali el Gouna creates a unique concept that will give you the opportunity to be the owner of a completely integrated home.

The Balinese style homes offer visual beauty and secure living options; starting at the gates of the compound and going all the way to your home's doorstep. We invite you to be part of a vision that we created solely based on your personal needs, wants and preferences.

Every unit has its own Zen garden, private pool, parking and fenced terrace. Beyond the privacy of your home you will enjoy the luxury of a signature clubhouse. Choose what best suits your needs from our studios, one bedroom, two bedroom or three bedroom units. Enjoy landscaping that takes into consideration aesthetics as well as your day to day needs.



T I F F A N Y
B U S I N E S S P A R K

N E W C A P I T A L

Hotline 16184
3 Hassan Sadek st. Heliopolis, Baron.
info@pillarz-developments.com

DEVELOPED BY:

