

avelin FULLY FINISHED  
APARTMENTS

A woman with long dark hair, wearing a light blue long-sleeved top, is lying down in a field of pink and white flowers. She has her eyes closed and a peaceful expression, resting her head on her arm. The background is a dense field of similar flowers and green foliage, creating a serene and natural atmosphere.

# AN INSPIRATION FROM A VERACIOUS PROMISE;

---

*Avelin Is A Beautiful Breath Of Life Brought To Its Residents Through Greenery And An Unmatched Atmosphere.*





# ABOUT TIMES DEVELOPMENTS

A boutique developer making its mark and impression on Egypt's real estate market. We hold nearly 300,000M2 of area across our three mixed-use projects. Our shareholders have decades of industry experience. We capitalize on this deep knowledge and mastery as we step forward into the future of high-end experiences in New Cairo, and beyond.

Our fresh approach is what sets us apart and what made our entry to the market significant. Our forward thinking helps us make the best out of emerging trends and even starting our own. We appreciate the importance of belonging and community, and we provide our clients with the sought-after experience.



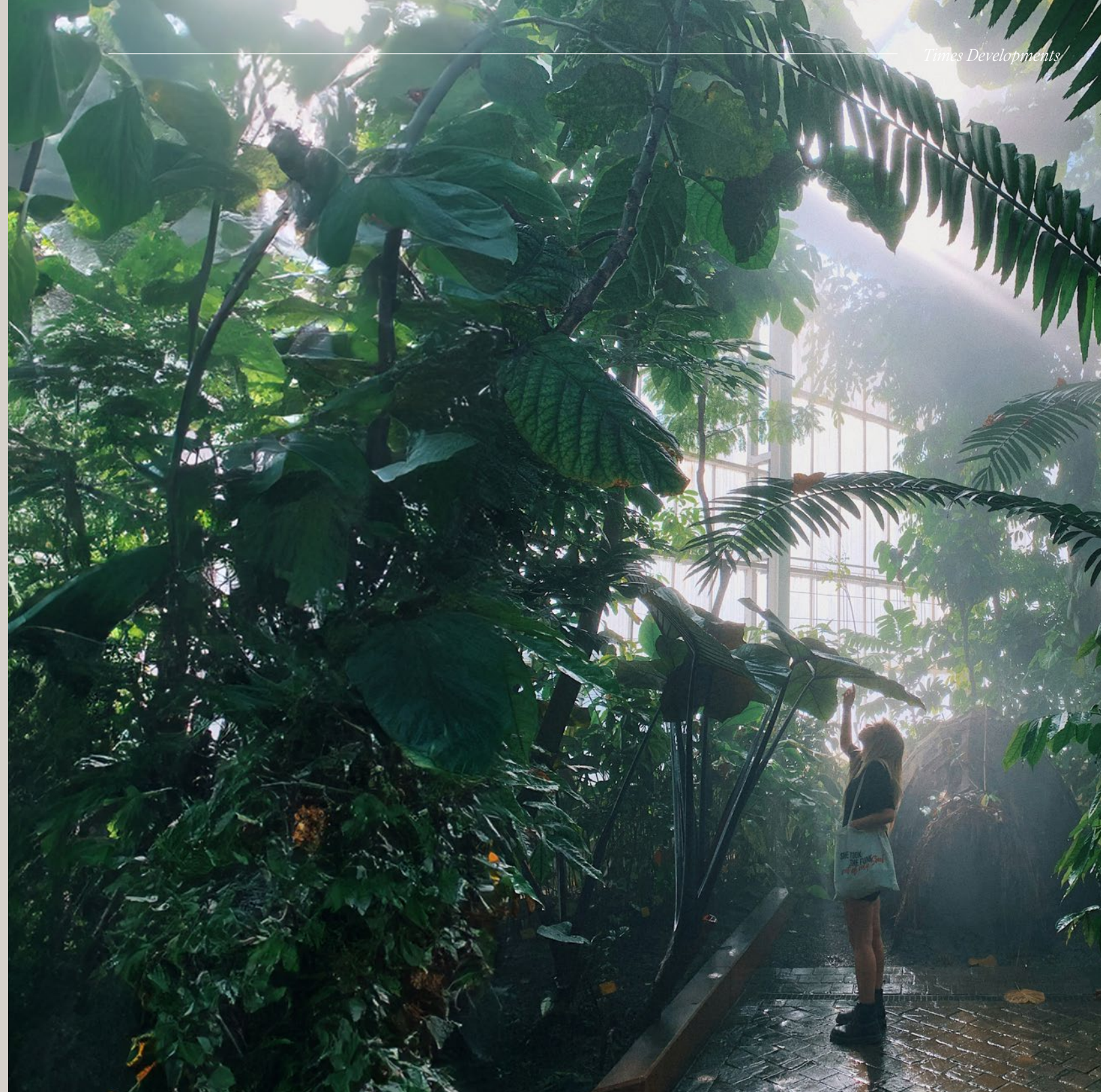
WE PRIORITIZE HONESTY  
AND TRANSPARENCY  
IN ALL OUR DEALINGS  
WITH TENANTS, CUSTOMERS,  
AND PARTNERS.

Our commitment to ethical business practices builds trust within our community. We are developing and merging the finest qualities to perfectly describe our work culture, which will later be reflected on our image to the outside world.



# WE CONTINUOUSLY SEEK CREATIVE SOLUTIONS

to enhance the shopping experience, promote sustainable practices, and adapt to changing market trends. Innovation drives our growth and competitiveness, with meticulous planning and unmistakable design.







## WE TAKE OUR ROLE IN THE COMMUNITY SERIOUSLY

striving to minimize our environmental footprint, support local businesses, and contribute positively to the neighborhoods we serve. Responsibility guides our decisions and actions.



# OUR PARTNERS

## LANDSCAPE DESIGNER



OKOPLAN is a full-service engineering consultancy firm, originally founded in Stuttgart, Germany in 1990. Another office was later established in Cairo, Egypt in 1993.

## PROJECT DESIGNER



With over 50 years of experience in the field of engineering consultancy, ECG exemplifies an un-paralleled legacy. For years, it has remained true to its roots and core values while being at the forefront of innovation and global trends; thereby creating a unique quality allowing it to meet Clients' requirements at the highest efficiency levels.

## PROJECT CONSULTANT





# avelin

Your breath of fresh air amid one of the city's happening spots. Avelin is a full-fledged residential and commercial compound that brings together multiple elements of life within one destination. Built on 21 feddans, the project is endorsed with multiple residential apartments, embedded with inspiring greenery, and complimented with an unmatched commercial area. Introducing the concept of luxury boutique living incorporating all elements of life.





SURROUNDED BY

# THE BREATHES OF NATURE

*Times Developments*

With a distinctive urban character, Avelin is rich with open views and exceptional landscape features. Its low-density masterplan allows every resident to enjoy strolls and views that are enhanced with elements of nature, waterfall features and inspirational greenery.



# avelin

## FULLY FINISHED APARTMENTS

Avelin offers fully finished residential apartments, designed with meticulous attention to detail and seamlessly embedded within inspiring greenery. Complimented by a vibrant commercial area, it brings together all aspects of life within one harmonious destination. It's more than a place to live—it's a lifestyle that celebrates the perfect balance between nature, community, and modern convenience."







# FINISHING SPACES PACKAGES

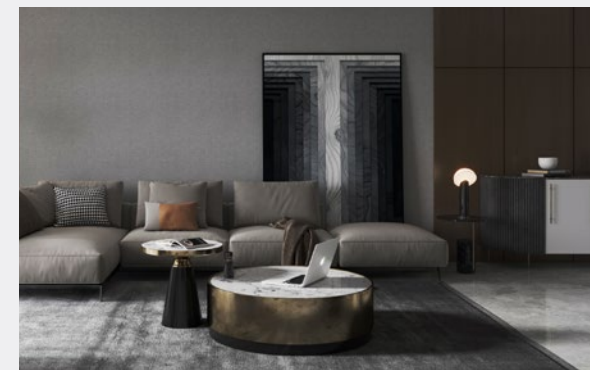
*Times Developments*

## BRIGHT PACKAGES



The Bright Mood reflects modern elegance, combining soft hues, clean lines, and natural light to create an airy, vibrant space. Every detail is designed for a welcoming and uplifting luxury living experience.

## DARK PACKAGES

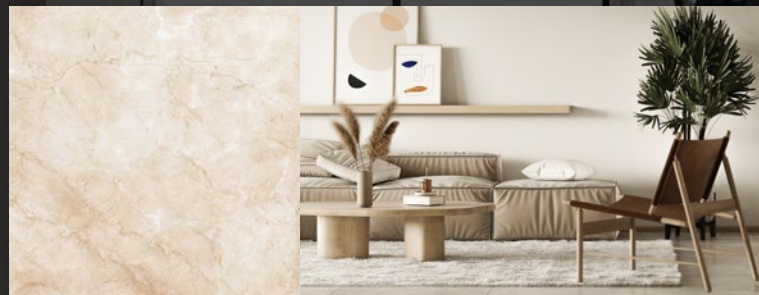


The Dark Mood embodies bold sophistication, with deep tones, rich textures, and sleek finishes. It offers a refined, warm, and exclusive atmosphere for those with a taste for modern luxury.

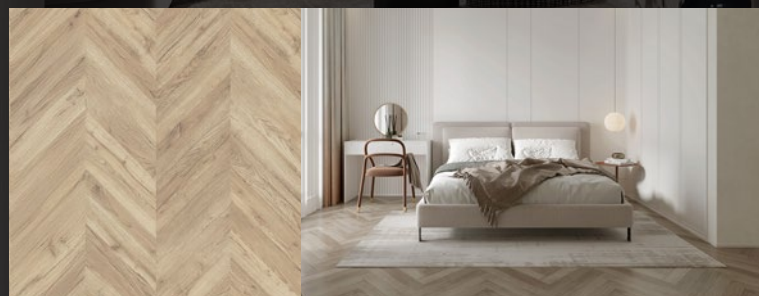


# FINISHING SPACES MOOD BOARD

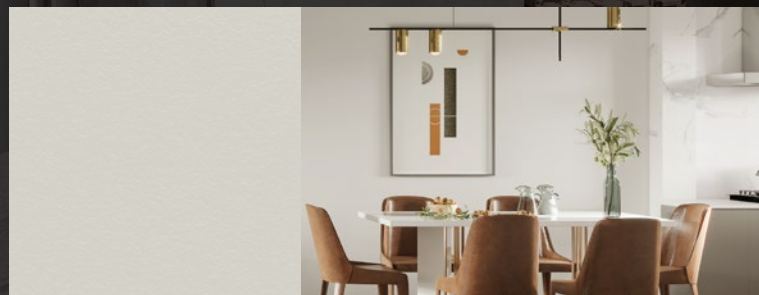
PORCELAIN TILES



HDF



PLASTER & PAINT



## BRIGHT PACKAGES

FULLY-FINISHED

FLOORS

PORCLINE TILES – HDF

WALLS

PLASTER & PAINT

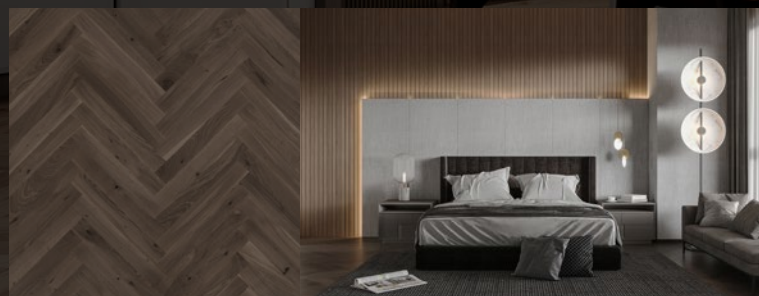


# FINISHING SPACES MOODBOARD

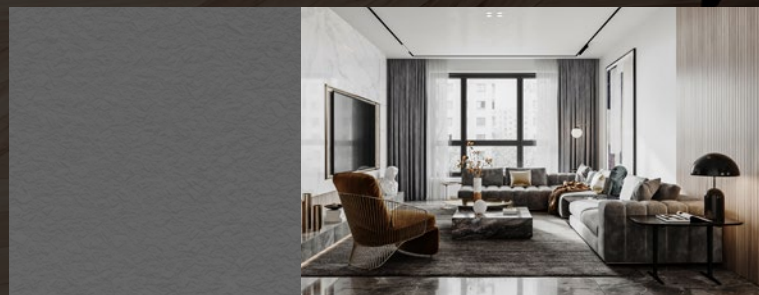
PORCELAIN TILES



HDF



PLASTER & PAINT



## DARK PACKAGES

### FULLY-FINISHED

#### FLOORS

Marble Foyer – HDF Rooms

#### WALLS

Plaster & Paint





## CLUBHOUSE

The clubhouse is the heart of the community, offering an exclusive space to unwind, socialize, and enjoy premium amenities. Designed with luxury and comfort in mind, it caters to a lifestyle of relaxation and connection.



## T HUB

A mixed-use commercial hub right in the heart of it all, “T” comprises of the perfect venues of business facilities, and entertainment. Set to perfect everything it touches, “T” is setting the standards high up with its lavish ways, creating the perfect stroll, shopping spree, work or business venue, breakfast or dining ambiances,



## TODDLERS

A safe and vibrant environment designed for toddlers to explore, play, and grow. Every detail has been carefully considered to create a space where little ones can enjoy fun-filled moments in a secure setting.



## KIDS AREA

A dedicated kids’ area filled with exciting activities and creative spaces. It’s designed to inspire imagination, foster friendships, and keep children happily engaged.



## LARGE SHARED POOL

Dive into the ultimate leisure experience with our large shared pool, surrounded by lush greenery and serene views. Whether for relaxation or recreation, it’s a perfect escape from the everyday.



## OPEN AIR THEATRE

Experience unforgettable moments at the open-air theater, where entertainment meets the beauty of the outdoors. It’s the perfect venue for cultural events, movie nights, and community gatherings under the stars.

# AMENITIES

Every corner at Avelin is well thought of to ensure a contented quality of life. The daily needs are always within reach encompassed within a community that values superior liveable spaces.



# LOCATION

## RIGHT WHERE YOU SHOULD BE

Avelin's strategic location brings together the essential calmness with you being minutes away from everything you need.

### 10 MINUTES

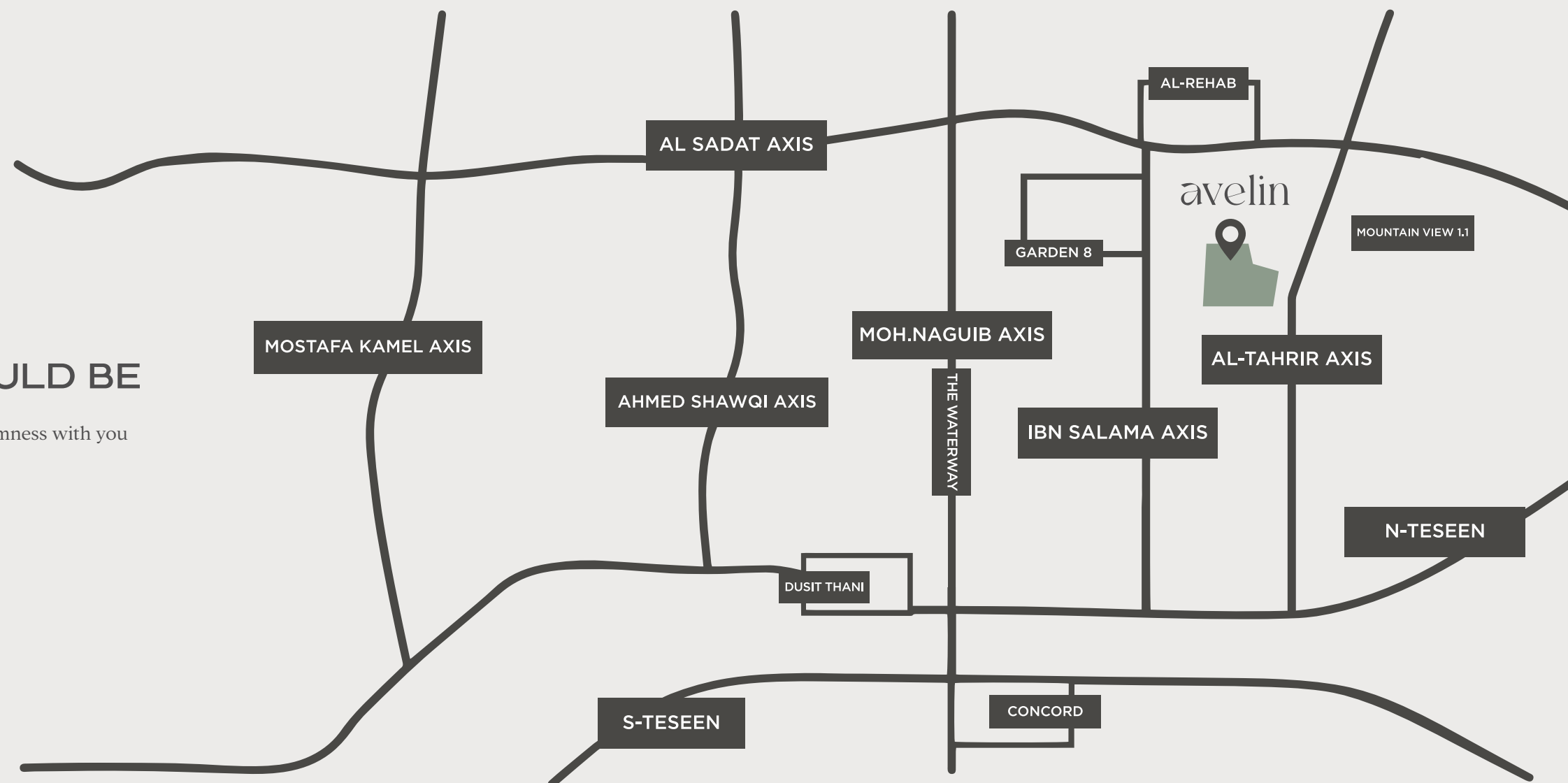
from 90 Street

### 25 MINUTES

from Cairo Airport

### 30 MINUTES

from New Administrative Capital









# RENDERS





# ARCHITECTURE EVOKING MODERNITY.

Built to create a unique modern life, Avelin is rich with minimal sleek designs at every front. With a creative vision for its masterplan and distinctive implementation of a smart design you'll walk into a realm of contemporary luxury.

























# FLOOR PLANS





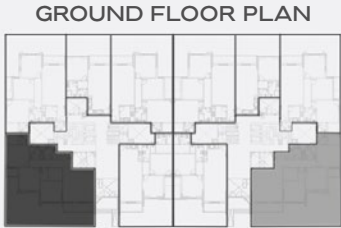
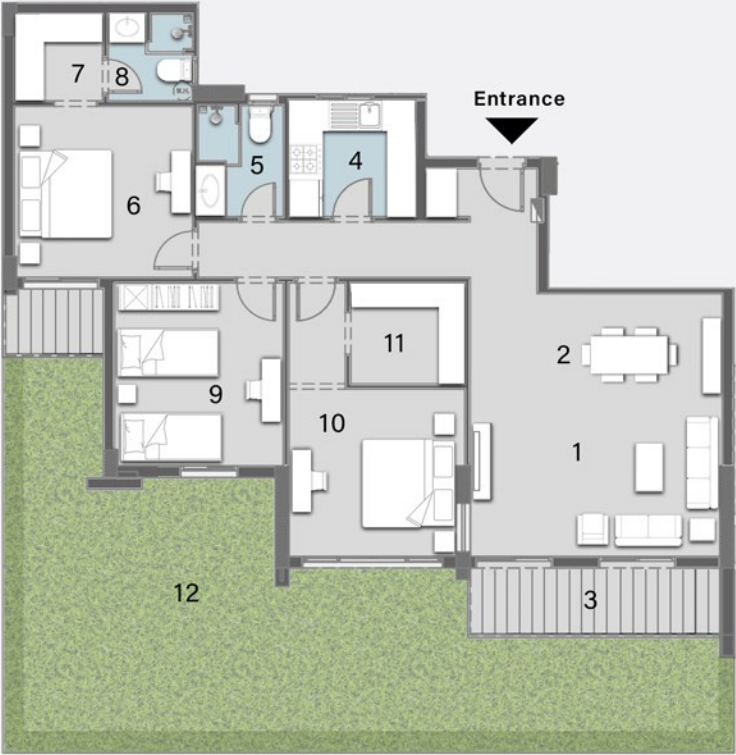
DISCLAIMER: All materials, dimensions and drawings are approximate. information is subject to change without notice. drawings are not to scale and actual usable floor spaces may vary from the scale floor plans. the developer reserves the right to make revisions to the floor plans

# APARTMENT A

Ground Floor



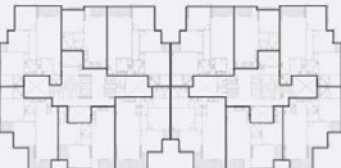
# FLOOR PLAN



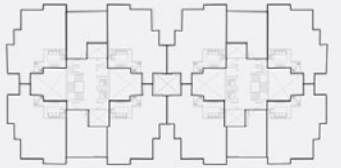
FIRST FLOOR PLAN



TYPICAL FLOOR PLAN



ROOF FLOOR PLAN



## TYPE A

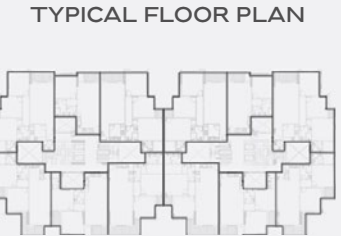
3 BEDROOMS  
TOTAL AREA: 185 M<sup>2</sup>

1 Reception	5.60m	x	3.30m
2 Dining	5.60m	x	2.60m
3 Terrace 1	5.60m	x	1.60m
4 Kitchen	2.65m	x	2.90m
5 Bathroom	2.60m	x	1.90m
6 Master Bedroom	4.00m	x	3.90m
7 Master Dressing	2.10m	x	2.10m
8 Master Bathroom	2.10m	x	1.90m
9 Bedroom 1	3.80m	x	4.10m
10 Bedroom 2	3.80m	x	3.90m
11 Dressing 2	2.30m	x	2.55m
12 Terrace 2	2.30m	x	1.60m
13 Garden			

DISCLAIMER: All materials, dimensions and drawings are approximate. information is subject to change without notice. drawings are not to scale and actual usable floor spaces may vary from the scale floor plans. the developer reserves the right to make revisions to the floor plans



# FLOOR PLAN



## TYPE A

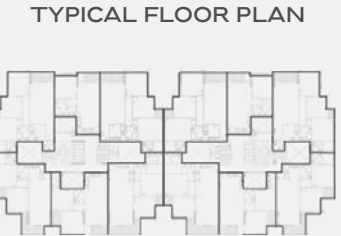
3 BEDROOMS  
TOTAL AREA: 160 M<sup>2</sup>

1 Reception	4.10m	x	4.10m
2 Dining	3.00m	x	4.10m
3 Terrace 1	4.10m	x	1.60m
4 Kitchen	2.70m	x	2.90m
5 Guest Toilet	2.00m	x	1.50m
6 Bathroom	2.40m	x	2.20m
7 Master Bedroom	4.00m	x	3.80m
8 Master Dressing	2.00m	x	1.90m
9 Master Bathroom	1.900m	x	1.90m
10 Bedroom 1	3.80m	x	3.90m
11 Bedroom 2	3.80m	x	4.00m
12 Terracec 2	1.50m	x	1.60m
13 Garden			

DISCLAIMER: All materials, dimensions and drawings are approximate. information is subject to change without notice. drawings are not to scale and actual usable floor spaces may vary from the scale floor plans. the developer reserves the right to make revisions to the floor plans



# FLOOR PLAN



## TYPE A

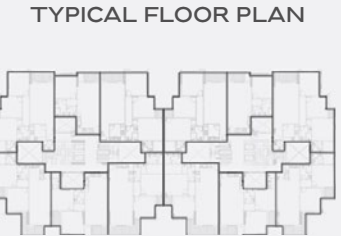
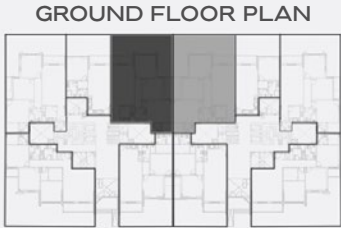
1 BEDROOMS  
TOTAL AREA: 92 M<sup>2</sup>

1 Reception	3.90m	x	3.75m
2 Dining	3.90m	x	2.40m
3 Kitchen	2.45m	x	2.60m
4 Terrace	3.90m	x	1.50m
5 Master Bedroom	4.10m	x	3.90m
6 Master Bathroom	2.90m	x	2.00m
7 Guest Toilet	1.80m	x	1.60m
8 Garden			

DISCLAIMER: All materials, dimensions and drawings are approximate. information is subject to change without notice. drawings are not to scale and actual usable floor spaces may vary from the scale floor plans. the developer reserves the right to make revisions to the floor plans



# FLOOR PLAN



# TYPE A

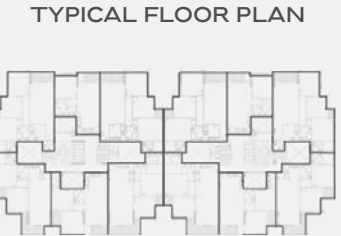
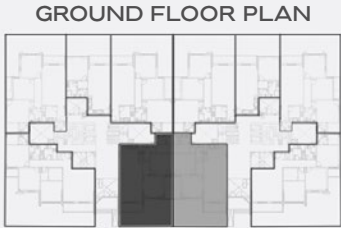
3 BEDROOMS  
TOTAL AREA: 160 M<sup>2</sup>

1 Reception	4.10m	x	4.10m
2 Dining	3.00m	x	4.10m
3 Terrace 1	4.10m	x	1.60m
4 Kitchen	2.60m	x	3.00m
5 Bathroom	2.40m	x	2.20m
6 Master Bedroom	4.40m	x	3.80m
7 Master Dressing	1.80m	x	1.90m
8 Master Bathroom	1.900m	x	1.90m
9 Bedroom 1	3.80m	x	3.80m
10 Bedroom 2	3.95m	x	4.00m
11 Terracec 2	1.50m	x	1.60m
12 Garden			

DISCLAIMER: All materials, dimensions and drawings are approximate. information is subject to change without notice. drawings are not to scale and actual usable floor spaces may vary from the scale floor plans. the developer reserves the right to make revisions to the floor plans



# FLOOR PLAN



## TYPE A

2 BEDROOMS  
TOTAL AREA: 136 M<sup>2</sup>

1 Reception	4.20m	x	4.10m
2 Dining	2.85m	x	4.10m
3 Terrace 1	4.10m	x	1.60m
4 Kitchen	2.70m	x	2.95m
5 Bathroom	2.30m	x	1.60m
6 Master Bedroom	3.70m	x	3.90m
7 Master Dressing	2.90m	x	1.60m
8 Master Bathroom	2.900m	x	2.00m
9 Bedroom 1	3.85m	x	3.80m
10 Terrac ec 2	1.50m	x	1.60m
11 Garden			

DISCLAMER: All materials, dimensions and drawings are approximate. information is subject to change without notice. drawings are not to scale and actual usable floor spaces may vary from the scale floor plans. the developer reserves the right to make revisions to the floor plans





DISCLAIMER: All materials, dimensions and drawings are approximate. information is subject to change without notice. drawings are not to scale and actual usable floor spaces may vary from the scale floor plans. the developer reserves the right to make revisions to the floor plans

# APARTMENT A

First Floor



# FLOOR PLAN



## TYPE A

3 BEDROOMS  
TOTAL AREA: 172 M<sup>2</sup>

1 Reception	5.60m	x	3.30m
2 Dining	5.60m	x	2.60m
3 Kitchen	2.65m	x	2.90m
4 Bathroom	2.60m	x	1.90m
5 Master Bedroom	4.00m	x	3.90m
6 Master Dressing	2.10m	x	2.10m
7 Master Bathroom	2.10m	x	1.90m
8 Bedroom 1	3.80m	x	4.10m
9 Bedroom 2	3.90m	x	4.10m
10Terracec 1	3.90m	x	2.10m
11 Terracec 2	2.30m	x	1.60m
		x	

DISCLAMER: All materials, dimensions and drawings are approximate. information is subject to change without notice. drawings are not to scale and actual usable floor spaces may vary from the scale floor plans. the developer reserves the right to make revisions to the floor plans



# FLOOR PLAN



## TYPE A

2 BEDROOMS+ LIVING  
TOTAL AREA: 160 M<sup>2</sup>

1 Reception	4.10m	x	4.10m
2 Dining	4.10m	x	2.60m
3 Terrace 1	4.10m	x	2.90m
4 Kitchen	2.70m	x	3.00m
5 Guest Toilet	1.40m	x	2.60m
6 Living Room	2.90m	x	4.15m
7 Bathroom	2.30m	x	3.00m
8 Master Bedroom	3.70m	x	3.90m
9 Master Bathroom	2.90m	x	2.00m
10 Master Dressing	2.90m	x	1.60m
11 Bedroom 1	3.80m	x	3.85m
12Terracec 2	1.50m	x	1.60m

DISCLAIMER: All materials, dimensions and drawings are approximate. information is subject to change without notice. drawings are not to scale and actual usable floor spaces may vary from the scale floor plans. the developer reserves the right to make revisions to the floor plans





DISCLAIMER: All materials, dimensions and drawings are approximate. information is subject to change without notice. drawings are not to scale and actual usable floor spaces may vary from the scale floor plans. the developer reserves the right to make revisions to the floor plans

# APARTMENT A

Typical Floor



# FLOOR PLAN



## TYPE A

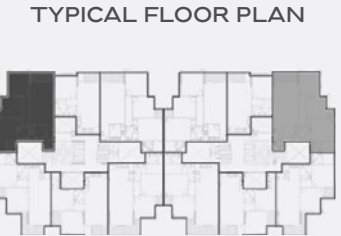
2 BEDROOMS  
TOTAL AREA: 136 M<sup>2</sup>

1 Reception	4.20m	x	3.90m
2 Dining	3.70m	x	3.90m
3 Terrace 1	3.90m	x	1.60m
4 Kitchen	2.70m	x	2.50m
5 Bathroom	2.60m	x	1.94m
6 Master Bedroom	4.00m	x	3.90m
7 Master Dressing	2.10m	x	2.10m
8 Master Bathroom	2.10m	x	1.90m
9 Bedroom 1	3.80m	x	4.10m
10 Terrace 2	2.30m	x	1.60m

DISCLAIMER: All materials, dimensions and drawings are approximate. information is subject to change without notice. drawings are not to scale and actual usable floor spaces may vary from the scale floor plans. the developer reserves the right to make revisions to the floor plans



# FLOOR PLAN



## TYPE A

3 BEDROOMS  
TOTAL AREA: 160 M<sup>2</sup>

1 Reception	4.10m	x	4.10m
2 Dining	3.00m	x	4.10m
3 Terrace 1	4.10m	x	1.60m
4 Kitchen	2.70m	x	2.90m
5 Guest Toilet	2.00m	x	1.50m
6 Bathroom	2.40m	x	2.20m
7 Master Bedroom	4.00m	x	3.80m
8 Master Dressing	2.00m	x	1.90m
9 Master Bathroom	1.900m	x	1.90m
10 Bedroom 1	3.80m	x	3.90m
11 Bedroom 2	3.80m	x	4.00m
12 Terracec 2	1.50m	x	1.60m
13 Garden			

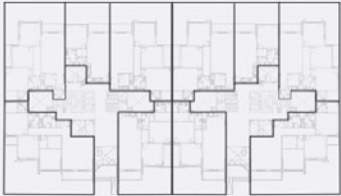
DISCLAMER: All materials, dimensions and drawings are approximate. information is subject to change without notice. drawings are not to scale and actual usable floor spaces may vary from the scale floor plans. the developer reserves the right to make revisions to the floor plans



# FLOOR PLAN



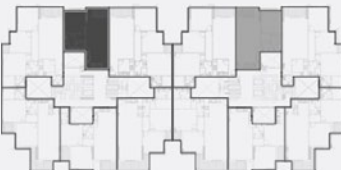
GROUND FLOOR PLAN



FIRST FLOOR PLAN



TYPICAL FLOOR PLAN



ROOF FLOOR PLAN



## TYPE A

1 BEDROOM  
TOTAL AREA: 92 M<sup>2</sup>

1 Reception	3.90m	x	3.75m
2 Dinning	3.90m	x	2.40m
3 Kitchen	2.45m	x	2.60m
4 Terrace 1	3.90m	x	1.50m
5 Master Bedroom	4.10m	x	3.90m
6 Bathroom	2.90m	x	2.00m
7 Guest Toilet	1.80m	x	1.60m

DISCLAIMER: All materials, dimensions and drawings are approximate. information is subject to change without notice. drawings are not to scale and actual usable floor spaces may vary from the scale floor plans. the developer reserves the right to make revisions to the floor plans



# FLOOR PLAN



GROUND FLOOR PLAN



FIRST FLOOR PLAN



TYPICAL FLOOR PLAN



ROOF FLOOR PLAN



## TYPE A

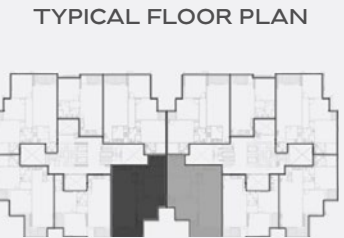
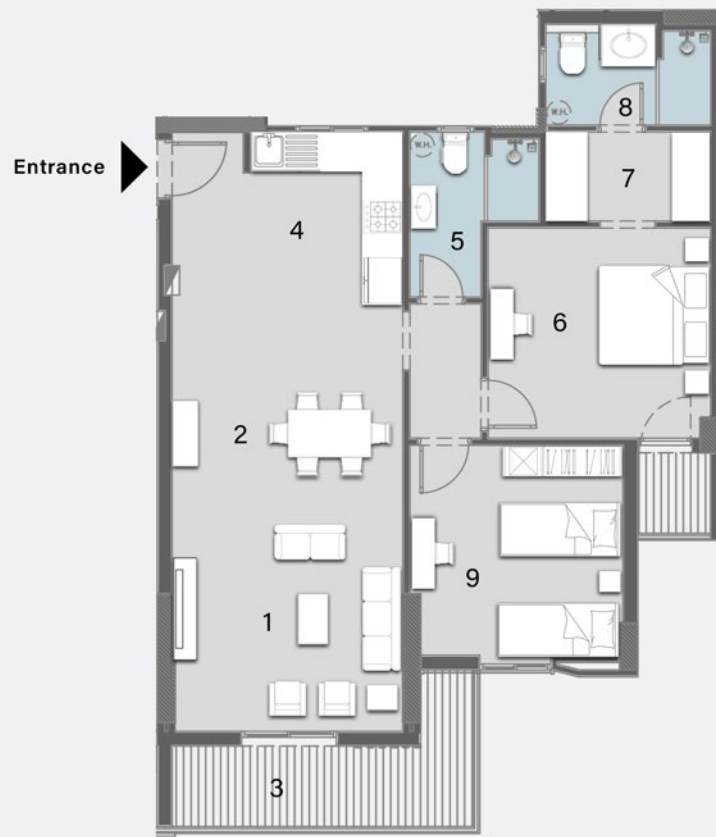
3 BEDROOMS  
TOTAL AREA: 160 M<sup>2</sup>

1 Reception	4.10m	x	4.10m
2 Dining	3.00m	x	4.10m
3 Terrace 1	4.10m	x	1.60m
4 Kitchen	2.60m	x	3.00m
5 Bathroom	2.50m	x	2.20m
6 Master Bedroom	4.40m	x	3.80m
7 Master Dressing	1.80m	x	1.90m
8 Master Bathroom	1.900m	x	1.90m
9 Bedroom 1	3.80m	x	3.80m
10 Bedroom 2	3.95m	x	4.00m
11 Terrace 2	1.50m	x	1.60m

DISCLAIMER: All materials, dimensions and drawings are approximate. information is subject to change without notice. drawings are not to scale and actual usable floor spaces may vary from the scale floor plans. the developer reserves the right to make revisions to the floor plans



# FLOOR PLAN



## TYPE A

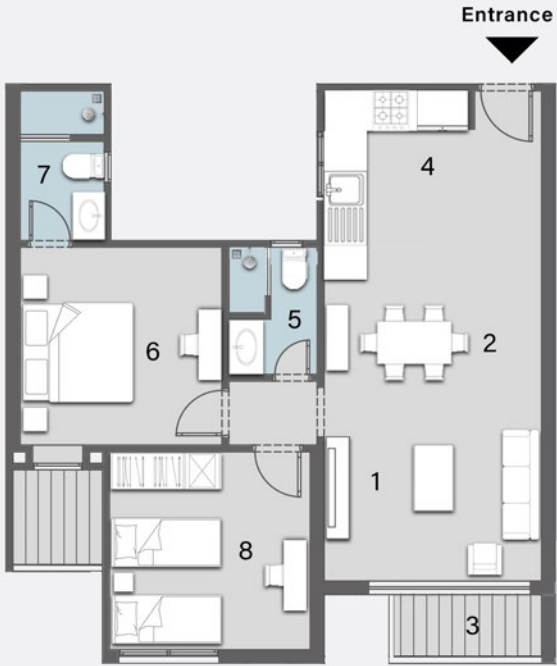
2 BEDROOMS  
TOTAL AREA: 136 M<sup>2</sup>

1 Reception	4.20m	x	4.15m
2 Dining	3.30m	x	4.15m
3 Terrace 1	4.15m	x	1.60m
4 Kitchen	2.70m	x	3.00m
5 Bathroom	2.30m	x	3.00m
6 Master Bedroom	4.00m	x	3.90m
7 Master Dressing	2.10m	x	2.10m
8 Master Bathroom	2.10m	x	1.90m
9 Bedroom 1	3.80m	x	3.80m
10 Terrace 2	2.30m	x	1.60m

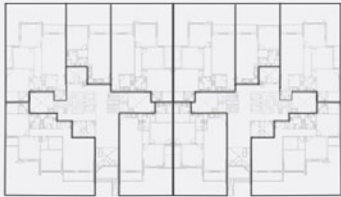
DISCLAIMER: All materials, dimensions and drawings are approximate. information is subject to change without notice. drawings are not to scale and actual usable floor spaces may vary from the scale floor plans. the developer reserves the right to make revisions to the floor plans



# FLOOR PLAN



GROUND FLOOR PLAN



FIRST FLOOR PLAN



TYPICAL FLOOR PLAN



ROOF FLOOR PLAN



## TYPE A

2 BEDROOMS  
TOTAL AREA: 120 M<sup>2</sup>

1 Reception	4.20m	x	3.30m
2 Dining	4.20m	x	2.50m
3 Terrace 1	4.20m	x	1.60m
4 Kitchen	2.70m	x	3.30m
5 Bathroom	2.40m	x	1.90m
6 Master Bedroom	3.80m	x	3.70m
7 Master Bathroom	2.80m	x	1.70m
8 Bedroom 1	3.80m	x	3.90m
9 Terrace 2	2.60m	x	1.80m

DISCLAIMER: All materials, dimensions and drawings are approximate. information is subject to change without notice. drawings are not to scale and actual usable floor spaces may vary from the scale floor plans. the developer reserves the right to make revisions to the floor plans





DISCLAIMER: All materials, dimensions and drawings are approximate. information is subject to change without notice. drawings are not to scale and actual usable floor spaces may vary from the scale floor plans. the developer reserves the right to make revisions to the floor plans

# APARTMENT C

Ground Floor



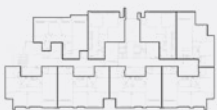
# FLOOR PLAN



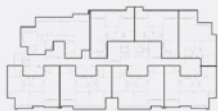
GROUND FLOOR PLAN



FIRST FLOOR PLAN



UPPER FLOOR PLAN



## TYPE C

3 BEDROOMS  
TOTAL AREA: 170 M<sup>2</sup>

1 Toilet	1.90m	x	1.40m
2 Reception	4.10m	x	3.50m
3 Dinning	4.10m	x	3.50m
4 Kitchen	3.60m	x	2.50m
5 Bathroom	2.50m	x	1.90m
6 Bedroom 1	3.80m	x	3.80m
7 Bedroom 2	3.80m	x	3.80m
8Master Bedroom	3.80m	x	3.80m
9 Master Bathroom	2.90m	x	1.70m
10 Master Dressing	2.90m	x	2.10m
11 Terrace 01	3.80m	x	2.10m
11 Terrace 02	4.10m	x	1.60m

16 Garden                      **88 M<sup>2</sup>**

DISCLAMER: All materials, dimensions and drawings are approximate. information is subject to change without notice. drawings are not to scale and actual usable floor spaces may vary from the scale floor plans. the developer reserves the right to make revisions to the floor plans



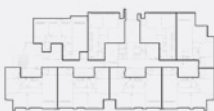
# FLOOR PLAN



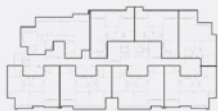
GROUND FLOOR PLAN



FIRST FLOOR PLAN



UPPER FLOOR PLAN



## TYPE C

3 BEDROOMS  
TOTAL AREA: 170 M<sup>2</sup>

1 Toilet	1.90m	x	1.40m
2 Reception	4.10m	x	3.50m
3 Dinning	4.10m	x	3.50m
4 Kitchen	3.60m	x	2.50m
5 Bathroom	2.50m	x	1.90m
6 Bedroom 1	3.80m	x	3.80m
7 Bedroom 2	3.80m	x	3.80m
8Master Bedroom	3.80m	x	3.80m
9 Master Bathroom	2.90m	x	1.70m
10 Master Dressing	2.90m	x	2.10m
11 Terrace 01	3.70m	x	1.70m
11 Terrace 02	4.10m	x	1.60m

16 Garden  
49 M<sup>2</sup>

DISCLAMER: All materials, dimensions and drawings are approximate. information is subject to change without notice. drawings are not to scale and actual usable floor spaces may vary from the scale floor plans. the developer reserves the right to make revisions to the floor plans



# FLOOR PLAN



DISCLAIMER: All materials, dimensions and drawings are approximate. information is subject to change without notice. drawings are not to scale and actual usable floor spaces may vary from the scale floor plans. the developer reserves the right to make revisions to the floor plans

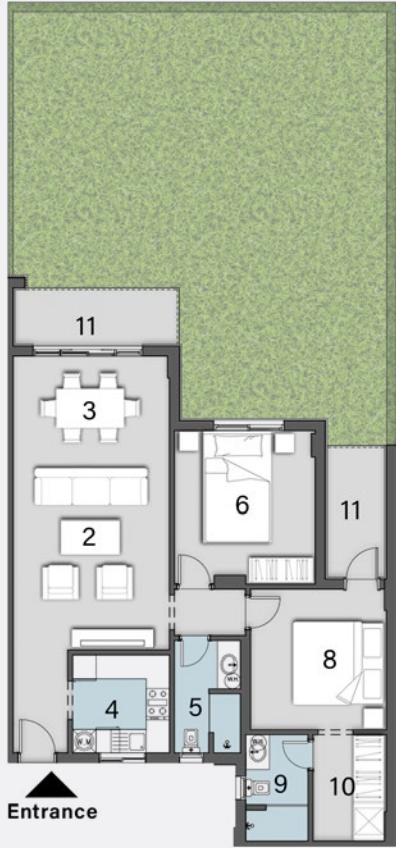
## TYPE C

DUPLEX  
3 BEDROOMS  
TOTAL AREA: 253 M<sup>2</sup>

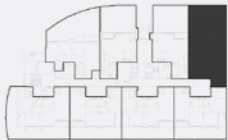
1 Nanny's bathroom	2.00m	x	1.15m
2 Nanny's room	2.10m	x	2.10m
3 Toilet	2.10m	x	1.10m
4 Kitchen	3.50m	x	2.90m
5 Dining	3.00m	x	3.80m
6 Reception	3.80m	x	3.50m
7 Living room	4.80m	x	4.15m
8 Terrace 01	3.80m	x	1.80m
8 Terrace 02	2.50m	x	1.50m
9 Bathrrom	3.10m	x	2.10m
10 Master bathroom	2.50m	x	1.90m
11 Laundry room	2.10m	x	1.30m
12 Master Bedroom	4.50m	x	4.30m
13 Master dressing	2.50m	x	2.00m
14 Dressing room	2.50m	x	2.00m
15 Bedroom 1	3.90m	x	3.65m
16 Bedroom 2	4.10m	x	3.75m
17 Terrace 03	1.60m	x	1.60m
18 Garden	70 M <sup>2</sup>		



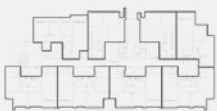
# FLOOR PLAN



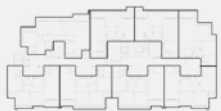
GROUND FLOOR PLAN



FIRST FLOOR PLAN



UPPER FLOOR PLAN



## TYPE C

2 BEDROOMS  
TOTAL AREA: 140 M<sup>2</sup>

2 Reception	4.50m	x	4.10m
3 Dining	4.10m	x	3.40m
4 Kitchen	2.70m	x	2.60m
5 Bathroom	2.80m	x	1.70m
6 Bedroom 1	4.00m	x	3.70m
8 Master Bedroom	3.70m	x	3.70m
9 Master Bathroom	2.80m	x	1.80m
10 Master Dressing	2.80m	x	2.10m
11 Terrace or	4.30m	x	1.70m

16 Garden                      96 M<sup>2</sup>

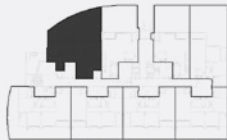
DISCLAIMER: All materials, dimensions and drawings are approximate. information is subject to change without notice. drawings are not to scale and actual usable floor spaces may vary from the scale floor plans. the developer reserves the right to make revisions to the floor plans



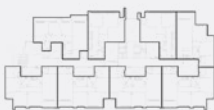
# FLOOR PLAN



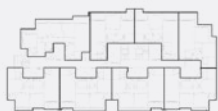
GROUND FLOOR PLAN



FIRST FLOOR PLAN



UPPER FLOOR PLAN



## TYPE C

3 BEDROOMS  
TOTAL AREA: 150 M<sup>2</sup>

1 Toilet	2.65m	x	1.40m
2 Reception	5.00m	x	3.90m
3 Dinning	3.90m	x	2.50m
4 Kitchen	3.15m	x	2.65m
5 Bathroom	2.40m	x	2.10m
6 Bedroom 1	3.70m	x	3.50m
7 Bedroom 2	3.70m	x	3.50m
8 Bedroom 3	4.70m	x	3.50m
11 Terrace	4.30m	x	1.80m

16 Garden **90 M<sup>2</sup>**

DISCLAIMER: All materials, dimensions and drawings are approximate. information is subject to change without notice. drawings are not to scale and actual usable floor spaces may vary from the scale floor plans. the developer reserves the right to make revisions to the floor plans





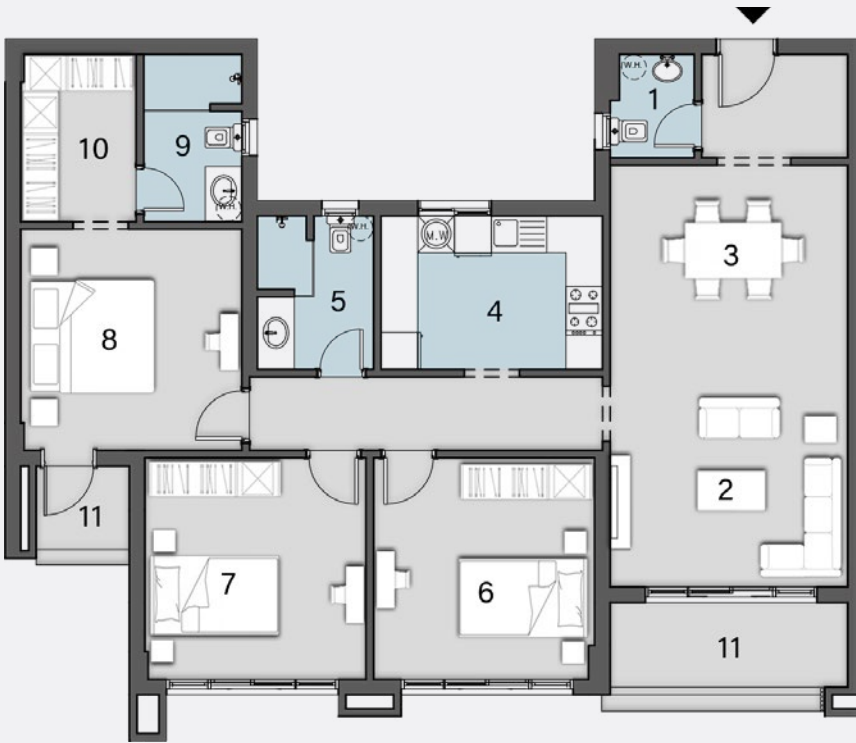
DISCLAIMER: All materials, dimensions and drawings are approximate. information is subject to change without notice. drawings are not to scale and actual usable floor spaces may vary from the scale floor plans. the developer reserves the right to make revisions to the floor plans

# APARTMENT C

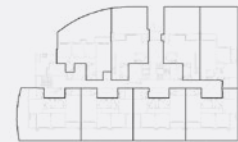
First Floor



# FLOOR PLAN



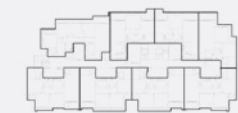
GROUND FLOOR PLAN



FIRST FLOOR PLAN



UPPER FLOOR PLAN



## TYPE C

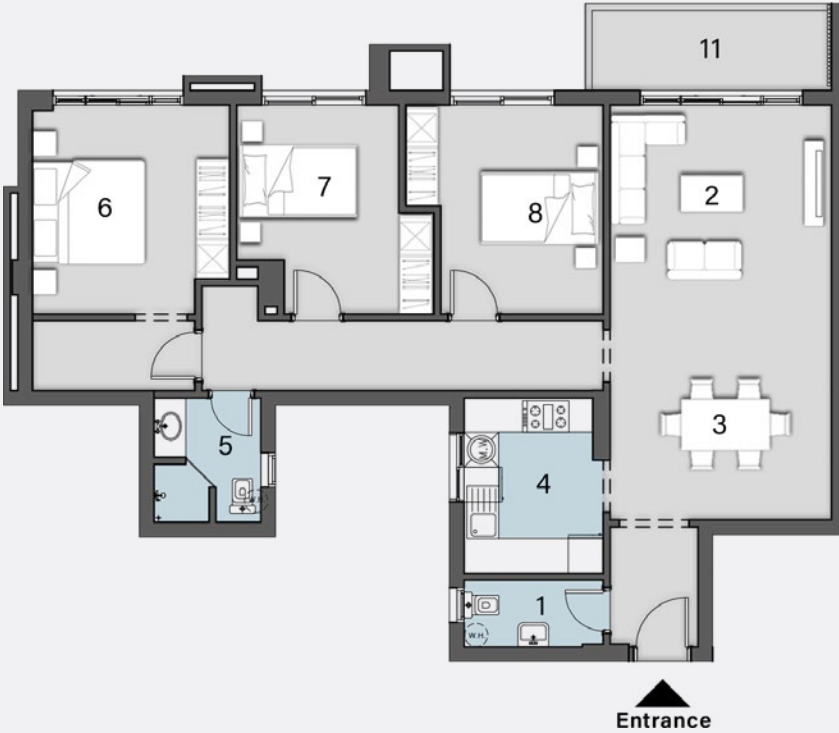
3 BEDROOMS  
TOTAL AREA: 170 M<sup>2</sup>

1 Toilet	1.90m	x	1.40m
2 Reception	4.10m	x	3.50m
3 Dinning	4.10m	x	3.50m
4 Kitchen	3.60m	x	2.50m
5 Bathroom	2.50m	x	1.90m
6 Bedroom 1	3.80m	x	3.80m
7 Bedroom 2	3.80m	x	3.80m
8 Master Bedroom	3.80m	x	3.80m
9 Master Bathroom	2.90m	x	1.70m
10 Master Dressing	2.90m	x	2.10m
11 Terrace 01	1.80m	x	1.60m
11 Terrace 02	4.10m	x	1.60m

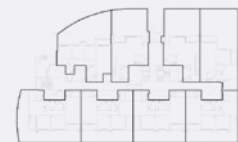
DISCLAIMER: All materials, dimensions and drawings are approximate. information is subject to change without notice. drawings are not to scale and actual usable floor spaces may vary from the scale floor plans. the developer reserves the right to make revisions to the floor plans



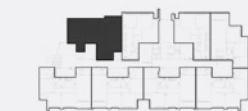
# FLOOR PLAN



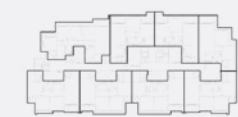
GROUND FLOOR PLAN



FIRST FLOOR PLAN



UPPER FLOOR PLAN



## TYPE C

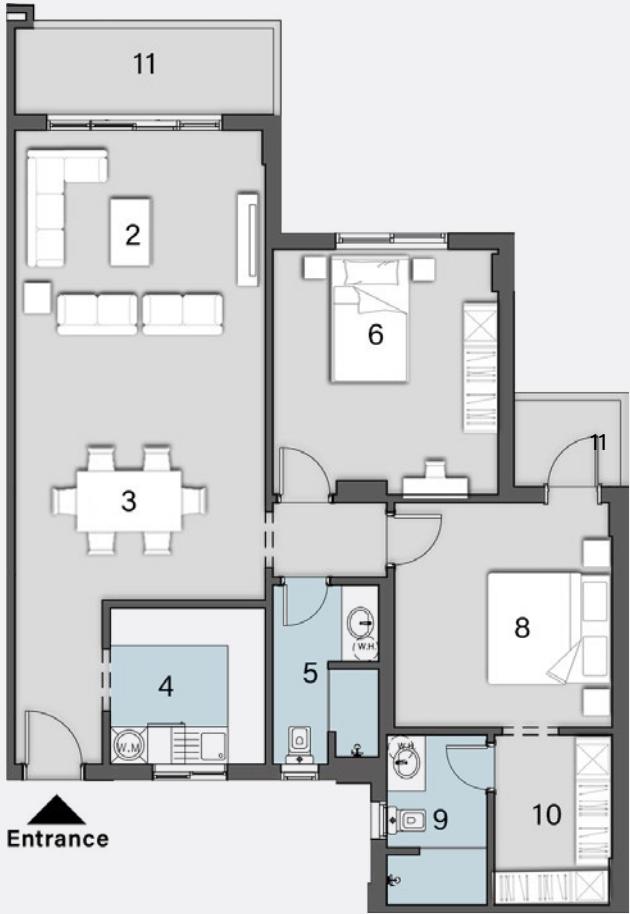
2 BEDROOMS + LIVNG ROOM  
TOTAL AREA: 150 M<sup>2</sup>

1 Toilet	2.60m	x	1.40m
2 Reception	5.00m	x	4.00m
3 Dinning	4.00m	x	2.60m
4 Kitchen	3.10m	x	2.60m
5 Bathroom	2.40m	x	2.00m
6 Master bedroom	4.70m	x	3.50m
7 Bedroom 1	3.70m	x	3.50m
8 Bedroom 2	3.70m	x	3.50m
11 Terrace or	4.20m	x	1.60m

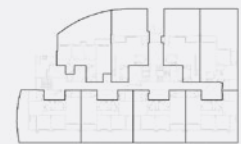
DISCLAIMER: All materials, dimensions and drawings are approximate. information is subject to change without notice. drawings are not to scale and actual usable floor spaces may vary from the scale floor plans. the developer reserves the right to make revisions to the floor plans



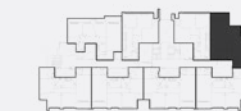
# FLOOR PLAN



GROUND FLOOR PLAN



FIRST FLOOR PLAN



UPPER FLOOR PLAN



## TYPE C

2 BEDROOMS  
TOTAL AREA: 140 M<sup>2</sup>

2 Reception	4.50m	x	4.10m
3 Dinning	4.10m	x	3.40m
4 Kitchen	2.70m	x	2.60m
5 Bathroom	2.80m	x	1.70m
6 Bedroom 1	4.00m	x	3.70m
8Master Bedroom	3.70m	x	3.70m
9 Master Bathroom	2.85m	x	1.80m
10 Master Dressing	2.85m	x	2.00m
11 Terrace 01	4.10m	x	1.60m
11 Terrace 02	1.80m	x	1.60m

DISCLAIMER: All materials, dimensions and drawings are approximate. information is subject to change without notice. drawings are not to scale and actual usable floor spaces may vary from the scale floor plans. the developer reserves the right to make revisions to the floor plans





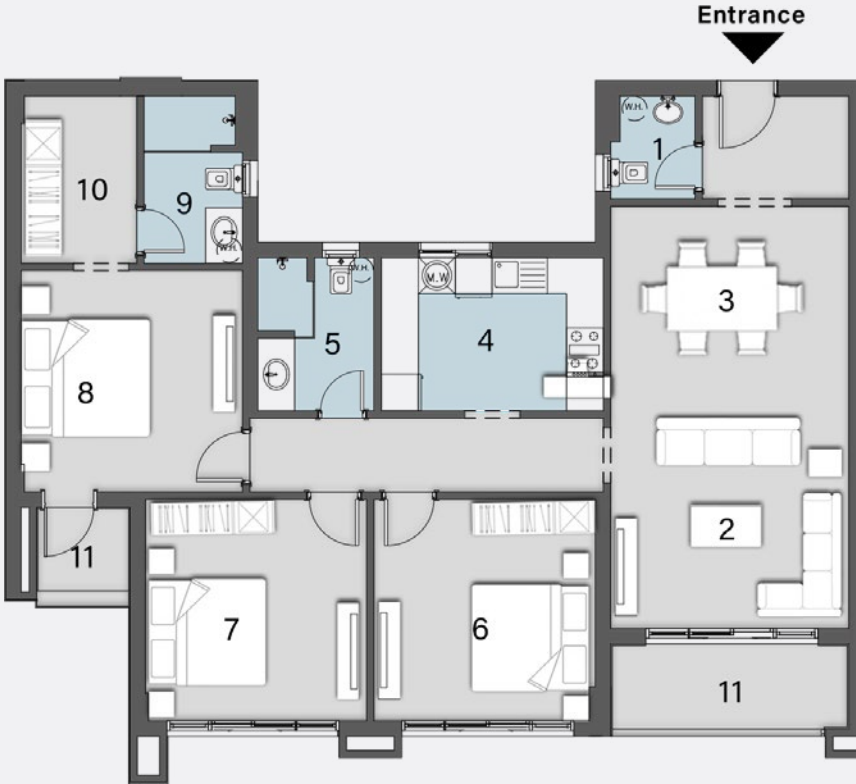
DISCLAIMER: All materials, dimensions and drawings are approximate. information is subject to change without notice. drawings are not to scale and actual usable floor spaces may vary from the scale floor plans. the developer reserves the right to make revisions to the floor plans

# APARTMENT C

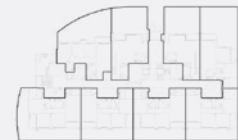
Typical Floor



# FLOOR PLAN



GROUND FLOOR PLAN



FIRST FLOOR PLAN



UPPER FLOOR PLAN



## TYPE C

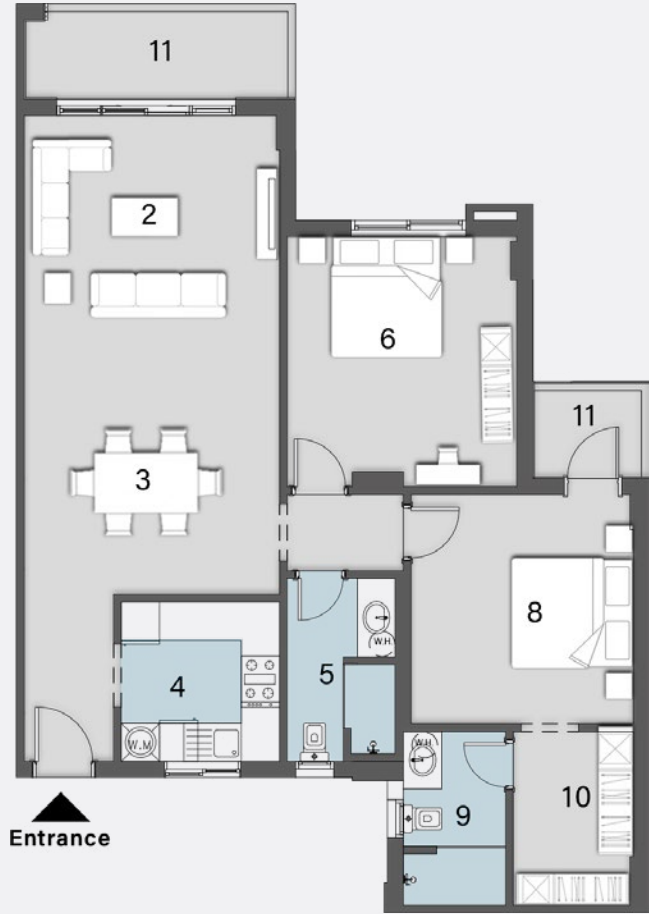
3 BEDROOMS  
TOTAL AREA: 170 M<sup>2</sup>

1 Toilet	1.90m	x	1.40m
2 Reception	4.10m	x	3.50m
3 Dinning	4.10m	x	3.50m
4 Kitchen	3.60m	x	2.50m
5 Bathroom	2.50m	x	1.90m
6 Bedroom 1	3.80m	x	3.80m
7 Bedroom 2	3.80m	x	3.80m
8 Master Bedroom	3.80m	x	3.80m
9 Master Bathroom	2.90m	x	1.70m
10 Master Dressing	2.90m	x	2.10m
11 Terrace 01	1.80m	x	1.60m
11 Terrace 02	4.10m	x	1.60m

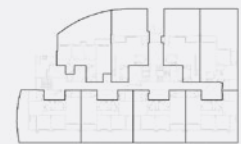
DISCLAIMER: All materials, dimensions and drawings are approximate. information is subject to change without notice. drawings are not to scale and actual usable floor spaces may vary from the scale floor plans. the developer reserves the right to make revisions to the floor plans



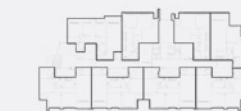
# FLOOR PLAN



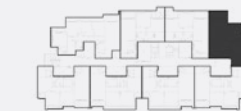
GROUND FLOOR PLAN



FIRST FLOOR PLAN



UPPER FLOOR PLAN



## TYPE C

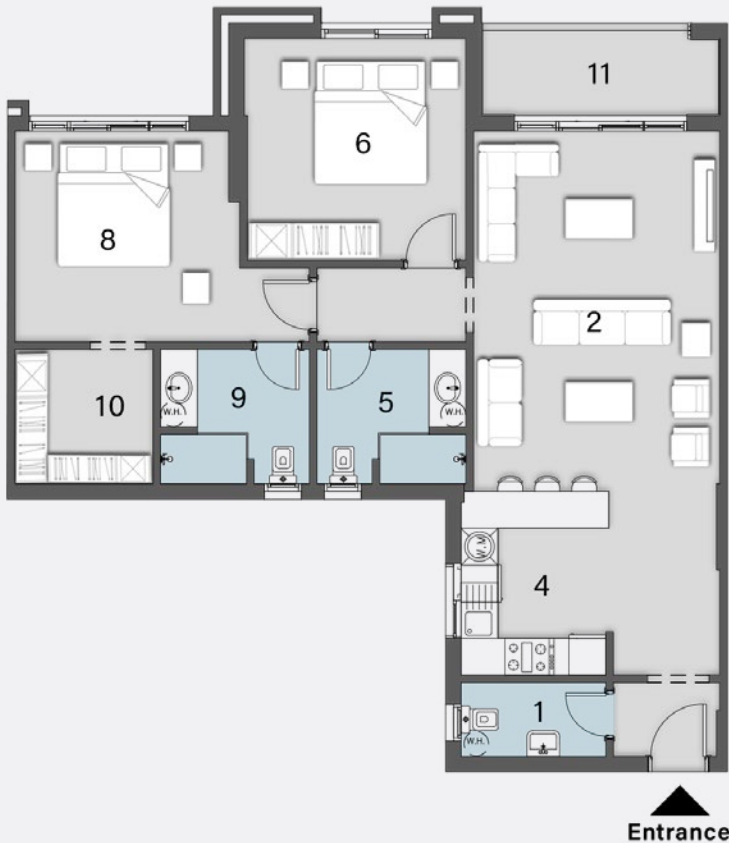
2 BEDROOMS  
TOTAL AREA: 140 M<sup>2</sup>

2 Reception	4.50m	x	4.10m
3 Dinning	4.10m	x	3.40m
4 Kitchen	2.70m	x	2.60m
5 Bathroom	2.80m	x	1.70m
6 Bedroom 1	4.00m	x	3.70m
8Master Bedroom	3.70m	x	3.70m
9 Master Bathroom	2.85m	x	1.80m
10 Master Dressing	2.85m	x	2.10m
11 Terrace 01	4.10m	x	1.60m
11 Terrace 02	1.80m	x	1.60m

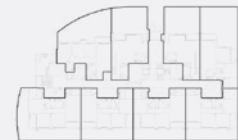
DISCLAIMER: All materials, dimensions and drawings are approximate. information is subject to change without notice. drawings are not to scale and actual usable floor spaces may vary from the scale floor plans. the developer reserves the right to make revisions to the floor plans



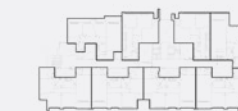
# FLOOR PLAN



GROUND FLOOR PLAN



FIRST FLOOR PLAN



UPPER FLOOR PLAN



## TYPE C

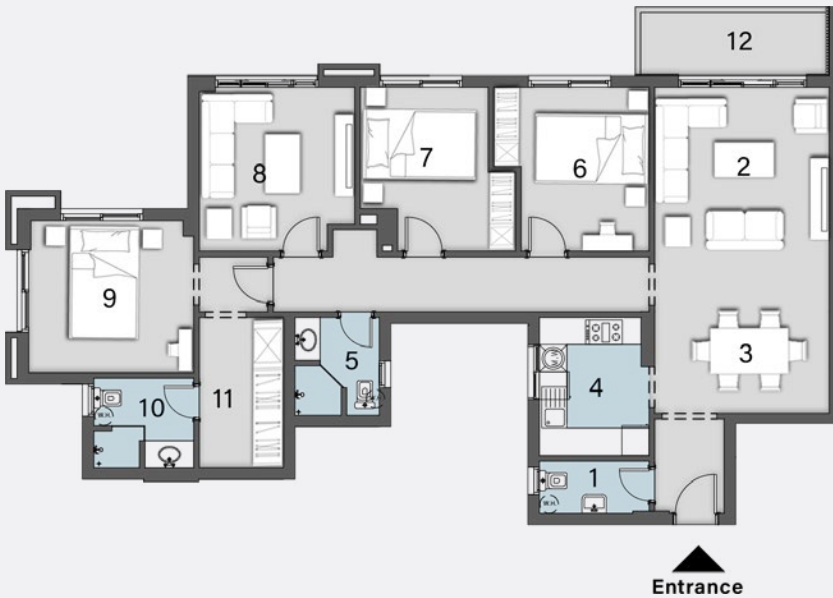
2 BEDROOMS  
TOTAL AREA: 140 M<sup>2</sup>

1 Toilet	2.60m	x	1.50m
2 Reception&Dinning	6.00m	x	4.10m
4 Kitchen	3.10m	x	2.60m
5 Bathroom	2.50m	x	2.30m
6 Bedroom 1	3.80m	x	3.80m
8 Master Bedroom	4.90m	x	3.60m
9 Master Bathroom	2.50m	x	2.40m
10 Master Dressing	2.40m	x	2.40m
11 Terrace or	4.10m	x	1.60m

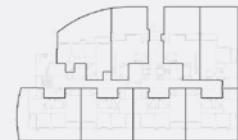
DISCLAMER: All materials, dimensions and drawings are approximate. information is subject to change without notice. drawings are not to scale and actual usable floor spaces may vary from the scale floor plans. the developer reserves the right to make revisions to the floor plans



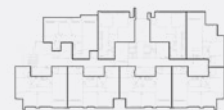
# FLOOR PLAN



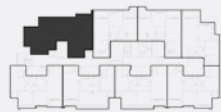
GROUND FLOOR PLAN



FIRST FLOOR PLAN



UPPER FLOOR PLAN



## TYPE C

3 BEDROOMS + LIVING ROOM  
TOTAL AREA: 186 M<sup>2</sup>

1 Toilet	2.60m	x	1.40m
2 Reception	5.00m	x	3.90m
3 Dinning	3.90m	x	2.60m
4 Kitchen	3.10m	x	2.60m
5 Bathroom	2.50m	x	1.90m
6 Bedroom 1	3.70m	x	3.50m
7 Bedroom 2	3.70m	x	3.50m
8 Living room	3.70m	x	3.50m
9 Master Bedroom	3.80m	x	3.80m
10 Mater Bathroom	2.40m	x	2.20m
11 Master dressing room	3.50m	x	2.10m
12 Terrace or	4.20m	x	1.50m

DISCLAIMER: All materials, dimensions and drawings are approximate. information is subject to change without notice. drawings are not to scale and actual usable floor spaces may vary from the scale floor plans. the developer reserves the right to make revisions to the floor plans



 times developments

Plot 13, 5th settlement, New Cairo, Egypt

 times.developments



[www.times.com.eg](http://www.times.com.eg)

19164

[info@times.com.eg](mailto:info@times.com.eg)