



Parkside

EL-SHOROUK CITY



A NEW PHASE IN MAADI VIEWS

arkside



Ahmed El Tayebi

About El Tayebi

The Developer

Ahmed El Tayebi is a businessman with an extensive and diverse career extending over a period of 30 years in various sectors across Egypt, namely tourism and hospitality, retail and real estate, successfully garnering a solid market reputation in each field.

In 2006, Ahmed El Tayebi embarked on a new venture with the establishment of "El Tayebi Developments," a privately-owned corporate entity that redefined high-end real estate standards in Egypt. Focused on delivering top-notch quality and innovative designs, the company targeted expat communities in various locations including Maadi, New Cairo, and Alexandria.



30 YEARS OF EXCELLENCE, STILL GOING STRONG A LEGACY OF STRENGTH
BUILDING TOMORROW, TODAY

El-Tayebi Projects

Maadi Signature Buildings

Residential Complex - Maadi



West-Golf Compounds

Residential Projects - New Cairo



TOWNSQUARE
RETAIL - COMMERCIAL - ADMINISTRATIVE
COMPLEX

Mixed use complex – New Cairo





EVERY SEASON BRINGS A SENSE OF BELONGING

About Parkside

About Maadi Views

One of the oldest construction companies in Egypt established in 1904, it is one of the subsidiaries of the Holding Company for Construction and Development affiliated with the Public Enterprise Sector Ministry.

Maadi Company is the founder and developer of Maadi district in Cairo, one of the most prestigious districts in Egypt, in addition to Zahraa Al Maadi, Deg la Al-Maadi, and New Maadi, these are existing projects that witness the leadership and superiority of Maadi Development and construction Company and predict the high-end and international levels that all its upcoming projects will have.

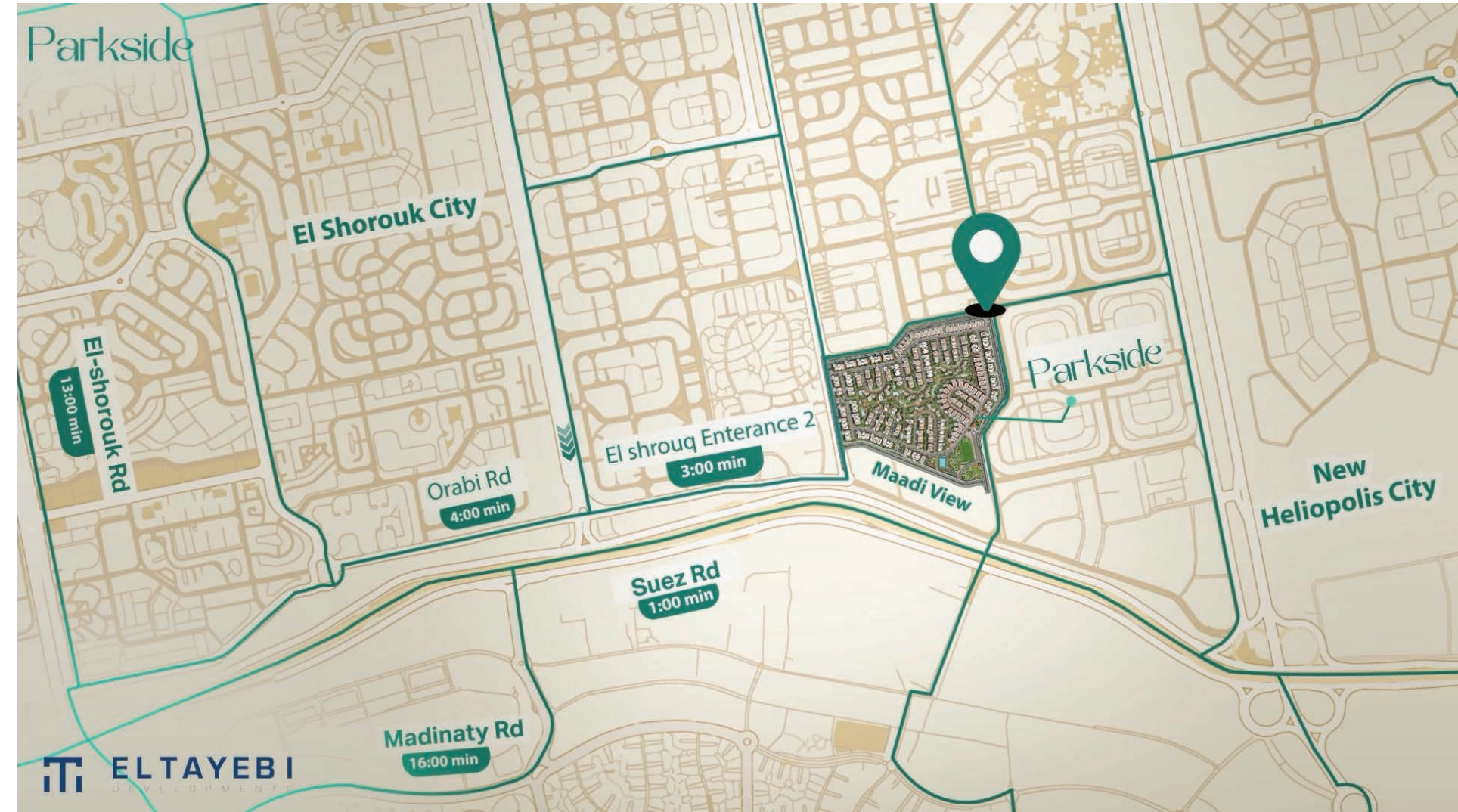


About Parkside

Parkside is a residential project in El Shorouk city inspired by the charm of Maadi district. It offers a blend of Maadi's distinctive features and modern amenities. The location on Suez Road, facing Madinaty, provides a quiet community with proximity to key facilities, the new capital, and Cairo airport.



LOCATION



Parkside



Entrance (4)

Services

Compound offers a wide range of services and facilities designed to provide residents with a comprehensive and comfortable living experience. From modern amenities to recreational spaces, Compound aims to create a convenient and enjoyable environment where residents can live, work, and play without having to leave the premises. With a focus on convenience and quality of life, Compound strives to meet the diverse needs of its residents and enhance their overall living experience.

USPs



Bicycles walking lanes



Car parking areas



Full maintenance



Security, 24/7



Mosque



Sports house



Shopping mall



Yoga zone



Kids area



Swimming pools



Commercial district

Parkside

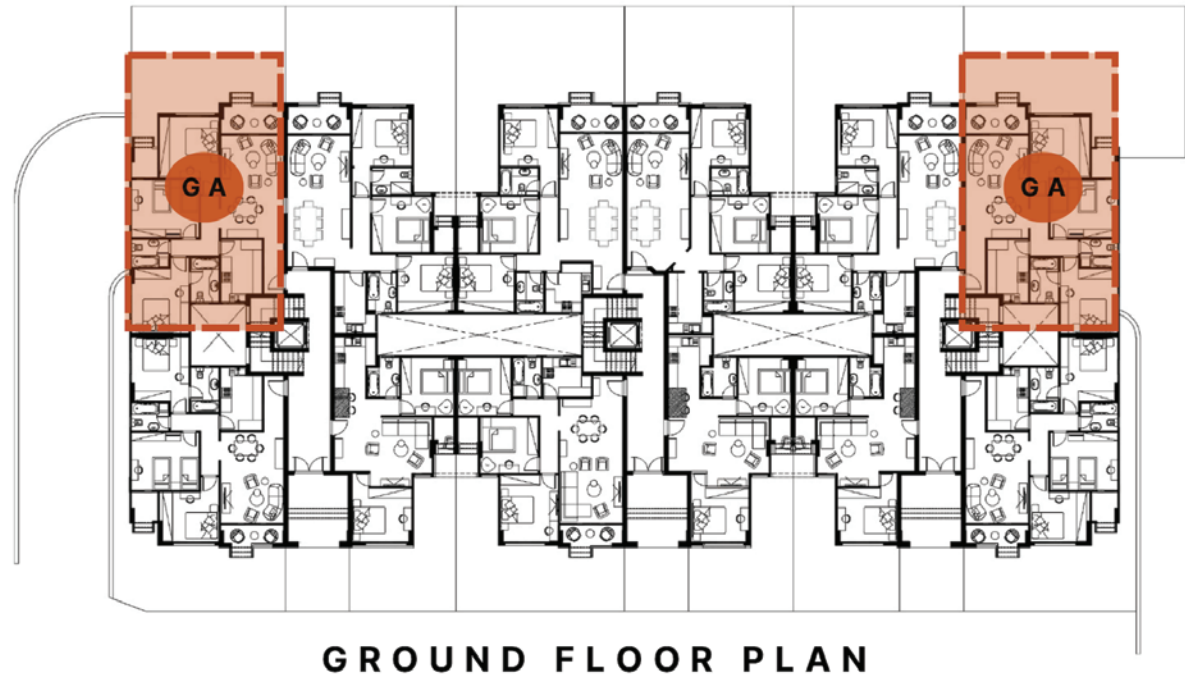
Floor Plans

Parkside Apartments

Ground floor

3 Bedrooms

Gross Area:
122.4 M² - 138 M²



Parkside

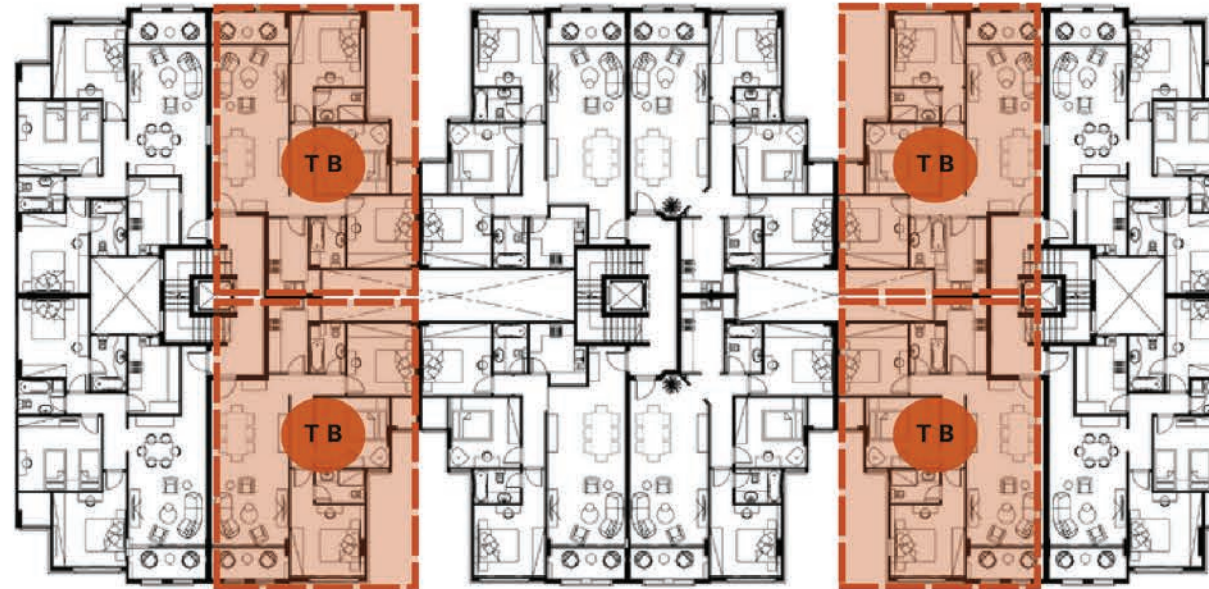
Floor Plans

Parkside Apartments

Typical

3 Bedrooms

Gross Area:
133.2 M² - 138 M²



TYPICAL FLOOR PLAN

Parkside

Parkside

EL-SHOROUK CITY



16170



/ El Tayebi Developments



www.eltayebi.com



S1B - 3rd Floor, Downtown Kattamya,
New Cairo.



ELTAYEBI
DEVELOPMENTS